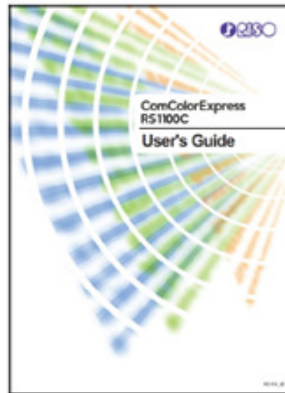




ON-SITE QUICK SETUP

RS1100C ON-SITE CONFIGURATION

Please refer to the User's Guide as noted in this Quick Setup.



2 INSTALL USER SOFTWARE ON USER'S PC

- STEP 1:** Go to a **user's PC** that will print to the RS1100C, and insert the User Software DVD. **DO NOT INSERT IT INTO THE RS1100C!**
- STEP 2:** Open the DVD.
- STEP 3:** Open the Installer folder.
- STEP 4:** Double click RS1100C_Software_Package to run the wizard setup.
- STEP 5:** Click **Next** to continue.
- STEP 6:** Click **Agree**.
- STEP 7:** Select components to install: check Printer Driver & RISO Management Tool and click **Next**.
- STEP 8:** Choose destination folder, Click **Next** again.
- STEP 9:** Click **Install**.
- STEP 10:** Once installation is complete, **uncheck the box Run PrinterInstaller** and click Finish. (*User's Guide p.13*)

1 CONFIGURE THE FW PRINTER

STEP 1: Please ensure that the FW printer firmware is at version 3.1.006 or higher. (Firmware is available on RISO website)

STEP 2

Power ON the FW printer and login as an Administrator. Select <Power Saving Setting>

STEP 3

Set Auto Backlight OFF to ON. Set Power Consumption (In Sleep) should be set to Standard.

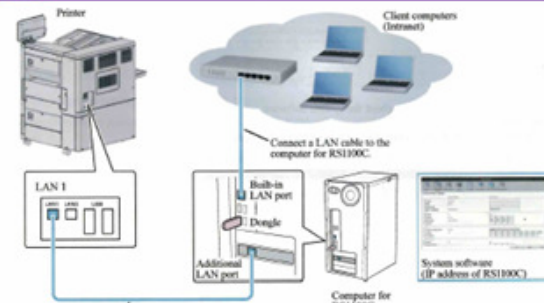
STEP 4

Perform test mode: 316001 <External Controller Connect Select> and set it to 1.

STEP 5

Perform test mode: 316002 <External Controller Type Select> and set it to 2.

3 CONNECT THE NETWORK CABLES ACCORDING TO THE PICTURE SHOWN BELOW



Note: the Dongle is already pre-installed inside the machine.
 Plug crossover cable to printer port, straight-through RJ45 cable for host, and power cord for RS1100C. Plug Monitor, Keyboard and Mouse into the RS1100C.



4

POWER ON THE RS1100C



Push the power button **ONCE** to turn on the RS1100C ...

This is a Computer Interface only.
Do not install software on it!

5

RIP Networking Setup

1 When RIP loads, Login as Admin.
Name: Admin
Password: 0000

2 Select "Rip" tab and click on "RIP Details..."
Click on the Communications button and setup the Network as defined by the Customer (Static IP or DHCP). Reboot RIP.

After restart

RIP name	<input type="text"/>	If Customer has multiple RIPs, you will want to give each a unique RIP name.
Domain	<input type="text"/>	
EtherTalk zone	<input type="text" value="*"/>	
NetBIOS workgroup	<input type="text" value="WORKGROUP"/>	
IPv4		
Use DHCP	<input type="checkbox"/>	
IP address	<input type="text" value="0"/> <input type="text" value="0"/> <input type="text" value="0"/> <input type="text" value="0"/>	
Subnet mask	<input type="text" value="255"/> <input type="text" value="255"/> <input type="text" value="255"/> <input type="text" value="0"/>	
IP gateway	<input type="text"/> <input type="text"/> <input type="text"/> <input type="text"/>	
IPv6		
IP address configuration	<input type="text" value="Manual"/>	
IP address	<input type="text" value="0"/> <input type="text" value="0"/> <input type="text" value="0"/> <input type="text" value="0"/> <input type="text" value="0"/> <input type="text" value="0"/> <input type="text" value="0"/> <input type="text" value="0"/> <input type="text" value="0"/> <input type="text" value="64"/>	
IPv6 Gateway	<input type="text" value="0"/> <input type="text" value="0"/> <input type="text" value="0"/> <input type="text" value="0"/> <input type="text" value="0"/> <input type="text" value="0"/> <input type="text" value="0"/> <input type="text" value="0"/>	
Name server		
Use DHCP	<input type="checkbox"/>	
IP Address (IPv4)	<input type="text"/> <input type="text"/> <input type="text"/> <input type="text"/>	

3 Open a Web Browser and verify the Customer PC can access the RIP remotely. <http://RS1100C-G> (computer name can be found in previous step)

4 Install Printer on Customer PC and/or setup Printer Queues as needed. Service only supports Windows® driver installation.

If Virtual Machine is not setup as full screen, click on "View" and select "Full Screen."

