



Shipping & Mailing  
Printing

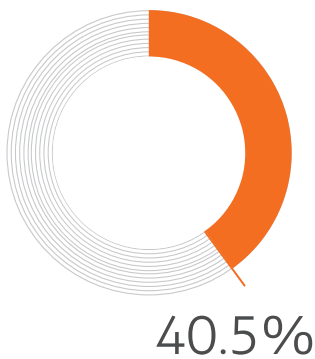
IntelliJet 20® printing system

# Make your move to colour.

High-speed colour inkjet printing



# Gain a competitive advantage.



40.5% of consumers would like their statements easier to understand, according to a consumer study by Pitney Bowes.

Ready to make more impact? Transform your business and give it a competitive advantage with industry leading print quality.

The IntelliJet 20® printing system produces highly personalised transactional mailings, at up to 152 metres (500 feet) feet per minute with up to 2400 nozzles per inch (npi) native resolution in Quality Mode or 1200 npi native resolution Productivity Mode. It's designed to help you achieve operational excellence while producing higher value communications.

A flexible and upgradeable system, the IntelliJet 20 supports a wide range of paper substrates so you can print more types of applications on a single platform. It replaces and outperforms toner-based monochrome and colour systems, enabling you to increase output within the same floor space.

## Print more, in less time.

Tight deadlines? No problem. This 520.7mm (20.5-inch) web accommodates 2-up format at up to 2,053 A4 impressions per minute in Productivity Mode.

- Respond to high-volume print needs quickly
- Print up to 152 metres (500 feet) per minute Productivity Mode or 76 metres (250 feet) per minute in High Quality Mode
- Process complex transactional jobs at full print speed
- Produce up to 60 million A4-sized impressions per month

## Keep costs low, every day.

You'll gain more control over operating expenses and consumable costs.

- Replace multiple monochrome printers, saving labour, space and service costs
- Integrate with your current pre- and post-processing devices
- Print on a wide range (40-215 gsm) of standard offset media instead of expensive coated stocks
- Eliminate the cost, storage and waste associated with pre-printed forms and envelopes
- Co-mingle smaller jobs and print in presort order to save on postage





## Do it all, effortlessly.

Produce high-value, high-volume custom communications with accuracy and precision.

- Process and transform all common Page Description Languages (PDLs)
- Migrate and merge your existing applications
- Produce financial documents with secure, in-line MICR printing
- Optimise output for high-speed inserting and mailing.

## Colour, without compromise.

This IntelliJet system provides the foundation for an integrated White Paper Factory approach. Create mail that's compelling, targeted and accurate using 100 percent variable data colour print. You can add cross-sell offers, full-colour graphics and clear payment details on every statement to grow revenues and customer satisfaction.

## Create greater impact.

The crisp, high-quality output rivals offset printing, with leading inkjet technology and pigment inks that provide a wide colour gamut and durable output across a variety of substrates.

- Produce high impact communications with up to 2400 nozzles per inch native resolution with High Definition Nozzle Architecture (HDNA)
- Nozzle redundancy maintains high print quality throughout long print runs
- True black ink provides superior optical density
- Durable output stands up to folding and inserting with no loss of quality

# Perform brilliantly.

Print 100%  
variable content  
with precision

Proven, flexible and upgradeable  
platform allows you to invest  
with confidence

Produce MICR print  
in-line with integrated  
imaging solution



Configure pre/post  
processing options  
to match mail  
finishing inputs

Process a range of PDLs  
including Metacode,  
LCDS, AFP, AFPDS, PS,  
PDF and PCL.

Excellent print quality  
with up to 2400 nozzles per  
inch native resolution High  
Definition Nozzle Architecture

Based on the  
HP PageWide Web  
Press T-200 Series

## Maximise productivity and profits.

The IntelliJet 20® printing system combines proven HP inkjet technology and Pitney Bowes Production Intelligence® software, hardware and support services to streamline and improve your entire print and mail process which can include:

- Output management and ADF software
- Printing systems
- High-speed inserting
- High-speed sorting
- Mail tracking

## Services that maximise production performance.

Achieve your goals with end-to-end process alignment.

- Quickly become productive with best-in-class installation and integration
- Optimise equipment and workflows to best process your jobs and applications
- Maximise performance with the right repair services, technical support and parts strategies

Fast and flexible. Print  
up to 152 metres  
(500 feet) per minute

Accept a wide range  
of paper including  
plain uncoated stocks.  
Optional in-line  
priming technology

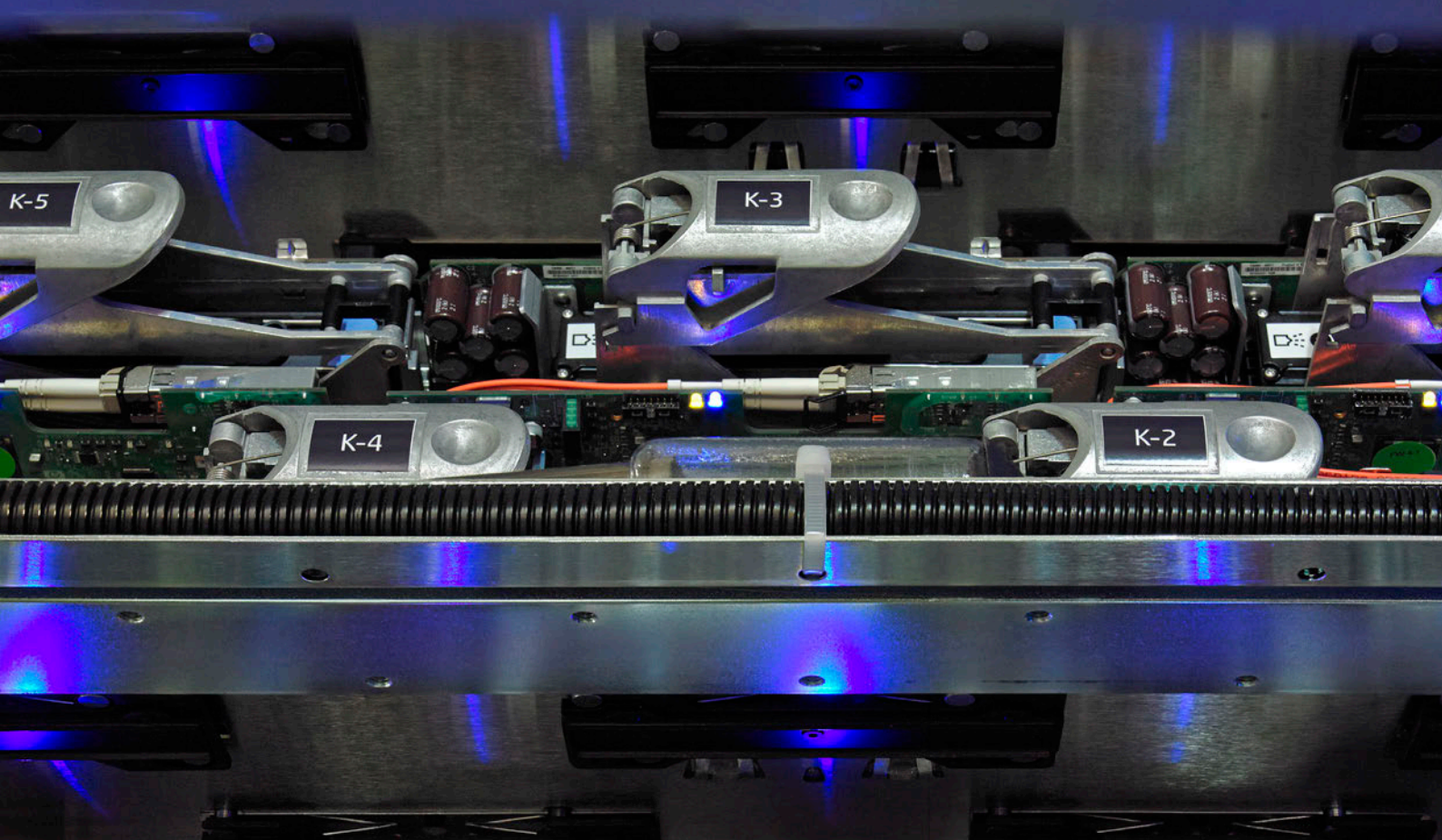
Easily migrate  
applications using a  
520.7mm web width







High-quality inkjet printing that's highly personalised, productive and profitable.



	IntelliJet 20® printing system	IntelliJet 20® HD printing system
Throughput	Up to 122 metres (400 feet) per minute colour or monochrome	Up to 152 metres (500 feet) per minute colour or monochrome in Productivity Mode Up to 76 metres (250 feet) per minute colour or monochrome in Quality Mode
Impressions per minute	Up to 1,642 A4 impressions per minute, 2-up format	Up to 2,053 A4 impressions per minute, 2-up format in Productivity Mode Up to 1,026 A4 impressions per minute, 2-up format in Quality Mode
Resolution	1200 nozzles per inch native resolution standard, upgradable to High Definition Nozzle Architecture	1200 nozzles per inch native resolution Productivity Mode 2400 nozzles per inch native resolution Quality Mode
Media	Handling: tight web continuous roll feed Types: wide range of standard uncoated offset media and inkjet-optimized coated media Width: up to 520.7mm Weight: 60-215 gms (16-56 lb bond)	Handling: tight web continuous roll feed Types: wide range of standard uncoated offset media and inkjet-optimized coated media Width: up to 520.7mm Weight: 40-215 gms (16-56 lb bond)
Printing	Technology: HP Thermal Inkjet Ink type: water-based HP pigment inks and Bonding Agent Ink colors: CMYK, optional MICR Printable width: up to 520.7mm Duty cycle: up to 50 million A4 impressions per month	Technology: HP Thermal Inkjet Ink type: water-based HP pigment inks and Bonding Agent Ink colors: CMYK Printable width: up to 520.7mm Duty cycle: up to 60 million A4 impressions per month
Input file formats	Metacode, LCDS, AFP, AFPDS, PS, PDF and PCL	
Print controller	IntelliJet® Print Process Manager	
Dimensions (H x L x W)	Straight line configuration: 2.7m x 7.8m x 3.0m (8 ft-11 in x 25 ft-7 in x 9 ft-9 in) Actual dimensions are dependent upon final system design and configuration	
Operating environment	Temperature range: 15-30° C / Humidity: optimal 40-60% RH; maximum 15-80% RH (non-condensing)	
Power requirements	Electrical voltage: 400V to 480V, 3 phase / Power consumption (idle): 6 kVA Power consumption (typical production environment): 20 kVA	
Optional accessories	HP QuickVision Quality Image Check, Colour Calibration Kit, Inline Priming System, Moisturiser System	

**United Kingdom**

Building 5, Trident Place  
Hatfield Business Park  
Mosquito Way  
Hatfield  
Hertfordshire AL10 9UJ  
[ukenquiries@pb.com](mailto:ukenquiries@pb.com)

For more information, call 08444 992 992  
or visit us online: [pitneybowes.com/uk](http://pitneybowes.com/uk)