



Mailing
Inserting

Relay® 6000 inserter

Precision and performance in technology you can trust.



Simplify complex mail

The Relay® 6000 inserting system is designed on a fast, reliable folding and inserting platform that helps ensure that the right contents get into the right envelope.

Improve productivity without risking precision.

Mail continues to be critical to the success of your company, from sending monthly bills to existing customers to building your business via direct mail. Achieving accuracy, security and speed isn't merely important. It's necessary. Until now, it's been difficult to identify an ideal solution that can keep your mailing process precise and accurate.

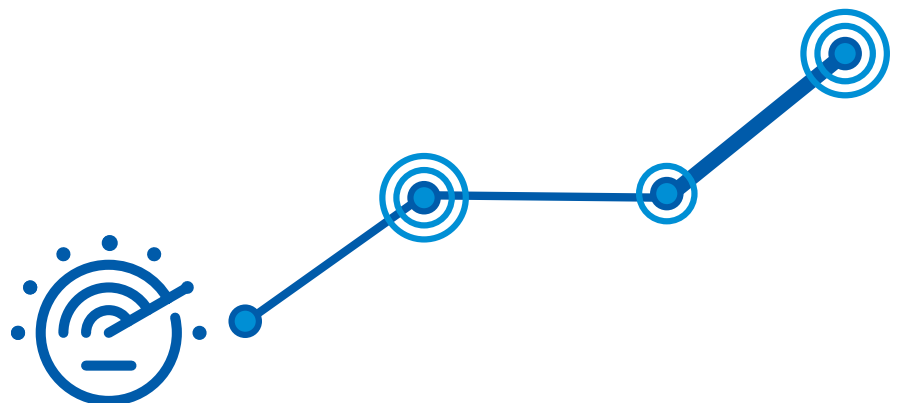
Keep your mail moving with outstanding flexibility and efficiency.

The Relay 6000 inserter enables fast, consistent production of both simple and complex jobs. The proven reliable chassis uses the same straight paper path design found on our top of the line inserters. The Relay 6000 also gives you the flexibility to handle folded or unfolded sheets, without any manual changeover. That saves you time and effort.

The Relay 6000 does the work... so you don't have to.

Set and start your mail runs in seconds with the intuitive user interface. With the ability to program your jobs with real names — not just numbers — you can switch settings such as form letters to single page letters to variable page bills with a simple press of a button. The simple-to-follow onscreen user guides walk you through the loading of paper, inserts, and envelopes. With guesswork eliminated, the Relay 6000 is easy enough to use for even infrequent operators.

- Finish up to 4,300 envelopes per hour.
- Process monthly volumes up to 120,000 finished envelopes
- Multiple output options to suit your workflow.
- Optional ergonomic height-adjustable table.



Reliable and flexible design keeps your documents and envelopes moving quickly.

Relay® 6000 features

Envelope feeder

Easily switch between C4 and C5/DL envelopes, load on-the-fly without stopping the job.



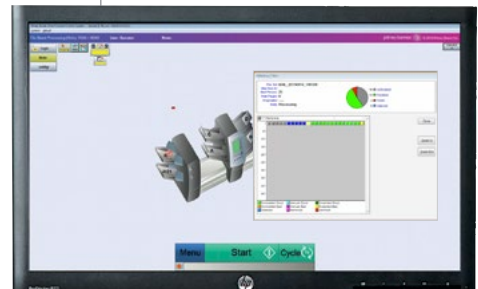
Control panel

Provides straightforward job creation and selection, with job status display all in one convenient user interface.



File-based processing

Mail piece integrity option that provides total control, visibility and reporting for your mail production process.



High-capacity sheet feeder

Each high-capacity sheet feeder has two 1,000-sheet capacity feeder trays (2,000 total) to keep your production moving.



Tower feeders

One dedicated outer envelope feeder for DL, C5 or C4 envelopes combined with 3 flexible feeders for either inserts or sheets.

Folder

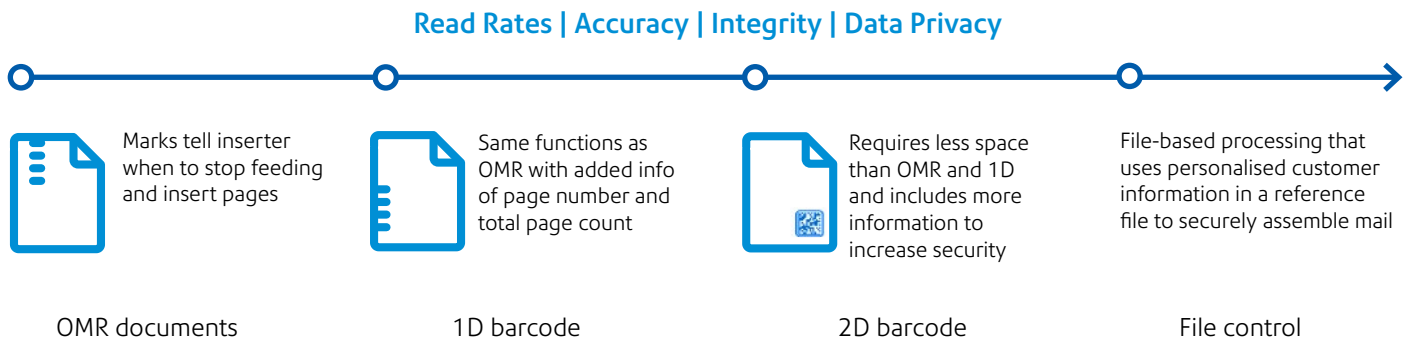
Folds collated sheets into C-fold, Z-fold, Single-Fold, or Double-Fold. No fold for C4 envelopes.

Reverse accumulator

Ensures the address shows properly in the window of an envelope whether the address is on the top, middle, or bottom of the page.

Your production is only as good as the accuracy it provides.

Information privacy, marketing campaigns, incoming revenue, and customer retention, all rely on superior mail accuracy when a customer opens it. The Relay® 6000 includes flexible barcode scanning options such as OMR, 1D and 2D. This technology lets you accurately assemble your variable page mail, thus eliminating the need to manually sort documents by page count.



File control (file-based processing)

The Relay 6000 goes beyond barcode scanning. Now, Pitney Bowes offers our world-class file-based processing capabilities in a mid-

volume inserting system. File-based processing checks and cross-checks every page in your mailing. This gives you total visibility to each mail piece

and helps prove that you've safeguarded the private information that your customers entrust you with.

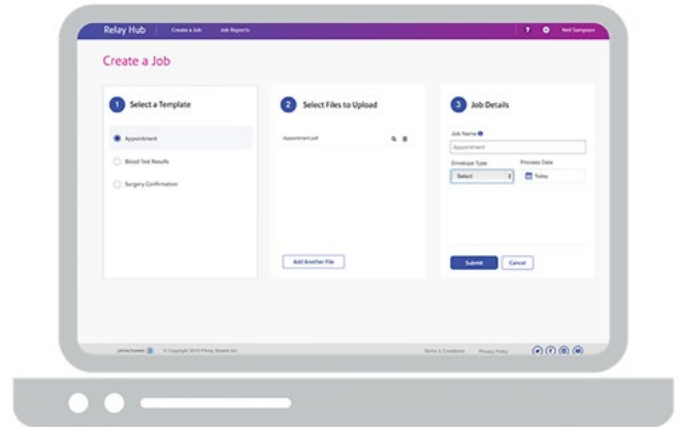


The reference file is used to control and constantly verify pages are accurately folded and inserted.

Relay[®] hub from the Pitney Bowes Commerce Cloud

Protect private customer data the easy way.

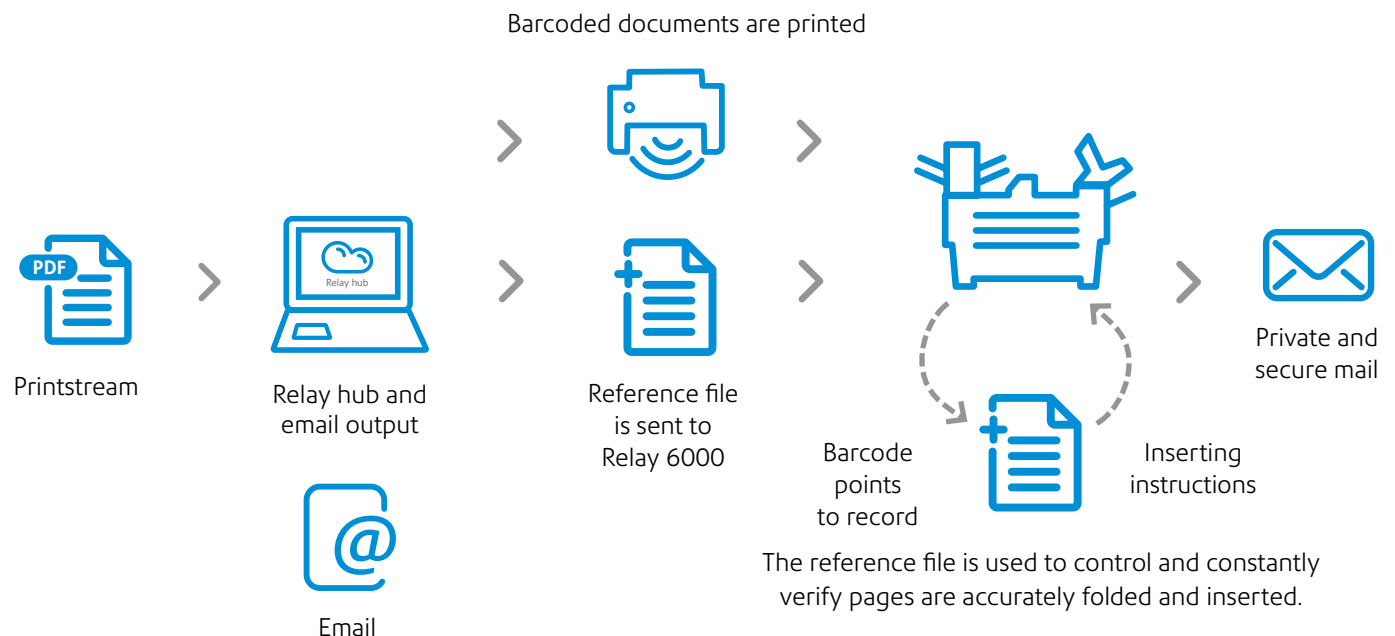
The Relay hub leverages the simplicity and speed of SaaS to help you add security to your mail and workflow, without interrupting your current systems.



The Relay hub is a powerful, simple, secure cloud solution that works with your existing print streams to add scan codes to existing documents. It

also helps you transition documents to email when you're ready to send. For customers wanting more digital communication options, the Relay

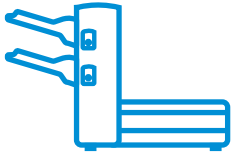


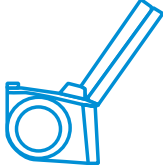
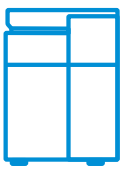
hub can seamlessly shift print streams used for physical mail and adapt it to digital channels. This includes email sending and archiving.



We're here to help. At Pitney Bowes, we believe that every document should be treated with the same level of scrutiny, regardless if you're sending communications using physical or digital mail, producing them in-house or outsourcing your production.

Specifications	
Throughput	4,300 per hour
Monthly capacity	120,000
Maximum number of feeders	7 (4 High-capacity Sheet Feeders + 3 Sheet/Insert feeders)
Fold options	C, Z, Half, Double, No Fold
Integrity options	OMR, 1D, 2D, exit scanning, file-based processing
Programmable jobs	24
Tower sheet trays	
Capacity per feeder	350 sheets
Paper sizes	Minimum 127 mm width x 135 mm length Maximum 250 mm width x 356 mm length
Paper weights	Minimum 60 gsm to 175 gsm
High-capacity sheet feeder	
Capacity per feeder	Optional (up to 2 per base system) 2,000 sheets (1,000 per feeder tray)
Paper sizes	Minimum 203 mm width x 232 mm length Maximum 216 mm width x 297 mm length
Paper weights	Minimum 75 gsm to 90 gsm
Insert feeder	
Capacity	350 inserts
Sizes	Minimum 72 mm height x 127 mm length Maximum 153 mm height x 250 mm length
Thickness, compressed	Minimum 0.076 mm to maximum 2.54 mm
Envelope feeder	
Capacity	250 Letter (100 Flat)
Letter-sized	Minimum 89 mm height x 162 mm length Maximum 165 mm height x 266 mm length
Flat-sized	Minimum 162 mm height x 165 mm length Maximum 266 mm height x 330 mm length
Envelope weights	Letter: Minimum 70 gsm to maximum 90 gsm Flats: Minimum 80 gsm to maximum 90 gsm
Physical dimensions (includes tower feeder trays)	
Length	153.6 cm base, 227.3 cm overall length (base unit fits on 152.4 cm table)
Depth	57.9 cm
Height	78.7 cm
Weight	148 kg

Accessory physical specifications

	High capacity sheet feeder			Horizontal belt stacker	
	Height	79 cm		Height	46 cm
	Table-length requirement	76.5 cm		Table-length requirement	N/A
	Installed Length	125 cm		Installed Length (floor)	56 cm
	Exit transport			Vertical power stacker	
	Height	41 cm		Height	79 cm
	Table-length requirement	46 cm		Table-length requirement	N/A
	Installed Length	46 cm		Installed Length	36 cm
	Flats sealer for C4 envelopes				
	Height	79 cm			
	Table-length requirement	30.5 cm			
	Installed Length	30.5 cm			

Relay® 6000 inserter
system precisely folds
inserts and seals up to
4,300 pieces per hour.



Australia

Level 1, 68 Waterloo Road
Macquarie Park NSW 2113
13 23 63
pitneybowes.com/au

New Zealand

Building B, Unit 1 & 4
72 Apollo Drive, Rosedale
Auckland 0632
0800 748 639
pitneybowes.com/nz

For more information, call or visit us online.