

# iQueue - Prepress Workflow for the DP40S Colour Digital Printer



## The iQueue Prepress Workflow

iQueue represents the latest in automated prepress workflow designed for use with the DP40S Colour Digital Printer.

iQueue offers new workflow enhancements and advanced features which allows users to manage multiple digital files, set job priorities, track run counts, monitor consumables, estimate job cost, and increase overall shop production, and output quality.

## Independent CMYK Colour / Density Control

Many digital printing devices offer limited colour and density adjustment options. iQueue allows users to increase or decrease colour density, or edit Cyan, Magenta, Yellow and Black individually.

## Screening Options

iQueue gives you a wide variety of screening options. Select the desired linescreen (from 10 lpi to 240 lpi), screen angle, and halftone shape (Round, Ellipse, Euclidean, Line, Dual Dot and more).

## Colour Management

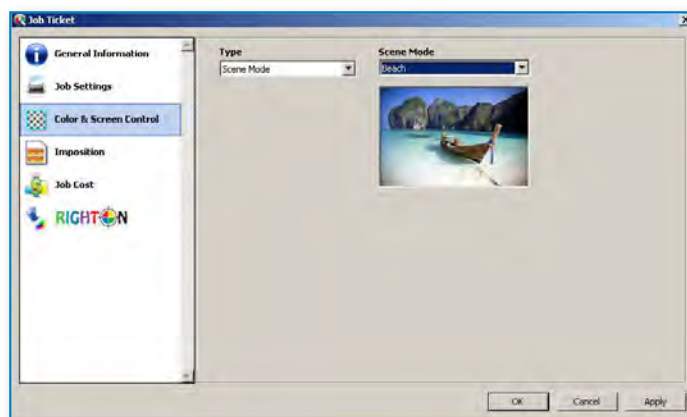
iQueue's integrated colour management tools allow you to make a wide variety of colour adjustments on-the-fly. Create and save custom RGB to CMYK profiles, convert CMYK to Grayscale, correct rich black text, and convert Spot Colours to CMYK.

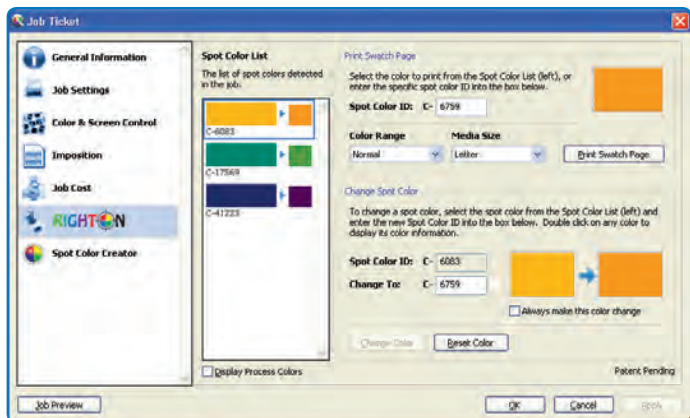
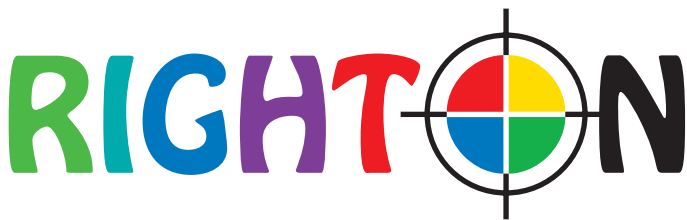
## Colour Proofing

Colour Proofing is quick and easy with iQueue. Simply click, print and review. Need to edit colours or density? No problem. Open the project's job ticket, make a quick adjustment and print another proof.

## Automatic Scene Modes

iQueue contains a new concept in colour adjustment called Scene Modes. Similar to screen modes of digital cameras, the 20+ modes were hand edited to give exceptional output quality targeted at specific image types. Simply select the desired scene mode profile and iQueue instantly applies the colour/screening adjustments for you.

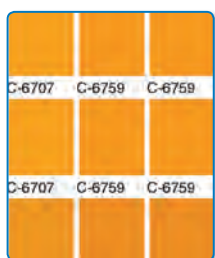




Bad CMYK Conversion



Spot Colour Matching using Right-On



## Spot Colour Matching System

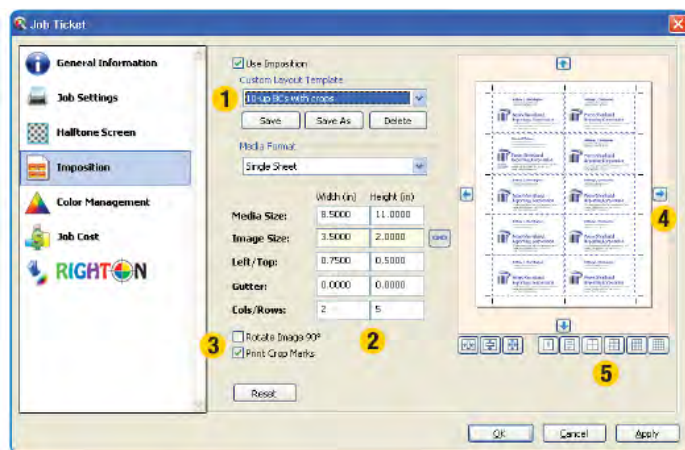
The Right-On Spot Colour Matching System uses a unique visual gamma comparison that allows users to make custom colour corrections on the individual spot colours found in a digital file. No other spot colour matching system gives you this much control over colour conversions. Now you don't have to settle for old standard conversions that ultimately disappoint your customers and cost you money.

## Job Cost Estimating

Now iQueue takes the guess work out of job cost estimating. Simply double click on a project name to bring up the Job Ticket, enter the desired run quantity then click on the Job Cost Tab to see the estimated consumables cost.

## iQueue Imposition/Plate Templating

Now you can quickly impose digital files with single or multiple pages using iQueue's new Imposition feature.



1. iQueue Imposition allows you to create and store custom imposition/plate templates to suit a wide variety of jobs
2. Set the desired media/plate size, margins/gripper, number of columns and rows
3. Rotate the image, print (add) crop marks
4. Nudge the template
5. You may also select one of iQueue's standard imposition templates to automatically impose a variety of jobs

## Job Archiving Organising

Organising and storing customer files in iQueue is easy. Simply create a folder, then drag & drop all projects you want to keep for that customer. iQueue also saves important job settings (inside individual job tickets), so re-prints are as easy as click, print.



Every connection is a new opportunity™

Pitney Bowes Australia Pty Ltd  
95A St Hillier's Road  
Auburn NSW 2144 Australia  
T: 13 23 63 F: (02) 9475 3460  
www.pitneybowes.com.au



### About Pitney Bowes:

Delivering more than 90 years of innovation, Pitney Bowes provides software, hardware and services that integrate physical and digital communications channels. Long known for making its customers more productive, Pitney Bowes is increasingly helping other companies grow their business through advanced customer communications management. Pitney Bowes is a \$5.3 billion company with 29,000 employees worldwide.

In the Growth Markets region comprising the Asia Pacific, Middle East, Africa and Latin Americas, Pitney Bowes operates directly in 15 countries with more than 1,200 employees and is supported by an extensive channel network of more than 100 partners. www.pb.com and http://growthmarkets.pb.com

iQueue and RightOn are copyright protected and trademarked by their respective owners.

Pitney Bowes is a proud foundation partner of Planet Ark's Business Recycling website.