



# Don't drop the pace

Improve the productivity  
of your incoming mail with the  
RED72 automated mail opening  
system from Pitney Bowes

## RED72: mail opening system for rapid content extraction

The RED72 Rapid Extraction Desk combines innovative technology with ergonomic design. It ensures that each operator works more efficiently making your incoming mail operation more productive.

The circulation of incoming mail is vital to the efficient running of any business. The Pitney Bowes RED72 Rapid Extraction Desk allows you to distribute high volumes of incoming mail quickly and accurately.

### Eliminate damaged mail

The RED72 gives you the choice of opening one or two sides of the envelope. In addition, there are three cut options – top edge only, top and side edges or a custom setting depending on the format and thickness of the envelope. This gives you the flexibility to deal with practically any mailpiece.

### Improve productivity

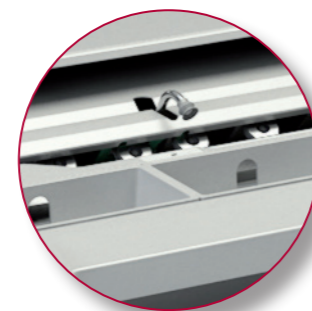
Once the cuts have been made, envelopes are presented to the operator at an ideal angle for visibility and extraction into one of the trays that are offered with the system. With a large feed capacity and speeds of up to 4,500 items per hour, the RED72 will ensure that you can meet even the most demanding service level agreement.

### Monitor performance

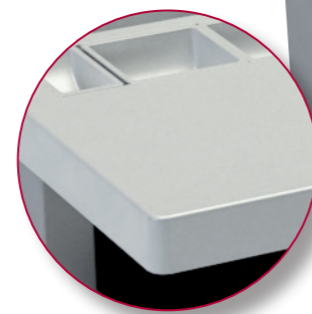
Through the intuitive microprocessor, the RED72 allows you to programme multiple operators and jobs to monitor individual output and productivity. Shift productivity reports can be produced through the optional printer to monitor performance levels.

### Ensure your operators are at ease

The RED72 is offered with an optional adjustable height work surface, which adjusts easily to provide an optimal working area for the height of your operator. The ergonomic design means that jams can be easily cleared from a comfortable seated position.



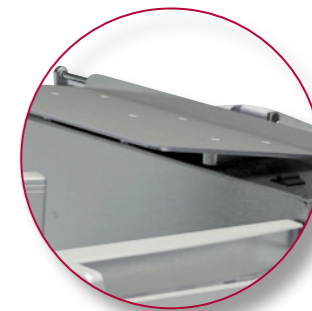
**4** The envelope is delivered to the operator positioned at an ideal angle and opened wide for easy extraction of contents



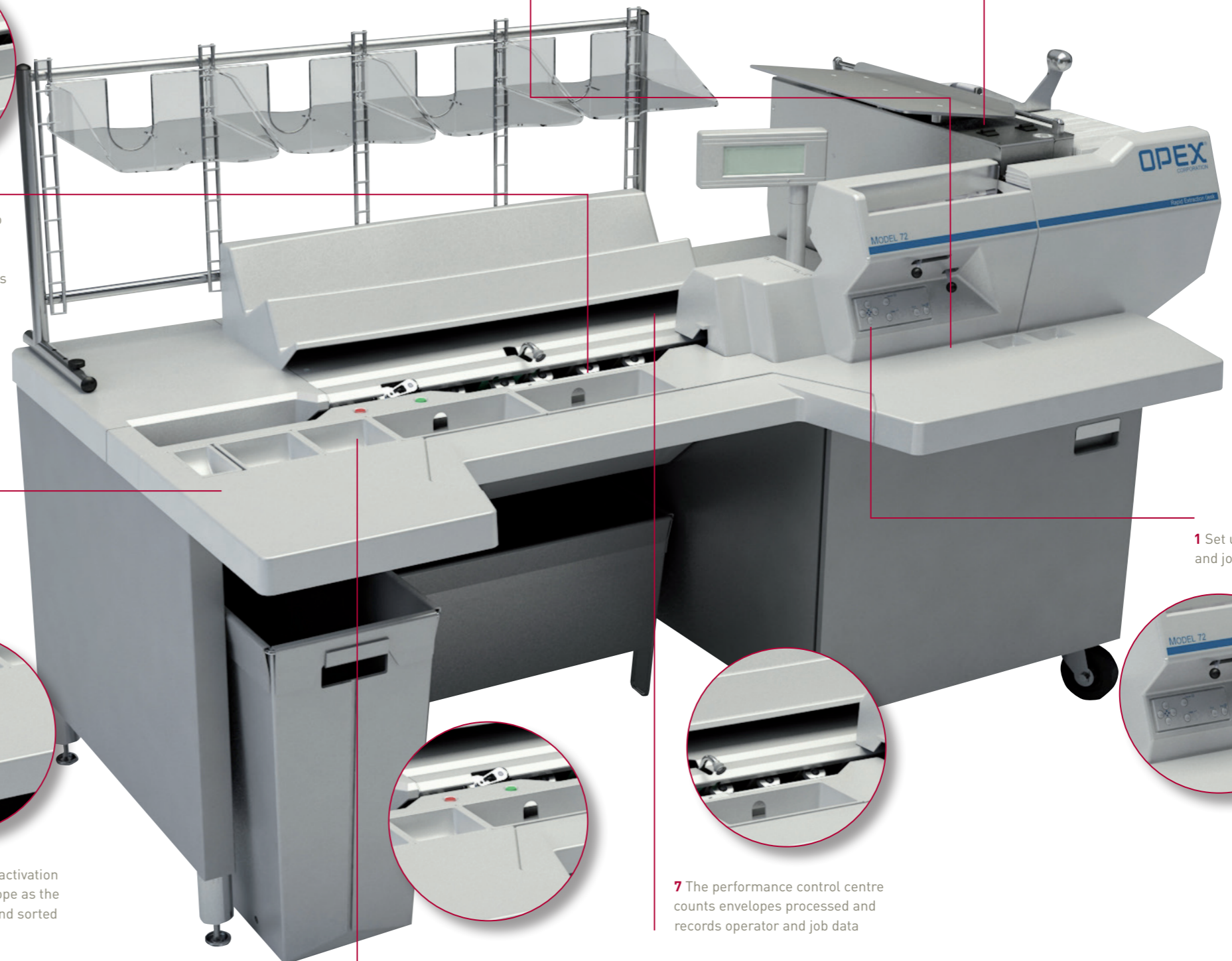
**5** The chosen envelope activation mode checks the envelope as the contents are removed and sorted



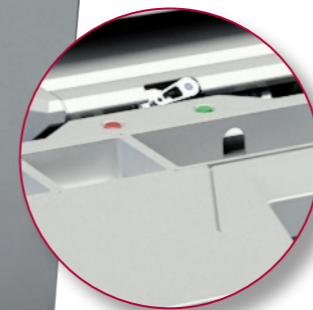
**3** Each envelope is 'pulled' onto the transport and fed into the cutting mechanisms for 1 or 2-sided opening



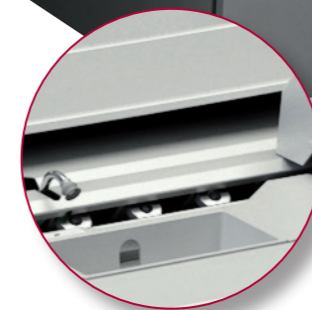
**2** Mail, which may include mixed sizes, is inserted into the feed tray



**1** Set up operator and job details



**6** A second check of the envelope contents is performed. If the envelope is not empty, a warning light alerts the operator. When an empty envelope is identified, it is automatically transported and dropped into a bin



**7** The performance control centre counts envelopes processed and records operator and job data



# Specifications

## Physical Specifications

Speed	4,500 pieces/hour
Length	1585 mm
Depth	1204 mm
Height	1341 mm
Operator/service clearance	610 mm
Electrical	220/240 VAC, 50Hz
Feed tray capacity	559 mm

## Envelope Specifications

Height	76-152 mm
Length	102-254 mm
Minimum paper weight	25 mm



Pitney Bowes  
Level 1, 68 Waterloo Road  
Macquarie Park NSW 2113  
T: 13 23 63  
E: [contactus.au@pb.com](mailto:contactus.au@pb.com)

[www.pitneybowes.com/au](http://www.pitneybowes.com/au)



Pitney Bowes, a global technology company, provides shipping & mailing solutions, data management software, and location intelligence offerings, powering billions of physical and digital transactions in the connected and borderless world of commerce.

Helping clients achieve their greatest commerce potential are Pitney Bowes' 16,000+ passionate employees around the world, our relentless pursuit of innovation with over 2,300 active patents, and our focus on clients, who are at the center of all that we do - from small businesses to 90% of the Fortune 500.



Pitney Bowes certifies that the RED72 complies with the requirements of the Low Voltage Directive 73/23/EEC and the EMC Directive 89/336/EEC.