



Location Intelligence
Geographic Information Systems



MapInfo® Pro v17

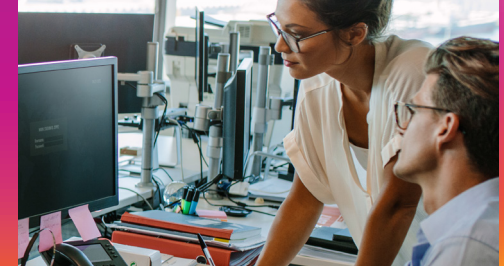
Stronger, smarter and simpler because of you.

[Free trial >>](#)



"MapInfo® Pro v17 is easier to use and more powerful than ever, meaning I am more productive than ever."

– Ryan Richter GIS, Network Data Analyst



Your input drives greater output.

MapInfo Pro is all new, thanks to you. Real-world MapInfo Pro users have helped us to create the new v17. These beta participants helped enhance, refine and validate to shape the most user-friendly, fastest and most powerful MapInfo Pro ever. Thanks to these collaborations, you and your organisation can find actionable geospatial insights quicker.

Take a look, you'll see how MapInfo Pro is stronger, smarter and simpler than ever.



Every spatial problem is addressable.

Speed your way to the insights needed for better geospatial decision-making with MapInfo Pro v17.

Stronger: More powerful visualisation and performance

Smarter: Intuitive design for greater productivity

Simpler: Easier to learn, use and upgrade



Visualise, create and share with more power.

MapInfo® Pro v17 features stronger performance improvements from top to bottom. With support for massive files, outstanding platform stability and award-winning raster capabilities, you can create your most powerful visualisations and spatial analytics. Plus, extreme processing speeds and a highly intuitive design help you reach business decisions sooner.

- Web services for drive-times and geocoding
- Bigger data files
- Improved performance
- Enhanced image quality
- Unicode support
- .NET SDK
- GeoPackage format
- WMTS 1.0 support
- WFS 2.0 support
- FME 2017 support

Power up your performance.

Web services for drive-times and geocoding

Online drive-time and geocoding services require no installation or up-front investment. These pay-as-you-go web services make it easy to quickly geocode tables of addresses and generate drive-time or drive-distance boundaries.

Bigger data files

Work with large TAB files to tackle your big data challenges. Visualise information across nations and continents with no need to divide data into multiple tables.

Improved performance

A smarter way of managing indices on TAB files makes table delete and update operations faster. The speed of queries and selections is significantly faster, especially when dealing with large numbers of records. Perform multiple operations in the background, leaving MapInfo® Pro free for continued use while the operation is being run.

Enhanced image quality

Design enhancements minimise pixilation for clearer, crisper images even as you zoom in close.

Unicode support

With support for UTF-8 and UTF-16, tables and maps can now support multiple languages. Multilanguage tables will be displayed properly in maps, browsers, the Info Tool, etc. You can also mix data from different character sets in the same map.

.NET SDK

With a .NET object model added to the user interface, you can build more sophisticated add-ons using the full power of the Windows environment. Built-in sample apps can help get you started.

GeoPackage format

Read and write data into the ubiquitous GeoPackage data format. This allows for multiple tables to be stored in a single file. You can easily share data with other Pitney Bowes products, as well as many GIS systems and spatial technologies.

WMTS 1.0 support

Read tile sets from WMTS 1.0 servers, an added source of background mapping for your projects.

WFS 2.0 support

In addition to v1.0 and v1.1, MapInfo Pro also supports WFS 2.0.

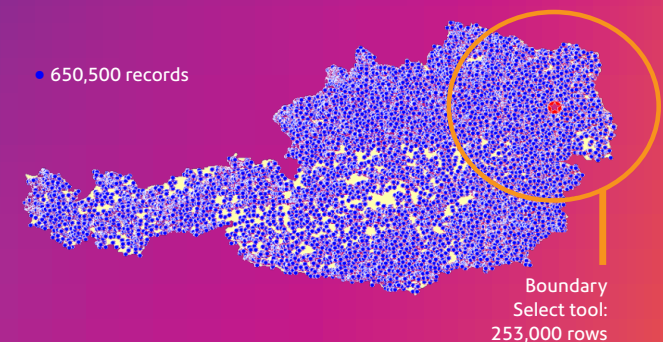
FME 2018 support

The Universal Data Import now utilises FME 2018. This includes bug fixes and enhancements. For UK customers, MapInfo Pro v17 also supports certain Ordnance Survey specific import formats.

Faster is better.

Benefit from powerful 64-bit processing when you make the move to v17.

	32-bit	64-bit
Use Boundary Select tool	3 minutes 1 second	25 seconds
Invert the selection	6 minutes 4 seconds	3 seconds
Clear the selection	1 minute 42 seconds	6 seconds
Add Point Layer to Map	1 minute 43 seconds	4 seconds



Comparison of MapInfo Pro 32-bit and 64-bit versions using a Dell Latitude E6420 with Intel Core i7 (4 dual core 2.2 ghz processors), 8 GB RAM and Windows 7. Point Layer viewed 650,500 records. Boundary Select tool selected 253,000 rows.



Smarter in every way possible.

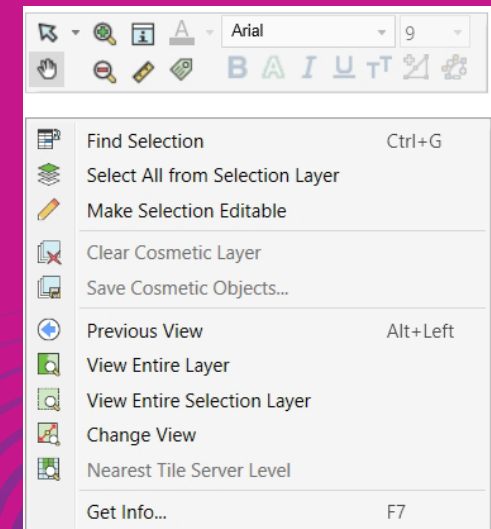
By listening to MapInfo® Pro users, we made v17 a more intuitive tool that helps you arrive at fast answers to your most complex geospatial challenges. Navigate in fewer clicks, create visualisations with less editing and generate powerful spatial analytics with greater confidence. From a new welcome screen to time-saving, customisable ribbon menus and toolbars, v17 helps add efficiency to your work day.

“The addition of the mini toolbar has changed the way I work entirely. This one change is worth the upgrade to me.”

– Steve Wallace, 26-year user of MapInfo Pro

- Ribbon Menu customisation
- Map tool bar customisation
- Advanced raster capabilities
- Interactive individual value, graduated and ranged themes
- Dynamic themes
- Hotkey improvements

Customisable mini-toolbars



Accelerate your insights.

Ribbon menu customisation

New customisation options let you optimise ribbon menus for layout and your use, making it easier to interactively explore your data.

Map toolbar customisation

New customisable mini-toolbars enable you to access your most-used commands quickly, with just a right click, so you can work more efficiently.

Advanced raster capabilities

The multi-resolution raster (MRR) file format in MapInfo Pro™ Advanced can handle massive datasets, rendering terabyte-scale images with amazing speed. The MRR format is both flexible and powerful, so you can gather data at differing resolutions and still generate meaningful analysis. Process MRR files in the background: you can utilise the full MapInfo Pro capabilities while running large raster operations.

Hotkey improvements

To revert to the “select” pointer from any frequently used tool, simply click Esc. There’s no need to reset using ribbons or toolbars.

Interactive individual value, graduated and ranged themes

Establish and manipulate themes to arrive at the views you need. Thematic Mapping displays include interactive drop-down menus that allow you to change theme variables. You can turn ranges or values on and off with check-box ease.

Undo/Redo operations

Within the layout window, you can correct mistakes in an instant. Familiar multi-step undo/redo functionality updates operations including add, delete, move, resize of layout objects (maps, images and text), etc.

Drop-down check box menus in v17 let you change theme ranges and values with a few quick clicks.



Powerful raster capabilities



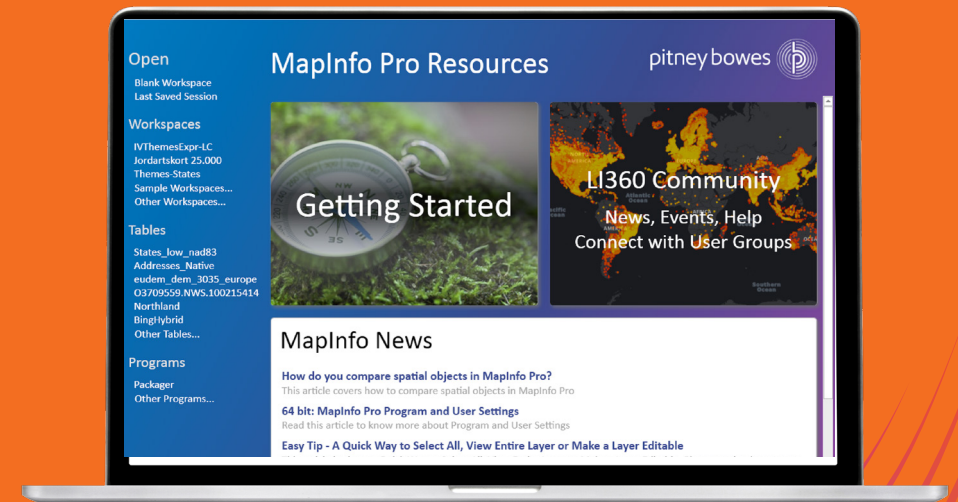


Easier to use, learn and upgrade.

Extensive user input has helped to make MapInfo Pro™ v17 easier in every way. Start faster with easy-to-follow tools, how-to articles and video tutorials. Navigate, locate, save and share with greater speed. Join the fast-growing Li360 user community. Thanks to your input, you'll quickly discover greater output.

- New welcome screen
- Quick search window
- Layout templates
- Improved alignment with smart guides
- Multipage layouts
- Easy rotation

New welcome screen



Simplify your every step.

New welcome screen

Gain quick access to everything in MapInfo® Pro. Tips and tools will get you started. Video tutorials will show you around. A sample workspace, pre-built and loaded with data, makes it easy to give v17 a try. With one-click access to your most recent files and the fast-growing Li360 User Community, you have what you need, right from the start.

Quick search windows

Quick search windows streamline transition from earlier versions of MapInfo Pro. Just type in what you're looking for. The quick search shows you the corresponding commands on the navigation ribbon and launches commands for you. It's a simple way to become familiar with the intuitive ribbon interface and its benefits.

Layout templates

New support for layout templates allows you to select from pre-built templates supplied with MapInfo Pro, or to build and reuse templates of your own design.

Improved alignment with smart guides

Improved snap-to functionality quickly brings objects into line relative to each other, paper page margins or guidelines so you can work faster with greater precision.

Multi-page layouts

Create and manage multi-page layouts and save them as a PDF document. Familiar page thumbnails simplify navigation.

Easy rotation

Select a symbol, text object or image on your Layout. Using a simple dropdown list, you can quickly choose a rotation angle for the selected item.

"I have been very impressed by how responsive everyone from Pitney Bowes have been, and how it's suddenly possible to get a dialog with the actual developers behind your programs.

A big thumbs up from here!"

– Jonathan Langholz Jensen, GIS user





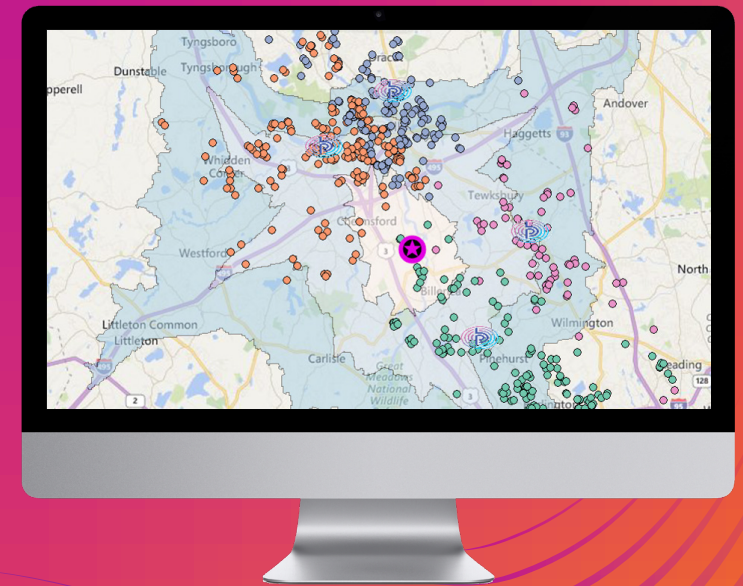
Step up to the stronger, smarter, simpler MapInfo® Pro.

Gain the insights needed for better geospatial decision-making. With user-inspired, game-changing enhancements, v17 brings new agility to your mapping and spatial analysis.

Join the **Li360 User Community** to collaborate with other GIS professionals around the world. You'll quickly discover how everything is addressable with MapInfo Pro.

Try it today.

[Free trial >>](#)



For more information about Pitney Bowes, the
craftsmen of commerce, visit pitneybowes.com/au

Pitney Bowes, the Corporate logo, MapInfo, MapInfo Pro, MapBasic and Spectrum Spatial are trademarks of Pitney Bowes Inc.
or a subsidiary. All other trademarks are the property of their respective owners.
© 2018 Pitney Bowes Inc. All rights reserved.