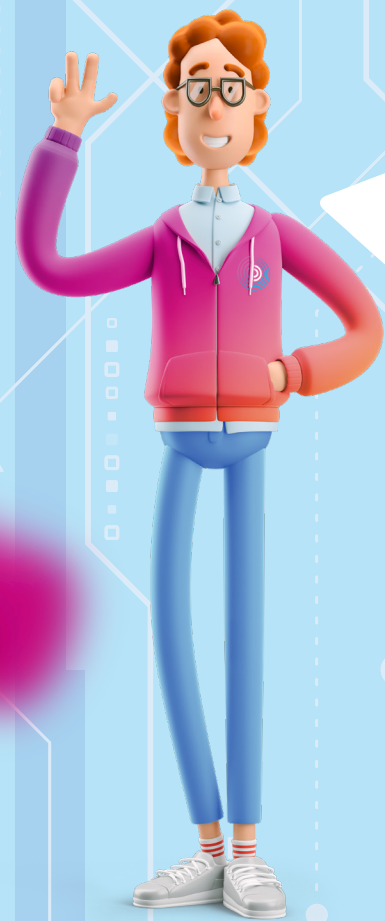


Pitney Bowes Smart Access Management™ (SAM)

Powered by VisitorRego

**Delivering assurance.  
Inspiring confidence.**

**SAM Counter Pro**



**Hi – I'm SAM**, let me be your Digital Concierge. I know how tricky it can be for businesses to manage visitor access in today's hybrid world of work. I'd like to help you protect your organisation. Let my intelligence provide you with all the information and insight you need to manage and control your physical and digital spaces.

Speak to Pitney Bowes today to find out more about how I can help:

- Create a **welcoming, actively managed** environment for authorised people
- Deliver **intelligent technology for constantly changing requirements** and back-end prerequisites
- **Protect your people, premises and reputation** through effortless enforcement of security and compliance while providing a warm welcome for your visitors.

## SAM features:

SMS/email notifications when a contractor or visitor arrives

Quick and easy temperature checking with PB TempCheck

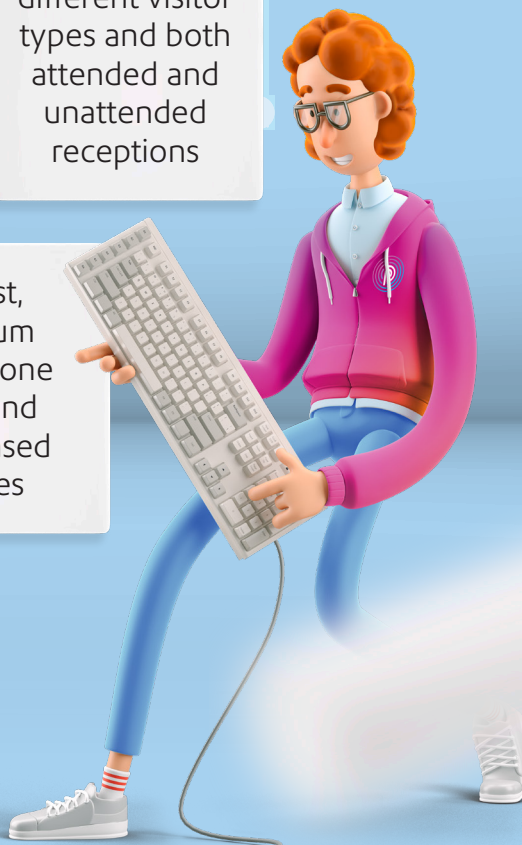
Ease of use, avoiding bottlenecks at reception

Flexibility to suit different visitor types and both attended and unattended receptions

Zero touch access via QR code for frequent visitors and users who pre-register

Large screen with customisable graphics and appearance for brand consistency

Robust, premium stand alone kiosk and desk-based devices



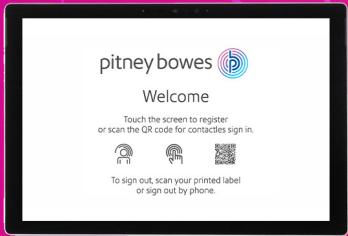
# Smart Access Management™ (SAM) Counter Pro



Omni-directional scanner



Thermal printer



Secure tablet enclosure

### What's the difference between the Counter Go and Counter Pro?

The main difference is the screen size; the Counter Pro offers a larger screen than the Counter Go.

#### Hardware

- Microsoft Surface Pro or Go tablet.
- 2D barcode scanner
- Thermal printer
- Flexible housing

#### Connections

- 2x Power lead
- Wi-Fi and network compatible

Specifications*	Counter Pro	Counter Go
<b>Tablet dimensions</b>	292 mm x 201 mm x 8.5 mm	245 mm x 175 mm x 8.3 mm
<b>Display</b>	<ul style="list-style-type: none"><li>• Screen: 12.3" PixelSense™ Display</li><li>• Resolution: 2736 x 1824 (267 PPI)</li><li>• Aspect ratio: 3:2</li><li>• Touch: 10 point multi-touch</li></ul>	<ul style="list-style-type: none"><li>• Screen: 10" PixelSense™ Display</li><li>• Resolution: 1800 x 1200 (217 PPI)</li><li>• Aspect ratio: 3:2</li><li>• Touch: 10 point multi-touch</li><li>• Corning®Gorilla® Glass 3</li></ul>
<b>Memory</b>	4GB	4GB
<b>Processor</b>	Dual-core	Intel®Pentium®
<b>Storage</b>	128GB	64GB
<b>Camera</b>	5.0MP front-facing camera with 1080p	5.0MP front-facing camera with 1080p
<b>Wireless</b>	<ul style="list-style-type: none"><li>• Wi-Fi: IEEE 802.11 a/b/g/n/ac compatible</li><li>• Bluetooth Wireless 4.1 technology</li></ul>	<ul style="list-style-type: none"><li>• Wi-Fi: IEEE 802.11 a/b/g/n/ac compatible</li><li>• Bluetooth Wireless 4.1 technology</li></ul>
<b>Approximate tablet weight</b>	784g	532g

\*Device specifications are subject to change. Any changes will be of equal or greater specification.

## Select the subscription level that fits your organisation

### Primary

- ✓ Registrations per week-100 (excluding staff)
- ✓ Offline usability
- ✓ Emergency printouts
- ✓ Online emergency data
- ✓ Online dashboard and reports
- ✓ Visitor labels printing
- ✓ Barcode sign out
- ✓ Screens and settings customisation
- ✓ Visitor health and safety info

### Essential

- As per **Primary, plus:**
- ✓ 100 additional registrations per week (excluding staff)
  - ✓ Email and SMS\* notifications
  - ✓ Re-usable labels sign in
  - ✓ Permanent ID sign in
  - ✓ Up to two workflows

\*SMS notification will incur extra charges per SMS.

### Premium

- As per **Essential, plus:**
- ✓ Unlimited registrations
  - ✓ Contractor health and safety info
  - ✓ Active Directory integration
  - ✓ Electronic reception bell
  - ✓ Appointment pre-registration
  - ✓ Three additional workflows (five total)

### Enterprise

- As per **Premium, plus:**
- ✓ Send online inductions
  - ✓ Keep track of site requirements
  - ✓ Manage expiry dates
  - ✓ Instant notification of non-compliance
  - ✓ Monitor contractor hours
  - ✓ Maintain company compliance details





**Australia**

Level 1, 68 Waterloo Road  
Macquarie Park NSW 2113

**13 23 63**

[pitneybowes.com/au/smart-access-management](https://pitneybowes.com/au/smart-access-management)

**New Zealand**

Building B, Unit 1 & 4  
72 Apollo Drive  
Rosedale  
Auckland 0632

**0800 748 639**

[pitneybowes.com/nz/smart-access-management](https://pitneybowes.com/nz/smart-access-management)

For more information, call or visit us online.