



Shipping & Mailing

Postage Meters

# Get connected to stay connected.

Beginning **October 1, 2022**, Pitney Bowes will no longer support traditional analog phone line connections to our postage meters. This means that essential functions such as refilling postage, downloading the latest Canada Post Postal rates and updating software will no longer be possible once analog phone services are discontinued.

Connecting your postage meter digitally is easy and will avoid any business disruptions, allow you to save money by eliminating the cost of a dedicated phone line and will provide a faster, more reliable connection.

## Pitney Bowes offers two options for you to connect digitally.

### Replace your current meter

Upgrade to one of our state-of-the-art, digitally connected Upgrade to one of our state-of-the-art, digitally connected SendPro® mailing and shipping solutions.

Contact your account representative today or visit [pitneybowes.com/ca/en/postage-meters](https://pitneybowes.com/ca/en/postage-meters)



### Order a digital connection device

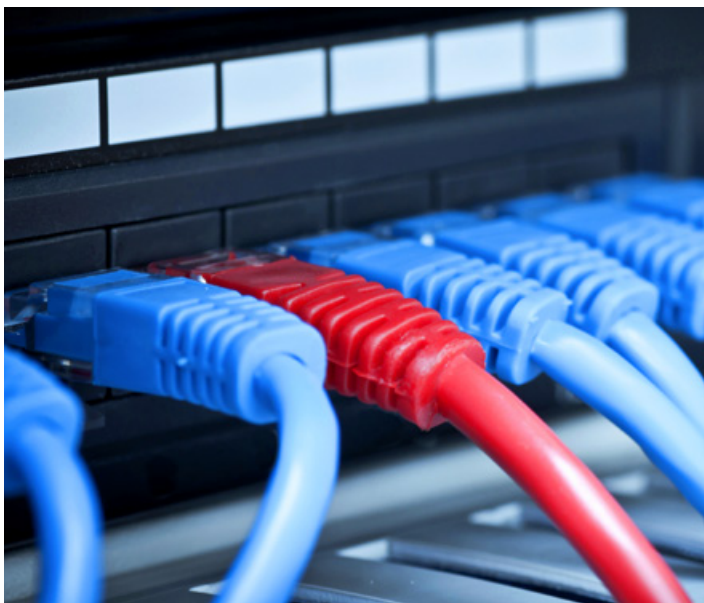
Connect your current Pitney Bowes meter via an internet connection with a SmartLink™ device.

Visit [pitneybowes.com/ca/en/smartlink](https://pitneybowes.com/ca/en/smartlink)  
Use promo code "SHIPLINK" for free shipping.\*

\*Limited to one SmartLink per customer.  
Available until October 14, 2022



For more information, visit us online: [pitneybowes.com/ca/en/connect](https://pitneybowes.com/ca/en/connect)



## Use your SmartLink device to connect digitally:

01. Locate your digital connectivity adapter for the ethernet connection that came with your meter.\* If you can't find the adapter, you can easily purchase one from our supplies store.
02. Then, watch a short video or download a manual on how to install your connectivity adapter.

\*Depending on the meter type and age of your meter, a digital connectivity adapter was likely included with your meter. All new meters now include an ethernet adapter.

For more information, visit us online:  
[pitneybowes.com/ca/en/connect](http://pitneybowes.com/ca/en/connect)

### Connection options by meter

|                               | K7EC/K7C2<br>mailstation/<br>mailstation2  | DM100i/<br>DM200L   | DM125/<br>DM225   | DM300C/<br>DM400C   | DM475   | DM500-1100                                       |
|-------------------------------|--|---|---|---|---|--|
| Preferred connectivity option | SmartLink™<br>Ethernet/WiFi  | SmartLink<br>Ethernet/WiFi                                  | SmartLink<br>Ethernet/WiFi  | SmartLink<br>Ethernet/WiFi  | SmartLink<br>Ethernet/WiFi  | Ethernet   |
| Connectivity kit included     | mailstation<br>Ethernet/WiFi<br>Communication Device<br><br>SmartLink<br>Ethernet/WiFi | USB Cable for PCMC<br><br>SmartLink<br>Ethernet/WiFi        | DM Series<br>USB Ethernet<br>Connectivity<br>Kit  | DM Series<br>USB Ethernet<br>Connectivity<br>Kit  | Ethernet<br>enabled<br>- Ethernet cable<br>included<br>- No kit required                          | DM Series<br>USB Ethernet<br>Connectivity<br>Kit |
| Connectivity options          | Communication Device<br>Ethernet/WiFi<br>or<br>SmartLink<br>Ethernet/WiFi              | SmartLink<br>Ethernet/WiFi<br>or PC Meter Connect<br>(PCMC) | SmartLink<br>Ethernet/WiFi or<br>USB Ethernet<br>Adapter or WiFi or<br>PC Meter Connect<br>(PCMC) | SmartLink<br>Ethernet/WiFi or<br>USB Ethernet<br>Adapter or WiFi<br>or PC Meter<br>Connect (PCMC) | SmartLink<br>Ethernet/WiFi<br>or USB Ethernet<br>Adapter or WiFi<br>or PC Meter<br>Connect (PCMC) | USB Ethernet<br>Adapter or<br>WiFi               |



Canada  
 5500 Explorer Drive  
 Mississauga, ON L4W 5C7

