



# THE MAPINFO® SUITE DATA SHEET

## Solutions for Enabling Lifetime Customer Relationships

INTEGRATED SOLUTION FOR  
GEOSPATIAL DATA ANALYSIS

## Overview

The MapInfo Suite is changing the way organisations analyse, manage and share enterprise data. Now business analysts, planners and GIS professionals can visualise and share insights from location-based business intelligence – all from a single, tightly integrated set of solutions.

Built around MapInfo Professional, the powerful Microsoft® Windows®-based mapping application, the MapInfo Suite lets users access global data catalogues, condition and enhance data, create attractive, informative maps and publish them for internal and external audiences – without jumping between applications, converting files, wondering about data vintage or creating workarounds.

## Manage Data Right from MapInfo Professional

- Pinpoint potential across your organisation, thanks to the ability to visualise location-based intelligence like never before.
- You can easily share and manage spatial data across your organisation with MapInfo Manager.
- Through MapInfo Stratus, users can publish layered, interactive maps to the Web directly from MapInfo Professional. There's no need to switch programs.
- Geocode, verify and standardise data on the fly with the Pitney Bowes Spectrum™ Technology Platform.

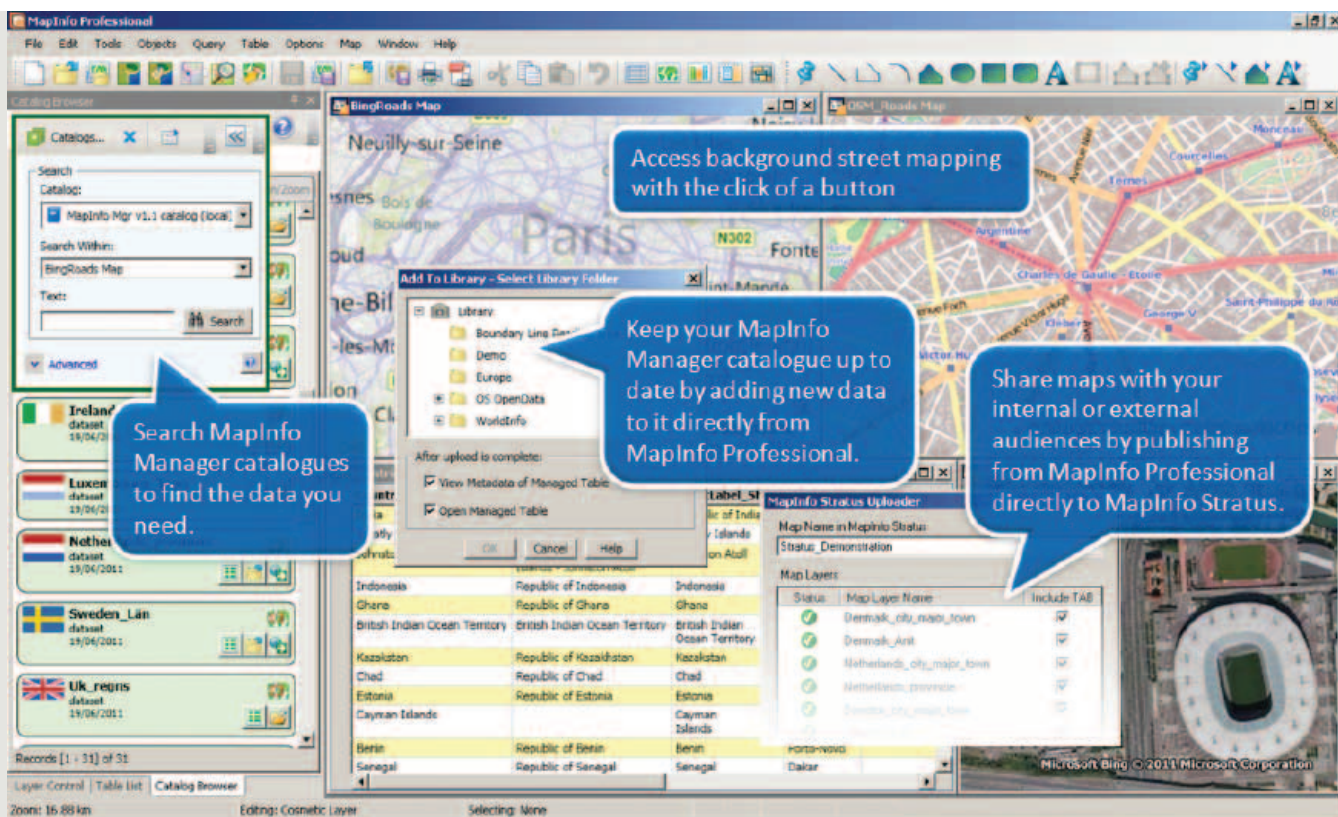
## SUMMARY

The MapInfo Suite lets you manage geospatial assets, visualise business intelligence and share high-quality interactive maps faster and easier than ever before, helping you save time and improve decision-making. Get more out of every piece of data every day with the MapInfo Suite: MapInfo Professional (desktop mapping), MapInfo Stratus (Web mapping), Spectrum Technology Platform (enterprise geocoding and mapping) and MapInfo Manager (managing spatial data assets).

## New Features for New Views of Your Business

Take your understanding of your customers and markets beyond spreadsheets and charts with MapInfo Professional, the powerful Microsoft Windows-based mapping and geographic application that forms the foundation of the MapInfo Suite.

Version 11.5 makes it easier than ever to do more with your location-based intelligence. Key updates are highlighted on the following page:



## MapInfo Professional v11.5 Benefits

- Ability to design better legends. Now users can easily create pleasing, easy-to-read legends with the new Legend Designer.
- A more intuitive browser window offering quick filtering and sorting for more insight with fewer clicks.
- Ability to create a single point of truth. Nominated users can now edit metadata from their corporate data from within MapInfo Professional.
- Continued improvements to MapInfo Professional's renowned ease of use, including time-saving enhancements such as better support for dual monitors.

MapInfo Professional's Premium Service adds Microsoft Bing™ Maps world road data for richer, more informative maps and a 'move map to' feature that instantly locates any place in the world simply by typing its name or address. Gaining and sharing location intelligence has never been this easy.

## Share and Manage Enterprise Data Instantly

Create an easily searchable, industry-standard catalogue to manage enterprise data, improve access and avoid duplicate purchases. MapInfo Manager, integrated with MapInfo Professional version 11.5, catalogues and harvests metadata to create a single point of truth for spatial data assets. Built on Open Geospatial Consortium (OGC) Catalog Services Web (CSW) standards, MapInfo Manager catalogs can be searched by MapInfo Professional and other OGC-compliant CSW service applications.

## Publish Live, Interactive Maps Online

Publish spatial data directly from MapInfo Professional to the Cloud, where it can be accessed immediately by users through a Web browser, providing information when and where they need it.

MapInfo Stratus, a Web-based mapping application, lets you share interactive maps and services with just a few clicks – providing Web 2.0 mapping capabilities and feature-rich applications that help the entire enterprise make better, more informed decisions.

## MAPINFO PROFESSIONAL v11.5 BENEFITS

- Visualise enterprise data in rich and insightful new ways with premium map services.
- Create and share enterprise data with a searchable, industry-standard catalogue.
- Deliver interactive map data and services to the Web with just a few clicks.
- Continued improvements to MapInfo Professional's renowned ease of use.

## A Seamless Platform for Geospatial Data Management

From gathering data to acting on business intelligence, the MapInfo Suite helps you manage and exploit your geospatial data assets – to save time, money and resources – and help your organisation share location intelligence.

FOR MORE INFORMATION, VISIT [HTTP://GO.PBSOFTWARE.EU/MISUITE](http://go.pbssoftware.eu/misuite)

**Pitney Bowes Software**

Very easy to learn and use. Build your library and share data with a few mouse clicks.

**MapInfo Manager**

**Data Management | Metadata Setup | System Administration**

**Library:** Quickly build a single point of truth for all of your spatial data.

**Catalogs:** Multiple catalogues can be created to share data with different groups of users.

**WMS:** Share maps internally or over the Internet.

**Distributions:** Your data can be accessed directly in MI Pro as well as via a Web Map Server.

Modified	Keywords	Type	Abstract	Distributions
19/06/2011 15:32	StreetPro.	dataset	Examples of layers from FBBi StreetPro.	
19/06/2011 15:32	StreetPro.	dataset	Examples of layers from FBBi StreetPro.	
19/06/2011 15:32				
19/06/2011 15:32	Denmark_city_major_town			
19/06/2011 15:32	Finland_city_major_town			
19/06/2011 15:32	Finland_Lahti			
19/06/2011 15:32	National			
19/06/2011 15:32	sample data	dataset	Sample data that comes with MapInfo Professional	
19/06/2011 15:32		dataset	Sample data that comes with MapInfo Professional	
19/06/2011 15:32		dataset	Luxembourg Geospatial topographic layer. This is a TAB file pointing at a WMS.	
19/06/2011 15:32		dataset	Examples of layers from FBBi StreetPro.	
19/06/2011 15:32		dataset	Examples of layers from FBBi StreetPro.	
19/06/2011 15:32		dataset	Examples of layers from FBBi StreetPro.	
19/06/2011 15:32		dataset	Examples of layers from FBBi StreetPro.	
19/06/2011 15:32	sample data	dataset	Sample data that comes with MapInfo Professional.	
19/06/2011 15:32	sample data	dataset	Sample data that comes with MapInfo Professional.	
19/06/2011 15:32		dataset		
22/06/2011 22:55	RDG_county_region			

*MapInfo Manager helps organisations to get the most from their data by enabling all who need data to be able to find it, understand it and access it.*

For more information call 0800 840 0001 or visit us online: [www.pbsoftware.co.uk](http://www.pbsoftware.co.uk)

UNITED STATES

800.327.8627

[pbsoftware.sales@pb.com](mailto:pbsoftware.sales@pb.com)

## INDIA

+91 120 402 6000

[contactindia@pb.com](mailto:contactindia@pb.com)

[www.pitneybowes.co.in/software](http://www.pitneybowes.co.in/software)

EUROPE/UNITED KINGDOM

+44 (0)800 840 0001

[pbsoftware.emea@pb.com](mailto:pbsoftware.emea@pb.com)

**ASIA PACIFIC/AUSTRALIA**

+61.2.9437.6255

[pbsoftware.australia@pb.com](mailto:pbsoftware.australia@pb.com)

pbsoftware.singapore@pb.com