



Alternative connection methods

As an alternative to connecting directly to the network, you may wish to connect via your PC. In this instance, your franking machine will connect to your PC which in turn is connected to the Internet via your network.

Method		Benefits	Requirements	
PC Meter Connect		<ul style="list-style-type: none"> • Fast upload/download speeds • No dedicated analogue phone line and cost • No cost of phone call to connect your machine • Secure to use on your network 	We will provide	You will need
			<ul style="list-style-type: none"> - USB A to B cable - PC Meter Connect software via a simple download 	<ul style="list-style-type: none"> - Networked PC with an active connection - Access via network through firewall (if applicable)

Finally, should you be unable to connect to the network via any of our recommended methods, you may wish to connect via analogue phone line. In this instance, your franking machine will connect via a telephone line to Pitney Bowes.

Method		Benefits	Requirements	
Analogue Telephone Line		<ul style="list-style-type: none"> • Secure access via a telephone line 	We will provide	You will need
			<ul style="list-style-type: none"> - Analogue telephone cable - Telephone line splitter if sharing with other device, such as fax machines 	<ul style="list-style-type: none"> - Analogue telephone point

How do I complete the installation of my DM220 Series?

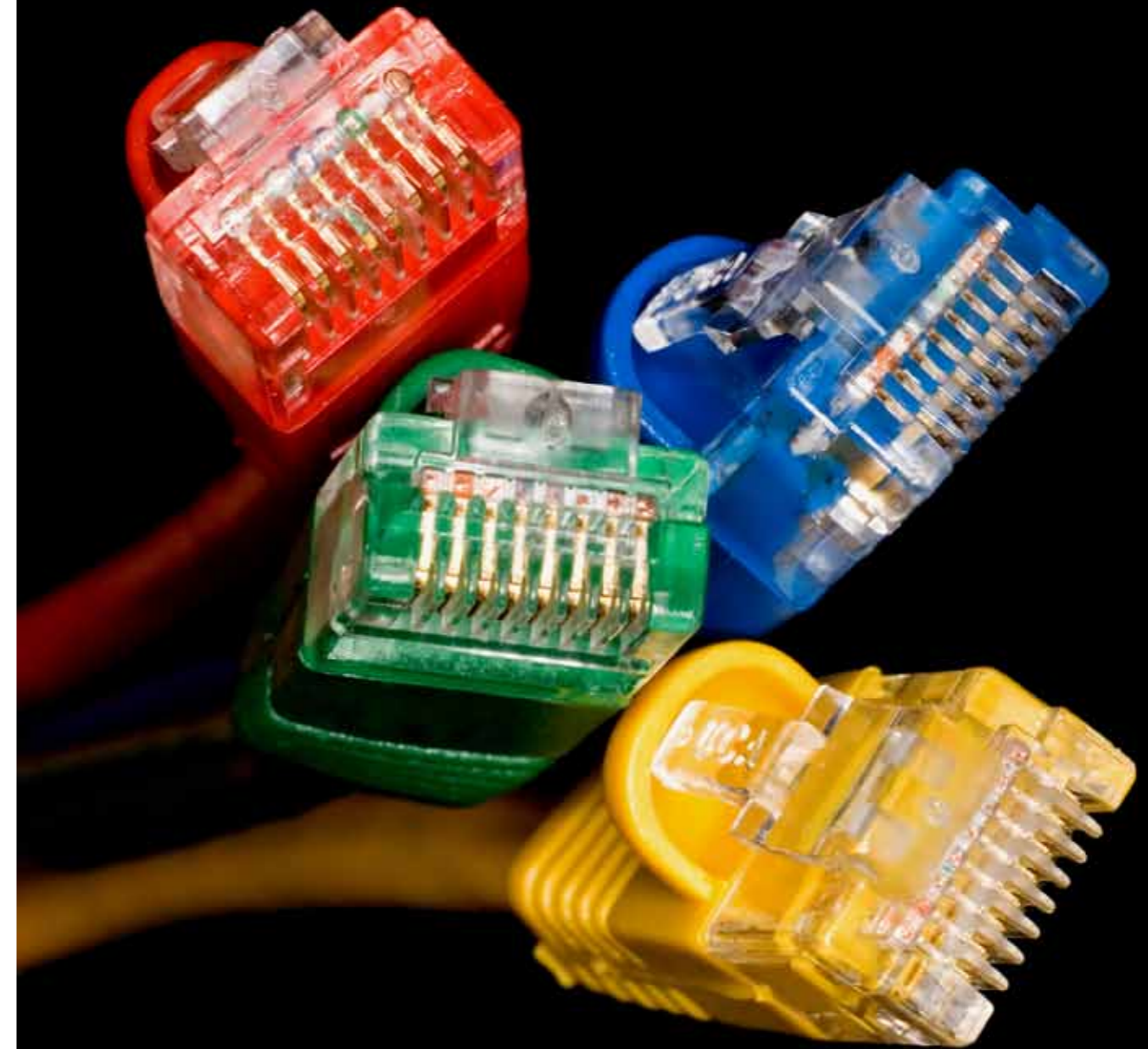
Prior to the arrival of your new franking machine, you will receive a series of emails that are designed to keep the installation of your machine as simple as possible. These emails are triggered at important stages of your order fulfilment.

Following shipment of your equipment, you will receive an email to help you install your franking machine. This email will allow you to download an installation guide and view a video to support your franking machine installation.

Your new franking machine will also be supplied with a printed version of the installation guide that you may prefer to follow in order to get your new machine up and running. All you need to do is follow your preferred connection method and follow the relevant information in the guide or video to ensure your installation is a success.

DM220i™ constant connection

Your gateway to optimum mail productivity



 Pitney Bowes

Pitney Bowes Limited
Elizabeth Way, Harlow
Essex CM19 5BD
T: 08444 992 992
F: 08702 415 249



© 2012 Pitney Bowes Ltd. All rights reserved.
Delivering more than 90 years of innovation, Pitney Bowes provides software, hardware and services that integrate physical and digital communications channels. Long known for making its customers more productive, Pitney Bowes is increasingly helping other companies grow their business through advanced customer communications management. Pitney Bowes is a \$5.3 billion company with 29,000 employees worldwide. Pitney Bowes: Every connection is a new opportunity™. www.pb.com

Thank you for choosing Pitney Bowes. Your new franking machine uses a 'constant connection' to ensure that you get the best possible performance from your equipment.

Constant connection will allow you to:

- Save time adding new funds onto your franking machine
- Be VAT compliant
- Save money by viewing simple spend reports
- Deliver results by downloading promotional envelopes
- Get postal tariff updates faster

How will constant connection work for me?

Your DM160i or DM220i franking machine offers multiple connectivity options to ensure that you remain in constant connection with Pitney Bowes.

Pitney Bowes recommend a LAN connection via a network point or router, as this connection method provides you with the fastest connectivity speeds, reduced cost (as there is no need for dial up costs incurred through an analogue line) and ensures that you do not need to log onto to a PC in order to connect your franking machine.

This method of connection also means that at times of peak traffic into Pitney Bowes such as at Royal Mail rate change, you will be able to connect and transfer data within seconds, without disruption to your business operations.

Prior to taking receipt of your new franking machine, we ask that you consider the connectivity method that best suits you. This will ensure that you get up and running quickly when your new machine arrives.

What will constant connection do for me?



Save time

Refill your franking machine with additional funds at optimum speeds.



Be compliant

Transfer usage information relating to postal services that are subject to VAT.



Understand your spend

Transfer postage spend information by class and format.



Minimise disruption

Download postal rate updates onto the franking machine without disrupting your business.



Deliver results

Download powerful and relevant envelope messages for printing onto your mail.


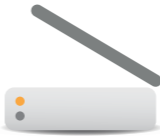


Stay connected

Get future software and feature upgrades.

The information below will help you identify the most suitable connection method and prepare you for your installation

Which connection should I use?

Method		Benefits	Requirements	
			We will provide	You will need
Direct Network Connection		<ul style="list-style-type: none"> • Faster upload/download speeds • No dedicated analogue phone line and cost • No cost of phone call to connect your machine • Secure to use on your network • Constant connection removing need to unplug cables and phone lines 	- LAN cable	- Network point
			- USB to LAN converter	- Access to Internet via network through firewalls (if applicable)
Connection via Router (Wired connection required)		<ul style="list-style-type: none"> • Faster upload/download speeds • No cost of phone call to connect your machine • Secure to use on your network • Constant connection removing need to unplug cables and phone lines 	- LAN cable	- Network point
			- USB to LAN converter	- Access to Internet via network through firewalls (if applicable)

Some Information for your IT Department

Should connecting in this manner require you to engage your IT support, here is some basic information that may answer some of their questions:

- Constant connection does not integrate or embed an email client / server
- Constant connection will not allow third party applications to be loaded
- Constant connection will only use communication ports during communication with Pitney Bowes servers to complete funds downloads, transfer of usage data for INVIEW reporting, rate file updates, software and feature upgrades.

Depending on your network type, your Network Administrator may need to configure the network to support dynamic or static IP addressing and allow access to these ports to function:-

TCP 80 (http) TCP (443) TCP 21 (ftp) TCP 53 (DNS)



For more details on preparing your machine for installation, please download our helpful LAN connection guide.

Go to www.europe.pb.com/docs and enter the access code 8026. This guide gives much more information and specifics about which URLs are used and will give you all the information that you need to complete the installation when your machine arrives.



Use the USB connector supplied with your franking machine to stay in constant connection

“Constant connection will provide you with the tools to get most value from your franking machine without the costs associated with an analogue connection”