



Mailing

Openers & Folders

## DL75 Letter Opener

# Handle mail with greater speed, care and efficiency.

The DL75 Letter Opener from Pitney Bowes is a compact, automatic letter opener that can help your business:

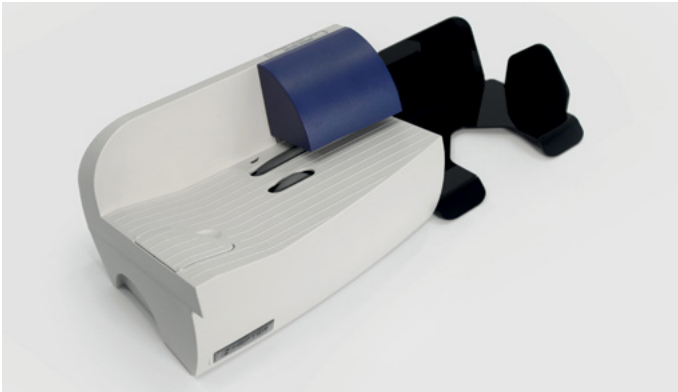
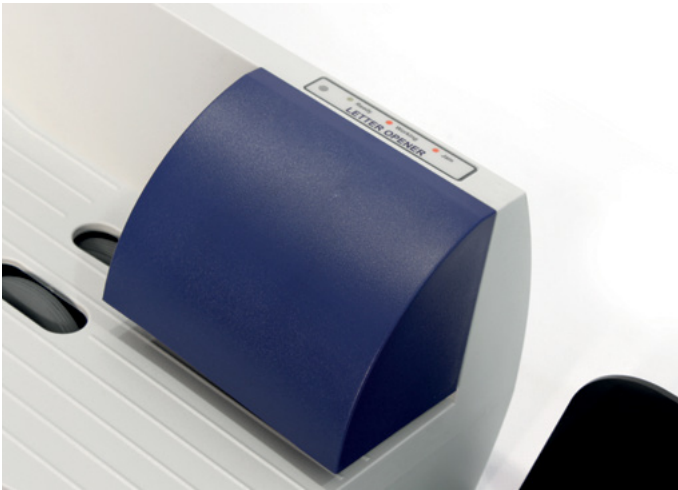
**Increase productivity:** Engineered with built-in slitting technology, the DL75 creates an incision in each envelope to virtually eliminate paper jams caused by envelope offcuts.

**Handle a wider range of envelopes:** This includes B4 Size, 250mm x 353mm and envelopes up to 4mm thick.

**Open letters at exceptional speeds:** The DL75 operates quietly at up to 300 letters per minute, and dispenses opened mail into its practical receiving tray—ready for onward distribution.



For more information, visit us online: [pitneybowes.com/uk](http://pitneybowes.com/uk)



#### Specifications:

Speed:	Up to 300 letters per minute
Envelope sizes:	Up to B4 250mm x 353mm
Maximum envelope thickness:	4mm
Physical dimensions:	180mm x 330mm x 230mm
Acoustical noise:	<70 dBA
Weight:	4.5Kg
Power supply:	100-240v AC- 50/60Hz
Environmental operating limits	
Humidity:	10% to 95%
Temperature:	10° to 35° (°C)

For more information, call 08444 992 992 or visit us online:  
[pitneybowes.com/uk](https://pitneybowes.com/uk)



**United Kingdom**  
Building 5, Trident Place  
Hatfield Business Park  
Mosquito Way  
Hatfield  
Hertfordshire AL10 9UJ  
ukenquiries@pb.com  
08444 992 992