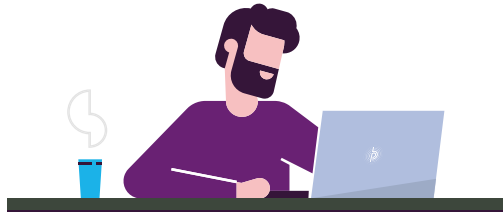


SendPro[®] Online

3 easy steps... to print a shipping label

click

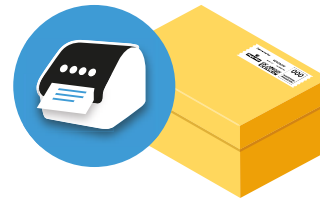
Access SendPro Online



print

Print shipping label

- With a shipping label printer from Pitney Bowes



or

- With your desktop printer¹



post

Sending options

- Drop it off at your local post office, sorting office or Parcelforce Worldwide Depot²
- or
- Have your parcel collected the next day³
- or
- Drop it off in a Royal Mail[®] parcel post box⁴



¹ Use almost any printer, just check your configuration before printing to make sure settings are not scaled.

² Check the Royal Mail or Parcelforce Worldwide website for your local drop off point.

³ This is an additional charge. Please make this selection within SendPro Online before printing the shipping label.

⁴ Royal Mail parcels only.

Print discounted postage wherever you are in seconds with SendPro Online[®].

Simply sign in on your computer. You can also print letter postage too.

pitney bowes 