

pitney bowes 

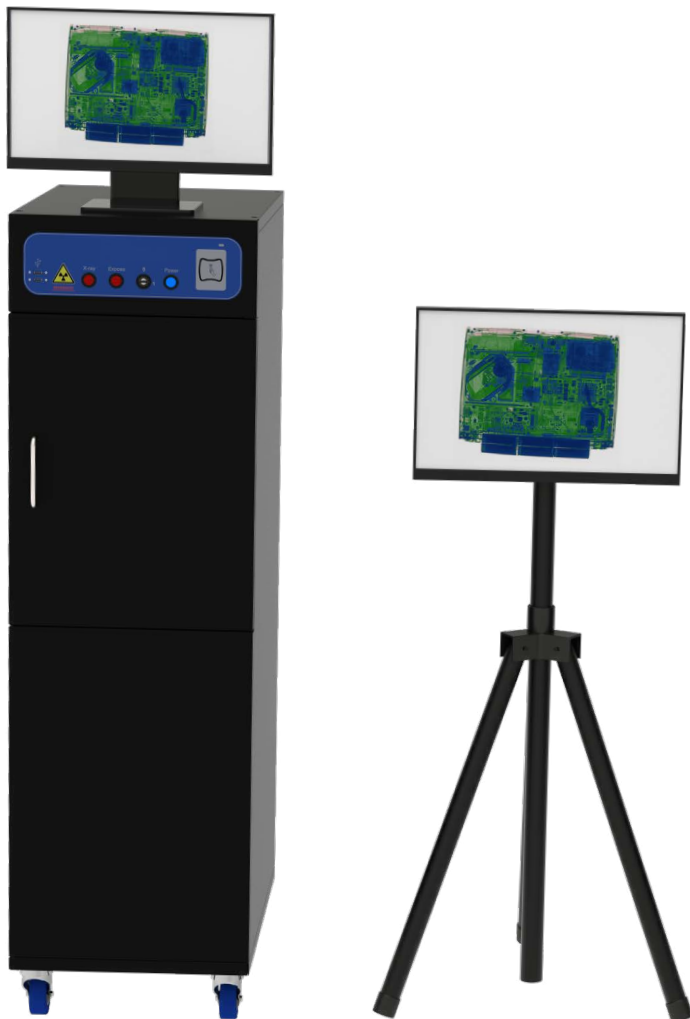
PB-TR15 & PB-TR40 +Smart Scan

Cabinet X-ray Scanners



The very latest generation PB-TR15 and PB-TR40 +Smart Scan cabinet scanners from Pitney Bowes, provide a new benchmark of threat detection and image management for compact cabinet scanners.

At the heart of the PB-TR15 and PB-TR40 +Smart Scan is a complete new software platform, managing the functionality and an intuitive user interface via a 22 inch touch screen monitor. The smart card login means the PB-TR15 and PB-TR40 +Smart Scan can be configured to enable data collection of individual user sessions further enhancing the effectiveness of the operators.



The PB-TR15 is our compact X-ray scanner with impressive detection capabilities - with its small footprint, low maintenance costs and a host of detection features, the PB-TR15 +Smart Scan is the scanning solution of choice.

The PB-TR40 is the largest cabinet scanner in the range, the generous chamber can accommodate mail sacks, large boxes and courier deliveries, with its one touch operation the PB-TR40 allows rapid processing of scanned items all within a compact footprint.

We see things differently

The in-built enhancement tools of the PB-TR40 enable the captured image to be further investigated. The remote networking capabilities make for easy sharing and storage of images and can be utilised as part of the organisations escalation process. With Enhanced Powder Detection (EPD™) software as standard, powder based threats items can also be interrogated.

A history of delivering

As a leading supplier of safety and security equipment, Pitney Bowes demonstrates has provided a wide range of threat detection equipment to key critical infrastructure clients. Creating innovative solutions to combat a range of threats, including homemade and Improvised Explosive Devices (IED) as well as biological threats both chemical, powder and even hybrid warshipping type hacking devices.

Features and Benefits

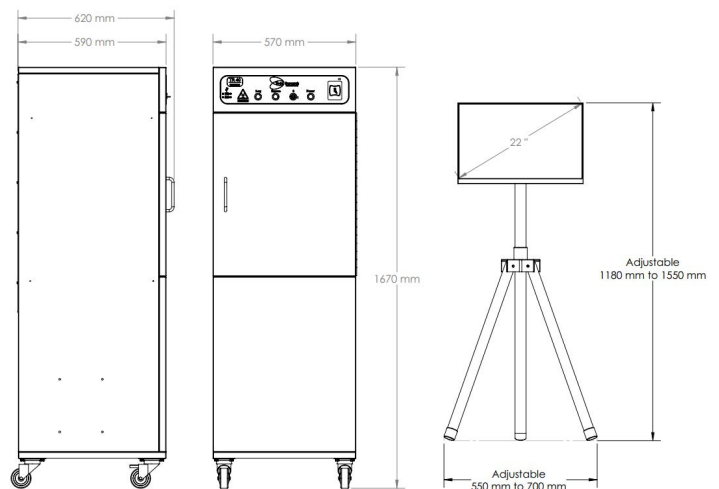
Image enhancement	Benefit
EPD™ Enhanced Powder Detection	Heightened ability to identify threats conveyed via powder based elements.
Digital camera and powerful generator	Hi resolution images with increased ability to detect smaller threat items.
Negative image function	Identification of high density materials. e.g. (metal) shown up white against a black background.
High density alert (PB-TR15)/ Enhancement (PB-TR40)	Facilitates the identification of materials such as plastic explosives/incendary materials.
3 point density alert (PB-TR15)/ enhancement (PB-TR40)	Highlighting elements of 'suspect devices', including individual components e.g. detonators & batteries.

Operating system	
Smart card login	Designated access with record of all operator sessions.
Touch screen interface	Quick selection of tools for rapid verification that objects are Safe or Suspect.
Session data	Manage operator usage and record of suspect items.
Administrator function	Levels of access and functionality can be set by Administrator.
Operator icon toolbar (PB-TR40 only)	Quick selection of tools to verify if object is "Safe or Suspect" then to store or share the image.

Image storage & sharing	
Export images	A hard copy library can be created for reference or to aid image share.
Automatic Image archiving	Enables a second opinion, and quick escalation to key decision makers.
Image email functionality	Cross reference and accelerated referral to security personnel.

Cabinet X-ray Scanners can be used for multiple applications:

- Mail rooms
- Executive mail screening
- Reception areas (scanning of post)
- Goods in (screening of parcels)
- Loss prevention
- Contraband detection



Product Specification

Image and unit performance

Touch screen LCD 22" monitor

Resolution 1920 x 1080 pixels

Wire resolution: 36 AWG

Steel penetration: 3mm

X-ray generator

70KV measured at target

Screen 4.0mA

Operating requirements & environment

Single phase 115V/230V, 50/60 Hz,

350W / 1180VA

Operating temp.: 5°C to +40°C

Storage temp.: -15°C to +50°C

Relative humidity: 85% non condensing

Supplied with 2m power cable

Health & safety and compliance

All Pitney Bowes equipment complies with applicable International health & safety regulations

Ionising radiation regulations 2017 (IRR17) leakage dose at outer surface <1.0µSv/h

Complies with European Directives

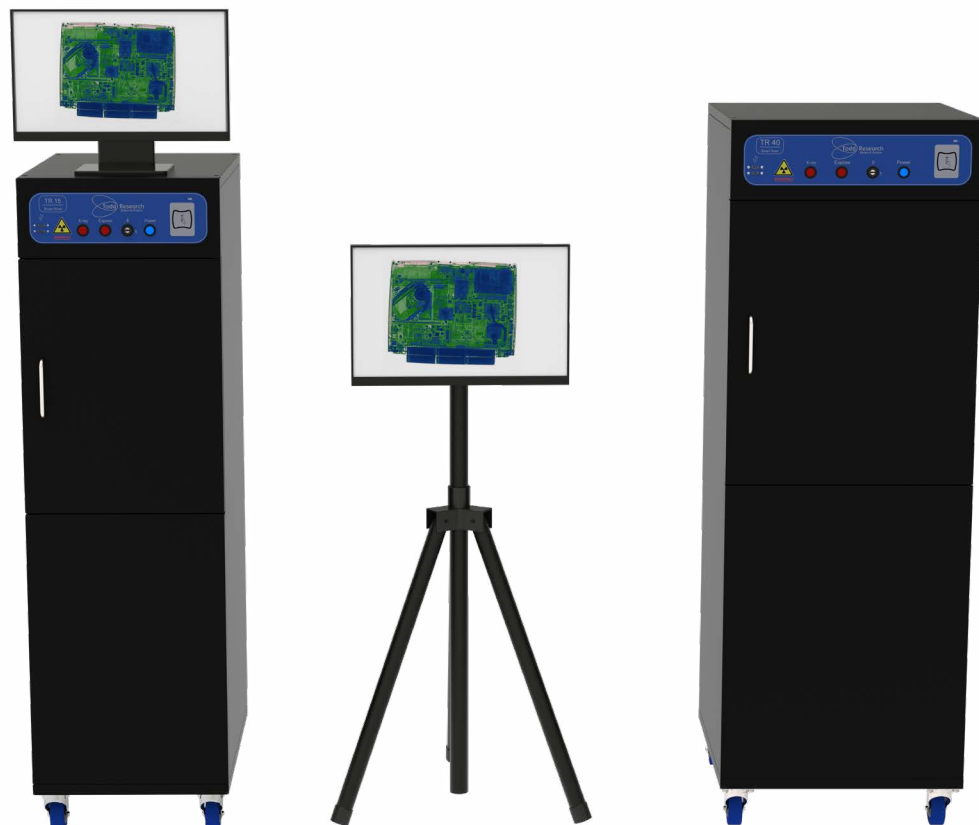
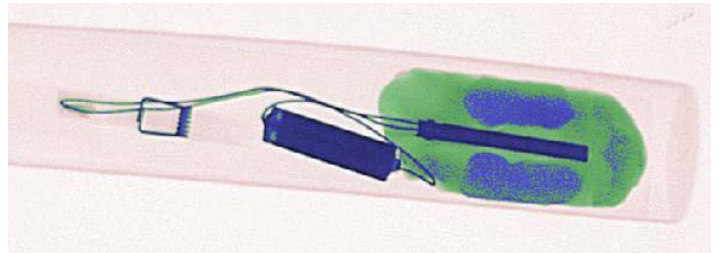
Electromagnetic compatibility (EMC) 2014/30/EU

Low voltage (LVD) 2014/35/EU

Complies with United Kingdom regulations

S.I. 2016 No. 1091 Electromagnetic compatibility Regulations 2016

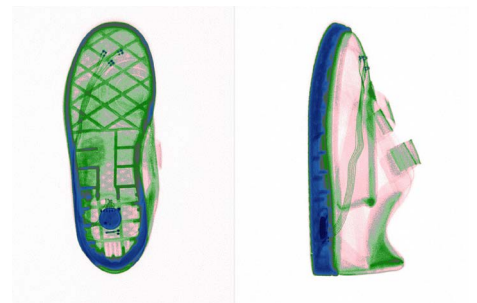
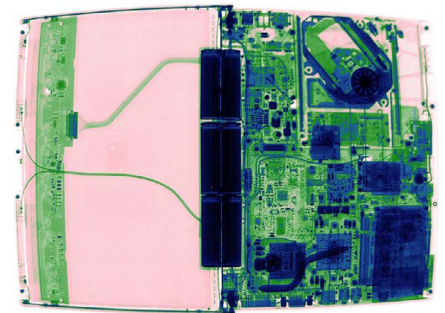
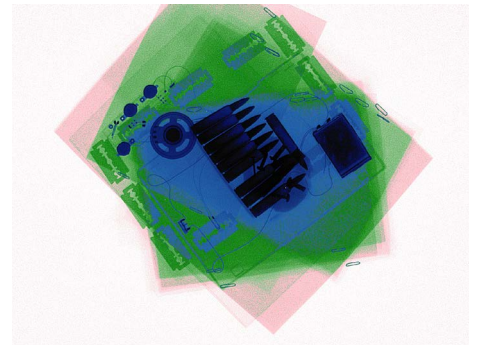
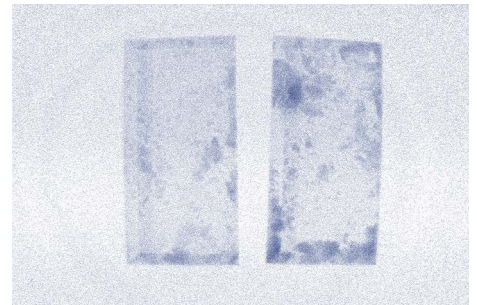
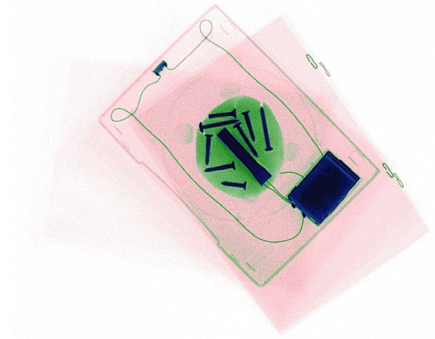
S.I. 2016 No. 1101 Electrical Equipment (Safety) Regulations 2016



General Dimensions

	PB-TR15 + Smart Scan	PB-TR40 + Smart Scan
Dimensions	Cabinet	Cabinet
Height	1540mm	1670mm
Weight	455mm	570mm
Depth	670mm	590mm
Net weight	170kg	182kg
	Inspection chamber	Inspection chamber
Height	535mm	600mm
Weight	440mm	555mm
Depth	580mm	505mm
	Image area	Image area
Width	380mm	480mm
Depth	520mm	440mm
	Door opening	Door opening
Height	530mm	600mm
Weight	365mm	480mm

- High quality digital camera and enhanced X-ray generator delivers superior image quality for greater detection.
- Image storage locally or onto an external hard drive or network for easy reference and verification.
- Operators are assigned a login, management can map who is using the scanner and when.
- Image email functionality enables escalation of potential suspect images to security professionals.
- Enhanced EPD™ software allows greater recognition of “powder” threats
- User friendly touch screen interface providing access to all enhancement tools enabling rapid image
- All user data - date, operators login, name, session time, number of exposures made, log off time etc are captured in the Microsoft Access database processing.
- 3 point density alert - operator can define the elements of suspect devices, such as metal components, e.g. detonators and batteries
- Compliance with Ionising Radiation Regulations 2017 (IRR17).
- WIFI Ready (can be added as an optional extra).
- Monitor stand included with PB-TR40 +Smart Scan, optional extra with PB-TR15 +Smart Scan



United Kingdom

Pitney Bowes Limited
Langlands House
CM19 5QA, Harlow

For more information,
visit us online: pitneybowes.com/uk