



PB-TR5335

# Conveyor X-ray Scanner





The PB-TR5335 is a compact but powerful X-Ray Inspection System that provides more power than any system in its cabinet size. Capable of fitting through standard doorways, the system's small footprint allows for easy relocation and installation, while the 160kV generator provides improved detection in small objects, such as bags, backpacks, and mail parcels.

Combined with the best-in-class software, the PB-TR5335 helps operators quickly identify threats using 6-color material discrimination and high-contrast filters that provide alternative perspectives on scanned objects. Superior image quality ensures higher throughput, making the PB-TR5335 the ideal space-saving solution for sites that require powerful protection against weapons, narcotics, and contraband.

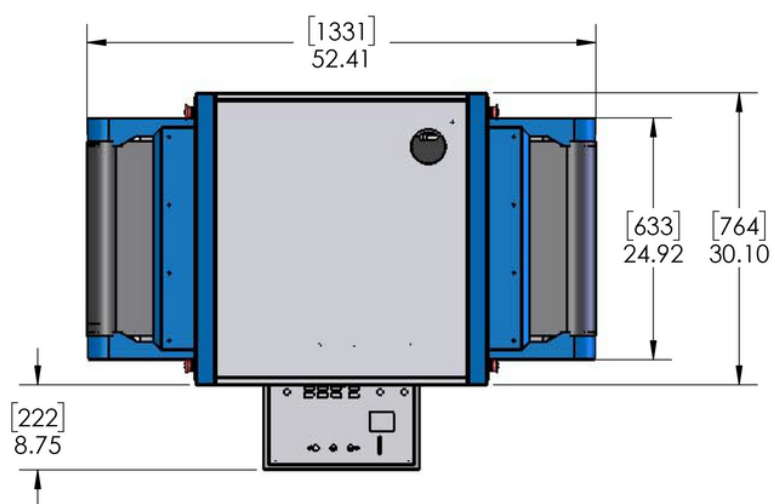
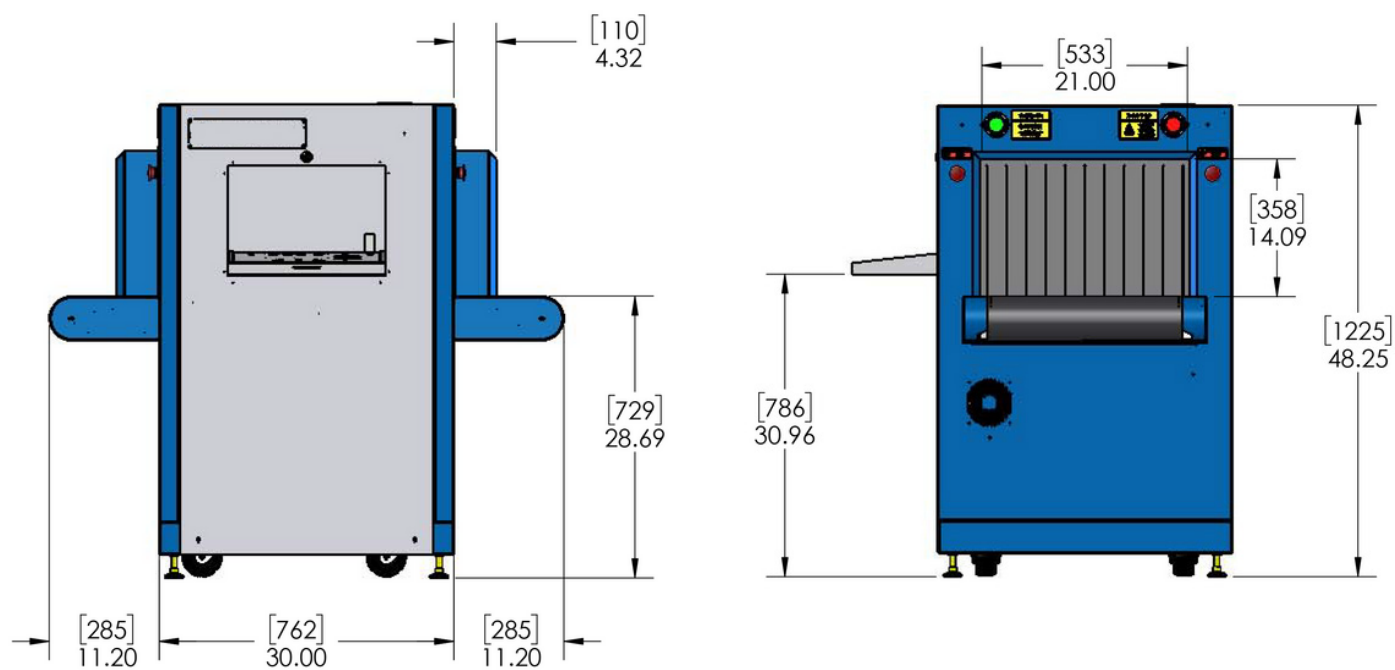
Conveyor x-ray inspection system for the detection of metal & organic objects, weapons, explosives, liquids, narcotics, primers and dangerous items at checkpoint security:

- Law enforcement
- Government buildings
- Embassies & consulates
- VIP residences
- Hotel complexes
- Shopping centres
- Schools & universities
- Public event venues & stadiums



# Features and Benefits

Standard features	Optional features
6 colour Imaging	Barcode scanning
Colour and black/white	Density alert
Imaging geometric lounge	Local language
Distortion correction	Safe passage
High penetration function	Computer based training
Organic/inorganic imaging	Screener assist software
Picture perfect	Test case
Pseudo colour	Threat image projection (TIP) software
Real-time image	24" flat panel monitor
Manipulation reverse	Custom paint
Monochrome	Dual monitors (19" or 24")
Atomic z-number	Environmental kit
Measurement	Entry/exit roller tables
Material discrimination	Footmat operator interlock
9 quadrant zoom	Heavy duty casters
Continuous scanning	Long conveyor
Continuous zoom up to 64x	Mobility kit
Vertical zoom panning	Radiation meter
Auto image archiving	Remote workstation configuration
Image Review	Uninterruptible power supply (UPS)
Save image (RGB)	
Image annotation	
JPEG conversion	
Print image capable	
Multi-tier accessibility	
Network ready	
Real-time self diagnostics	



# Product Specification

## General specifications

Tunnel Size: 53.3cm x 35.8cm

(WxH) 21.0" x 14.1"

Dimensions: 133.1cm x 76.4cm x 122.5cm

(LxWxH) 52.4" x 30.1" x 48.2"

Net weight: 297kg (654lbs)

Shipping weight: 365kg (804lbs)

Conveyor speed: 23cm/s (45ft/min) forward or reverse 72.9cm

Conveyor height: (28.7") from floor

Conveyor capacity: 165kg (364lbs) evenly distributed load

## Technical

Wire resolution: 40 AWG typical, 38 AWG standard

Steel penetration: 39mm typical, 37mm standard

## X-ray generator & image performance

Voltage: 160kV, Operating at 150kV

Tube current: 0.7mA

Cooling: Sealed Di-Electric Oil Bath with Forced Air

Duty cycle: 100%, no warm-up procedure required

Beam direction: Diagonally upward

## Computer & video

Platform: Windows OS

Memory: 4 GB RAM

Storage capacity: 1 TB HDD, 240 GB SSD

Power conditioner: Automatic voltage regulator (AVR), 600 VA

Display type: Single 19" flat panel colour monitor

Display resolution: 1280 x 1024; 24 Bit/Pixel colour

## Environmental

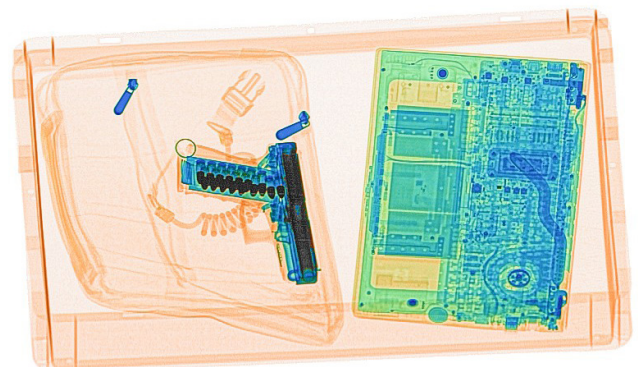
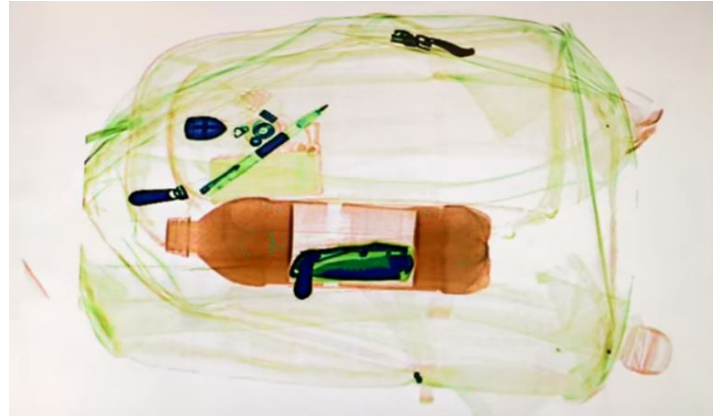
Operating temperature: 0°C to 40°C \ 32°F to 104°F

Storage temperature: -20°C to 60°C \ -4°F to 140°F

Humidity: Up to 95% non-condensing

## Electrical

System power: 110 VAC +/- 10% 50/60Hz, 15 Amp Max  
220VAC +/- 10% 50/60Hz, 10 Amp Max



**United Kingdom**

Pitney Bowes Limited  
Langlands House  
CM19 5QA, Harlow

For more information,  
visit us online: [pitneybowes.com/uk](https://pitneybowes.com/uk)