



PB-TR6040 & PB-TR6040SE

# Conveyor X-ray Scanner



The PB-TR6040 is a high-performance X-Ray Inspection System ideally suited for small checkpoints, screening backpacks, purses, and parcels. With thousands of installations at airports and critical infrastructure facilities worldwide, the PB-TR6040 is the most sold critical infrastructure product in the x-ray market.

With proven field reliability and unsurpassed image quality, the PB-TR6040 represents the best in optimized screening technology. High-resolution scans and best-in-class software allows operators to recognize objects, identify materials, and isolate threats with greater speed and accuracy.

Optional AI software available on both the PB-TR6040 and PB-TR6040SE, Syntech SOLUTION™, detects guns and knives with incredible precision and accuracy. Fully-integrated, Syntech SOLUTION™ automatically stops the belt when it detects a threat and isolates it with a colored box on-screen, for an unmatched level of safety.



PB-TR6040

Conveyor x-ray inspection system for the detection of metal & organic objects, weapons, explosives, liquids, narcotics, primers and dangerous items at checkpoint security:

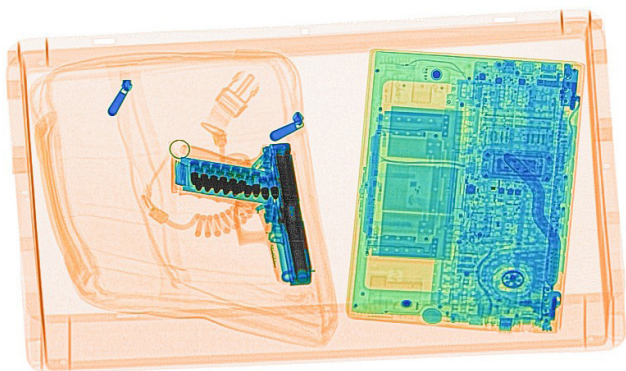
- Law enforcement
- Government buildings
- Embassies & consulates
- VIP residences
- Hotel complexes
- Shopping centres
- Schools & universities
- Public event venues & stadiums



# Integrated AI

Unparalleled security screening for modern threat detection.

	Guns	Knives	Shielded objects	Liquid containers	Lithium batteries
Lite	✓	✓			
Advanced	✓	✓	✓		
Advanced with liquids and lithium batteries	✓	✓		✓	✓



- Threats automatically highlighted with Yellow, Green, Pink or Blue rectangles
- Detection for shielded objects, lithium batteries or liquid containers available upon request
- No additional personnel required
- AI Software upgrade currently available for conventional x-ray systems
- Compatible with other manufacturers x-ray systems

## PB-TR6040SE

The PB-TR6040SE is a uniquely mobile X-Ray Inspection System designed for rapid deployment, with shock-absorbing wheels, stainless-steel handles, collapsible roller tables, and a foldable screen. The PB-TR6040SE is an ideal solution for Special Events, schools, and sports stadiums where effective threat detection requires power, mobility, and high throughput. The spill resistant belt protects the machine's electronics, so users do not have to remove liquid containers from their bags before passing them through the system.

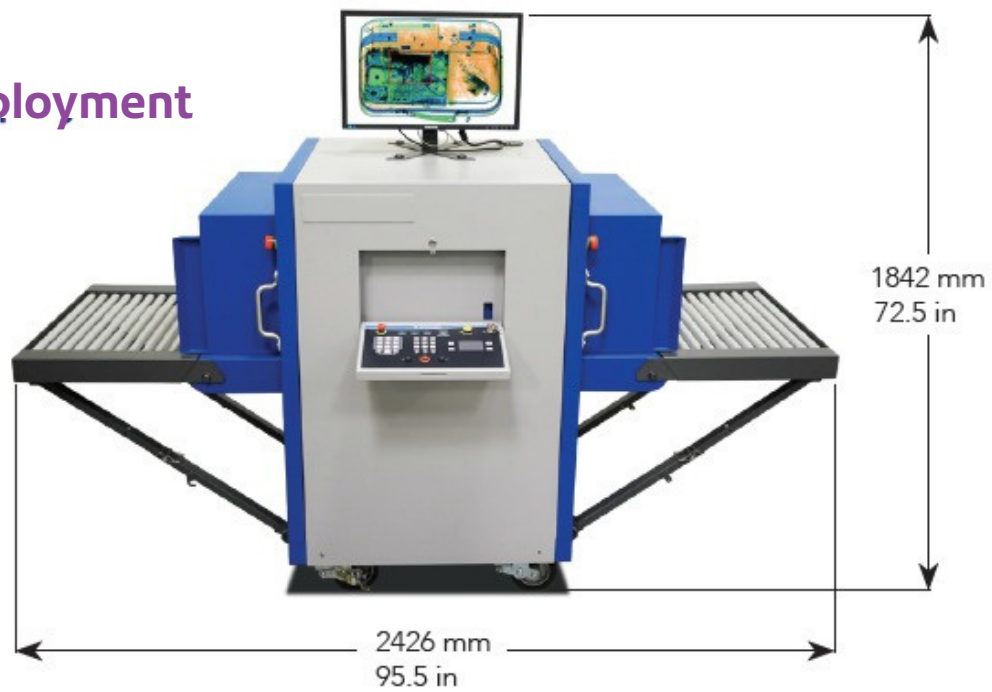


PB-TR6040SE Version with  
mobile deployment features

## Compact storage



## Quick deployment



# Product Specification

General specifications	PB-TR6040	PB-TR6040SE
Tunnel Size:	60.0cm x 40.0cm (WxH)	60.0cm x 40.0cm (WxH)
Dimensions (LxWxH)	143.3cm x 84.6cm x 124.5cm	Deployed: 242.6cm x 80.4cm x 184.2cm Folded: 146.8cm x 80.4cm x 145cm
Net weight: 297kg (654lbs)	370kg (820lbs)	440kg (970lbs)
Shipping weight:	490kg (1080lbs)	558kg (1230lbs)
Conveyor speed:	23cm/s (45ft/min) forward or reverse	23cm/s (45ft/min) forward or reverse
Conveyor height:	71.6cm (28.2") from floor	83.9cm (33.03") from floor
Conveyor capacity:	165kg (364lbs) evenly distributed load	165kg (364lbs) evenly distributed load
<b>Technical</b>		
Wire resolution:	40 AWG typical, 38 AWG standard	40 AWG typical, 38 AWG standard
Steel penetration:	39mm typical, 37mm standard	39mm typical, 37mm standard
<b>X-ray generator &amp; image performance</b>		
Voltage:	160kV, Operating at 150kV	160kV, Operating at 150kV
Tube current:	0.7mA	0.7mA
Cooling:	Sealed Di-Electric Oil Bath - Forced Air	Sealed Di-Electric Oil Bath - Forced Air
Duty cycle:	100%, no warm-up procedure required	100%, no warm-up procedure required
Beam direction:	Diagonally upward	Diagonally upward
<b>Computer &amp; video</b>		
Platform:	Windows OS	Windows OS
Memory:	4 GB RAM	4 GB RAM
Storage capacity:	1 TB HDD, 240 GB SSD	1 TB HDD, 240 GB SSD
Power conditioner:	Automatic voltage regulator (AVR),	Automatic voltage regulator (AVR), 600
Display type:	600 VA 19" flat panel colour monitor	VA Single 24" flat panel colour monitor
Display resolution:	1280 x 1024; 24 Bit/Pixel colour	1920 x 1200; 24 Bit/Pixel colour
<b>Environmental</b>		
Operating temperature:	0°C to 40°C \ 32°F to 104°F	0°C to 40°C \ 32°F to 104°F
Storage temperature:	-20°C to 60°C \ -4°F to 140°F	-20°C to 60°C \ -4°F to 140°F
Humidity:	Up to 95% non-condensing	Up to 95% non-condensing
<b>Electrical</b>		
System power:	110 VAC +/- 10% 50/60Hz, 15 Amp Max 220VAC +/- 10% 50/60Hz, 10 Amp Max	110 VAC +/- 10% 50/60Hz, 15 Amp Max 220VAC +/- 10% 50/60Hz, 10 Amp Max

**United Kingdom**

Pitney Bowes Limited  
Langlands House  
CM19 5QA, Harlow

For more information,  
visit us online: [pitneybowes.com/uk](https://pitneybowes.com/uk)