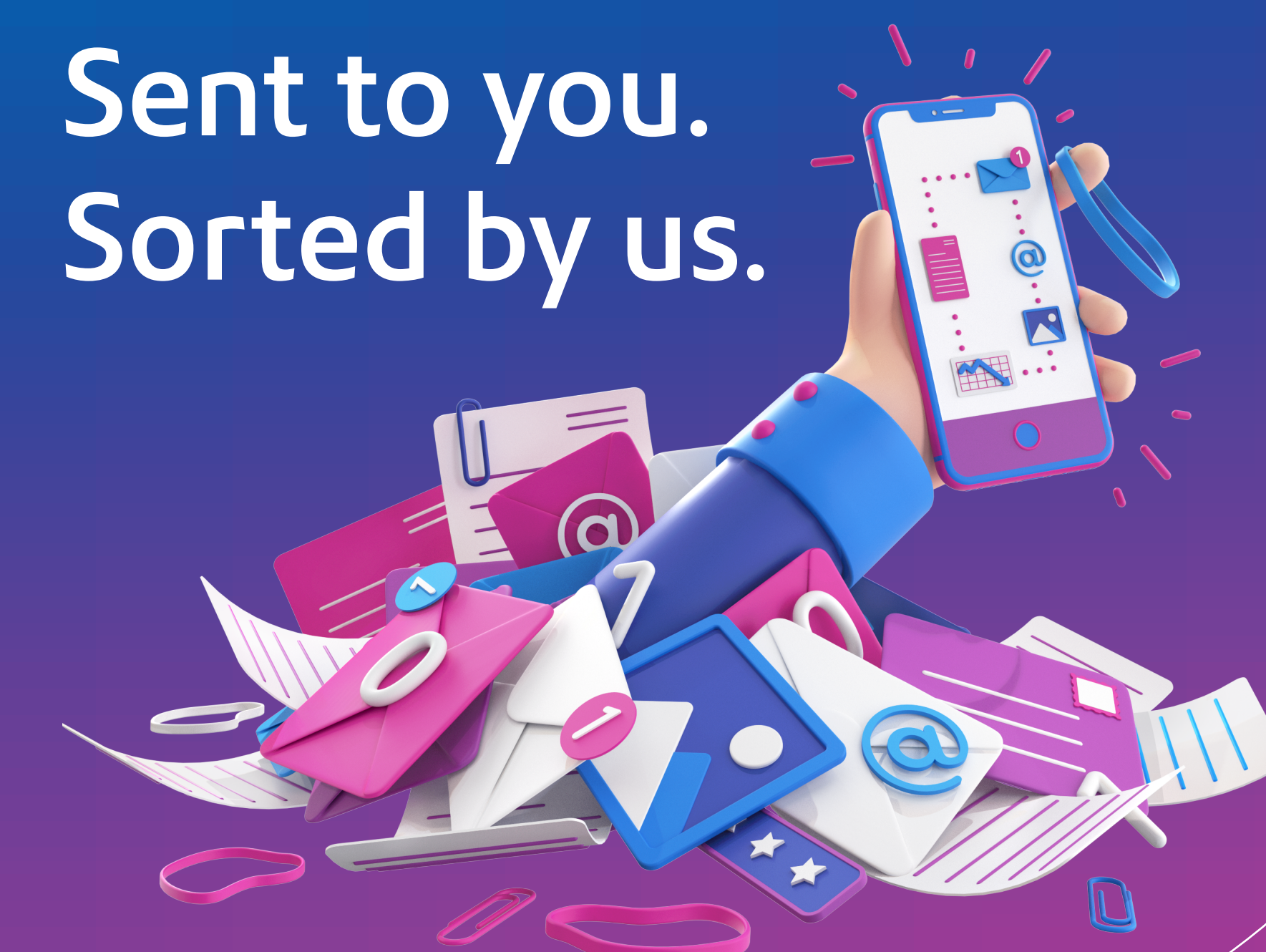


Inbound document and data workflow solution

Seamlessly transform Inbound document and data processes. **Sent to you. Sorted by us.**

Shifting to digital for managing and processing inbound mail can enable greater flexibility, resilience and visibility. There are typically four key challenges organisations face when they consider transforming complex business mail processes.

**Sent to you.
Sorted by us.**



Realising Digital Transformation

Digitising mail processes can enable collaboration, protect data and drive growth.

76%

of executives say experiences must bring technology and people more closely together¹

Digital delivery of services impacts

26%

of jobs and increases the need to collaboration²

45%

of digitally transformed businesses also reported higher net revenue growth³

Digital transformation. Sorted by us:

We can help automate key mailing processes, implement truly digital workflows, and improve IT simplicity

Ensuring operational excellence

Transforming Inbound mail and document workflows can enable wider operational excellence.

65%

the population now has some form of data protection vs just 10% in 2020⁴

37%

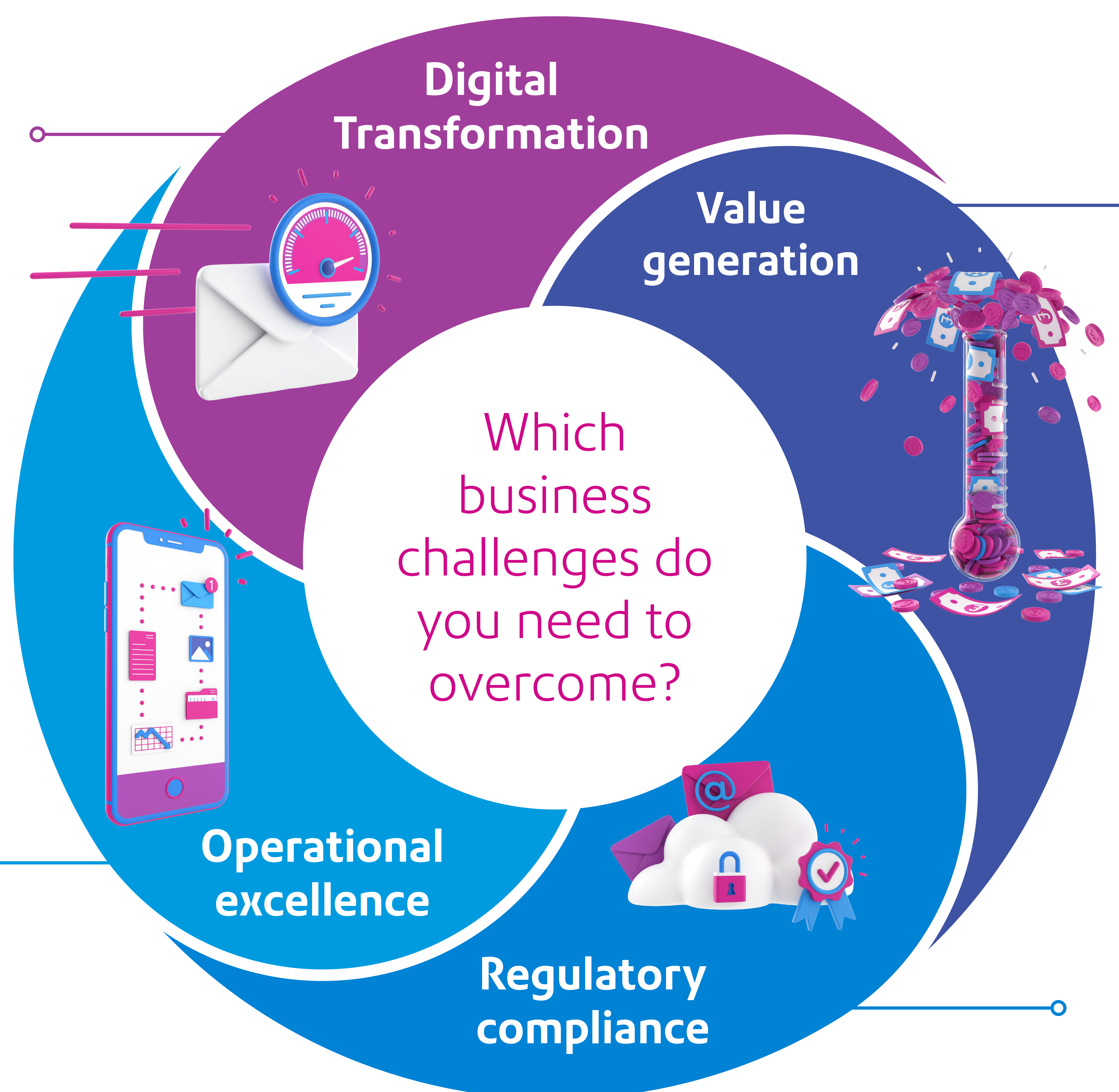
of businesses consider a lack of data biggest barrier in identifying risk⁵

39%

of UK businesses report having cyber security breaches or attacks in the last year⁶

Operational excellence. Sorted by us:

We can help build resilience to drive growth, be more efficient, and become more customer centric



Enabling value generation

Becoming digital first can open opportunities, create new value and increase agility.

74%

are investing in on-demand digital services to increase responsiveness and speed⁷

87%

of executives plan to prioritize enterprise agility over the next two years⁸

60%

of businesses have accelerated process automation⁹

Value generation. Sorted by us:

We can help drive a competitive advantage, increase customer satisfaction, and enable automation

Supporting regulatory compliance

Compliance and data protection regulations are more important than ever – and more complex.

34%

of leading businesses said that their customer journey was a top priority for 2020¹⁰

End-to-end transformation can increase productivity by up to

90%¹⁰

Digital leaders achieve

1.8x

higher earnings growth than slow adopters¹¹

Regulatory compliance. Sorted by us:

We can help total compliance scrutiny and visibility, increased data security, and reduced security risk

¹ <https://accntu.re/3gH1Sg8>

² <https://bit.ly/3sXPjQ5>

³ <https://www2.deloitte.com/us/en/insights/topics/digital-transformation/digital-transformation-survey.html>

⁴ <https://www.delltechnologies.com/enus/perspectives/digital-transformation-index.htm>

⁵ <https://www.ibm.com/thought-leadership/institute-business-value/report/covid-19-future-business>

⁶ <https://www.ibm.com/thought-leadership/institute-business-value/report/covid-19-future-business>

⁷ <https://bit.ly/2QCtQz0>

⁸ <https://refinitiv.com/3ntVpXb>

⁹ <https://bit.ly/3gPAAdp>

¹⁰ <https://business.adobe.com/uk/resources/reports/digital-trends-2020.html>

¹¹ <https://mck.co/3u1IC0v>

¹² <https://on.bcg.com/3u1FUbo>

Speak to us at Pitney Bowes today about how we can transform complex business mail processes to help you overcome your biggest challenges.

0800 748 639
sales.enquiries@pb.com