

Pitney Bowes Global Services

# Proven solutions. Faster results.

Precisely what your business needs.

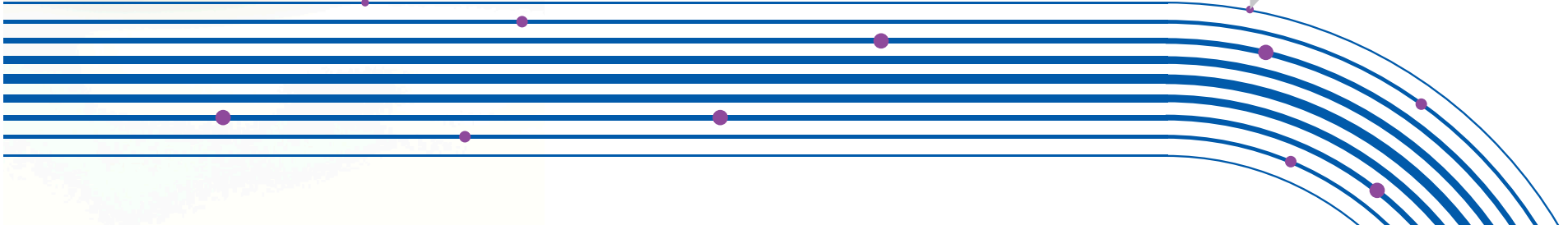


We're focused on your success.

In this complex and always evolving world of commerce, it's critical that the investments you make in your business deliver the results you need in the quickest amount of time.

Achieving faster, more impactful results is precisely what Pitney Bowes Global Services does...and we can do it for you, too.

Our team provides consulting, implementation support, analytics, maintenance and managed services, all customized to meet your unique needs, now and in the future.



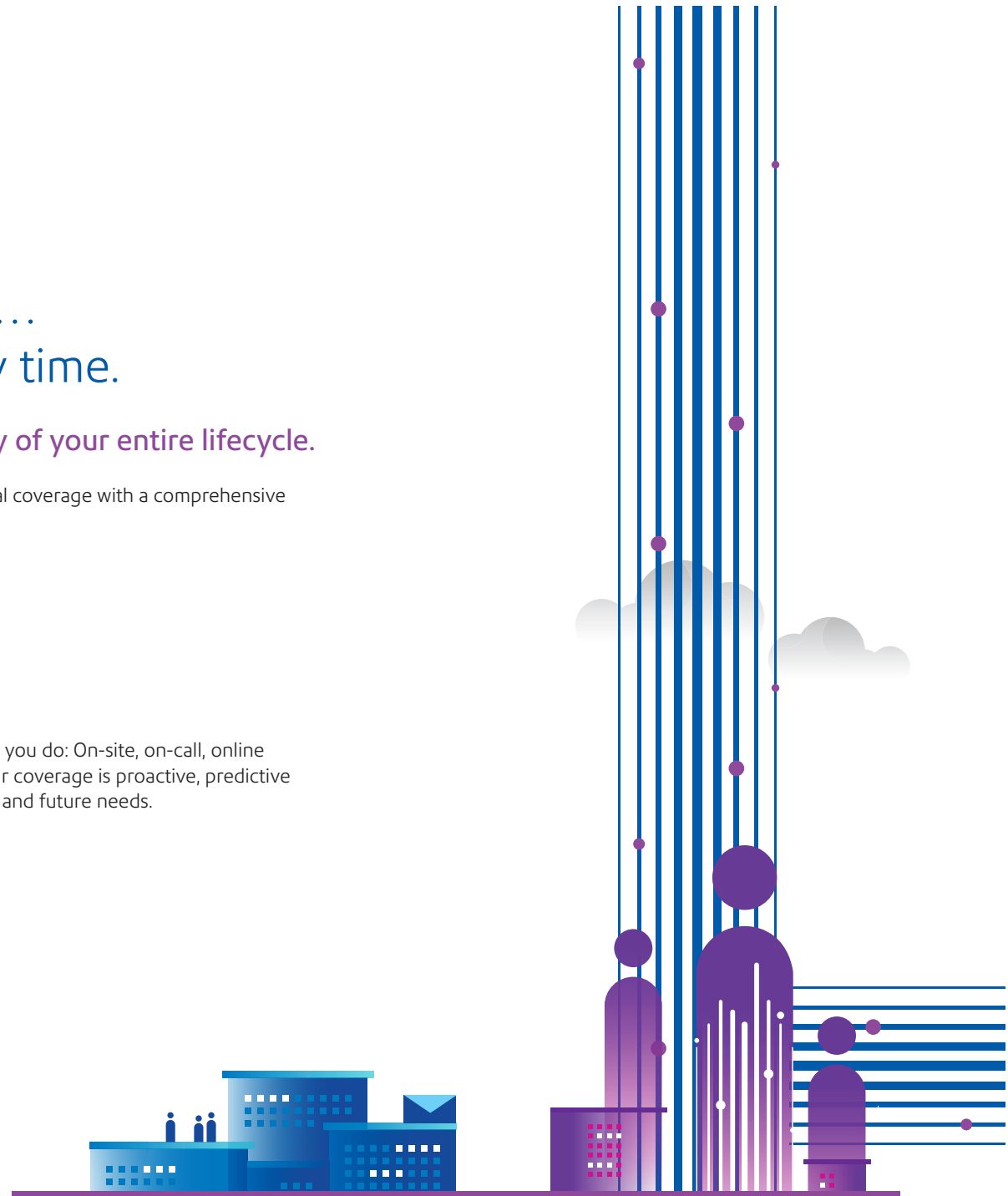
# We're here to help... and it shows, every time.

## Coverage: Improve the quality of your entire lifecycle.

Pitney Bowes Global Services offers full global coverage with a comprehensive range of services and support, including:

- Consulting
- Implementation support
- Analytics
- Maintenance support
- Managed services
- Training

We've designed our services to work the way you do: On-site, on-call, online and/or machine-to-machine. What's more, our coverage is proactive, predictive and personalized in meeting your immediate and future needs.





## We provide superior accuracy and precision.

Pitney Bowes Global Services is built on the foundation of providing lasting impact to our clients. Our proven methodologies are designed to meet the specific needs of your organization.

## Our expertise maximizes performance.

Our industry experience provides unique insights into best practices based on real user data. The knowledge of our 3,100 dedicated employees, including world-class consultants and engineers, enables us to effectively mitigate implementation risks and optimize your organization's performance.

## We're not satisfied until you are.

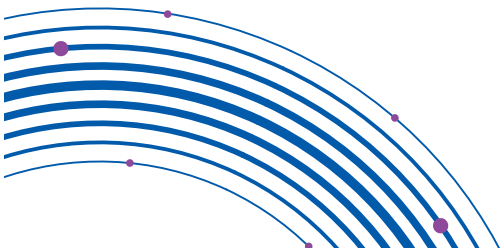
We're always looking for—and implementing—new ways to improve our service. In over 1.2 million annual engagements, we've achieved a 95% Enterprise Client Satisfaction rating and built long-term relationships with many global organizations. They've come to expect Pitney Bowes Global Services to go above and beyond...and so can you.

# Consulting.

Optimize your business by reducing costs and improving operational efficiencies with our solutions. Plus, we'll help you manage risk and ensure regulatory compliance.

Our services span across industries and departmental functions, powering physical and digital solutions that enable commerce.

You can maximize your investment in our solutions through extensive knowledge transfer and technology adoption support from our team. Pitney Bowes Global Services consultants can help transform your business through superior technical and business solutions consulting, as well as solutions designed specifically to address the needs of your business.







## Implementation support.

**Design, build and deploy new systems—and minimize project risks—with Pitney Bowes Global Services implementation services.**

We help you ensure the fastest time-to-value and return on investment with our solutions. Whether you are deploying an end-to-end implementation or a specific service, we integrate people, processes and technology at any level with our proven methodologies and strong project governance.

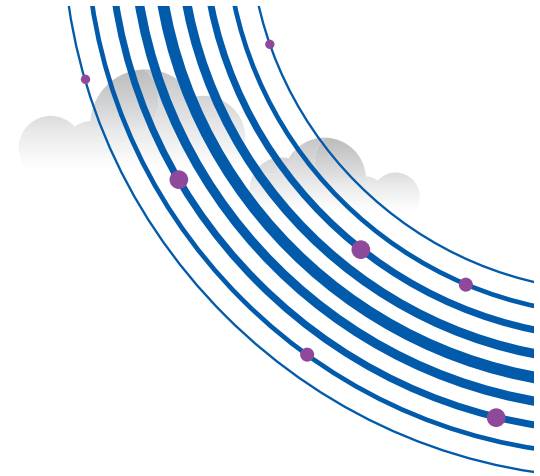
Our team has earned extensive certifications and credentials. We have the domain expertise that enables us to implement our solutions in complex environments with multiple integration points.



## Analytics.

**Craft effective business strategies and make ideal business decisions through increased insight and accuracy enabled by Pitney Bowes Global Services analytics.**

Our powerful techniques, expertise and solutions help quantify, predict and improve business performance. With unparalleled industry knowledge and powerful data models, we produce precise analytics for comparison and optimization against key performance indicators and industry benchmarks.



## Maintenance support.

**Achieve higher systems availability and performance with our integrated maintenance and technical support.**

Our flexible service-level options are designed to support your business needs, prevent problems and quickly resolve any issues. Using the latest industry tools and analytics, our team of certified technicians monitors your systems to rapidly diagnose and repair any issue.





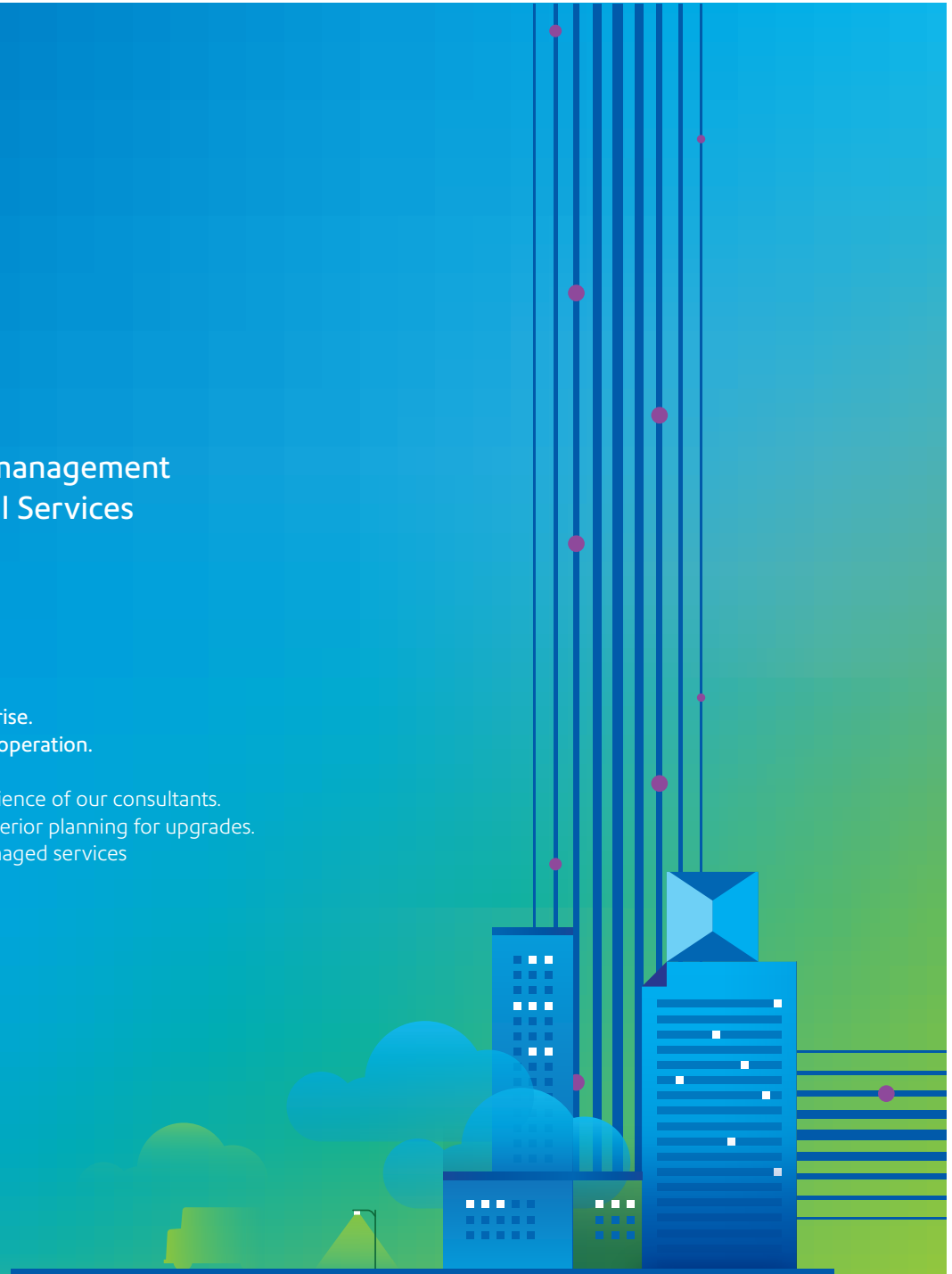
## Managed services.

Focus on your business and leave the management of your systems to Pitney Bowes Global Services managed services.

**Our team:**

- Ensures high availability and performance.
- Implements necessary upgrades.
- Ensures regulatory compliance.
- Helps extend and evolve systems across your enterprise.
- Provides 24/7 global support and managed services operation.

No one can match the extensive specialized product experience of our consultants. Plus, our vast knowledge of product roadmaps ensures superior planning for upgrades. Built around your needs, Pitney Bowes Global Services managed services can be provided on- or off-premise, as well as in the cloud.





## Training.

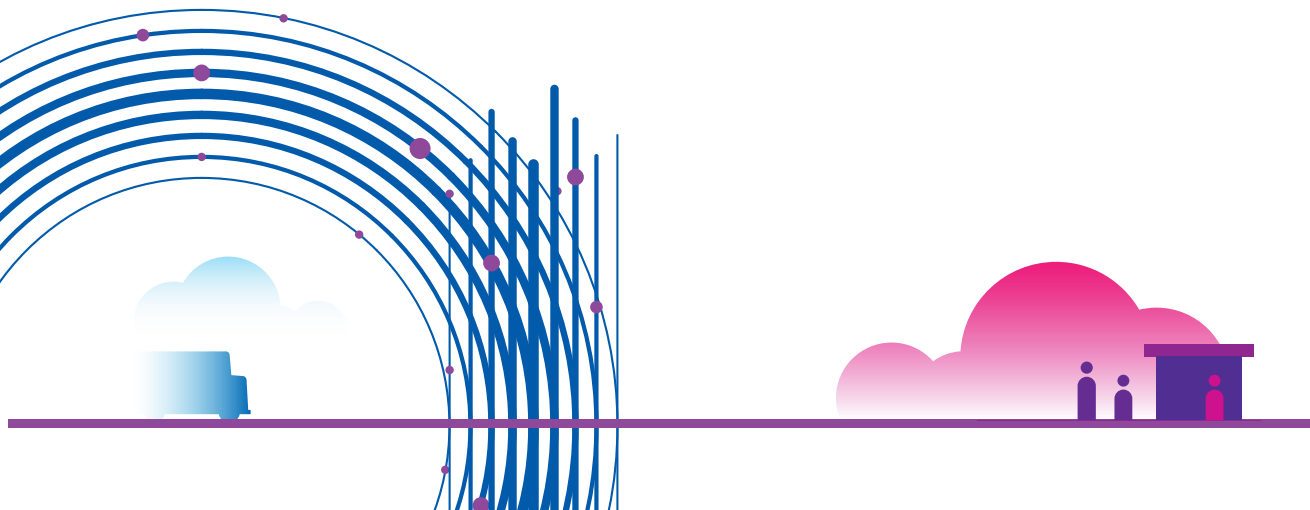
Look to Pitney Bowes Global Services to help your organization improve skills, learn new applications and work more efficiently with Pitney Bowes products and solutions.

Our courses are ideal for users at any level and can be tailored to individual or organizational needs. Plus, we'll cater to your preferred format, whether it be instructor-led online, at your site or at a Pitney Bowes training center. Can't dedicate time? We also offer self-paced, web-based options for your convenience.

## We're here to help.

In everything we do as Pitney Bowes Global Services, we deliver accuracy and precision to drive meaningful impact.

Our comprehensive coverage, innovative methodology and unparalleled knowledge help clients navigate the complex and always evolving world of commerce. By working together, we'll help you achieve more with your existing operations.







**United States**

3001 Summer Street  
Stamford, CT 06926-0700

For more information,  
visit us online: [pitneybowes.com](http://pitneybowes.com)