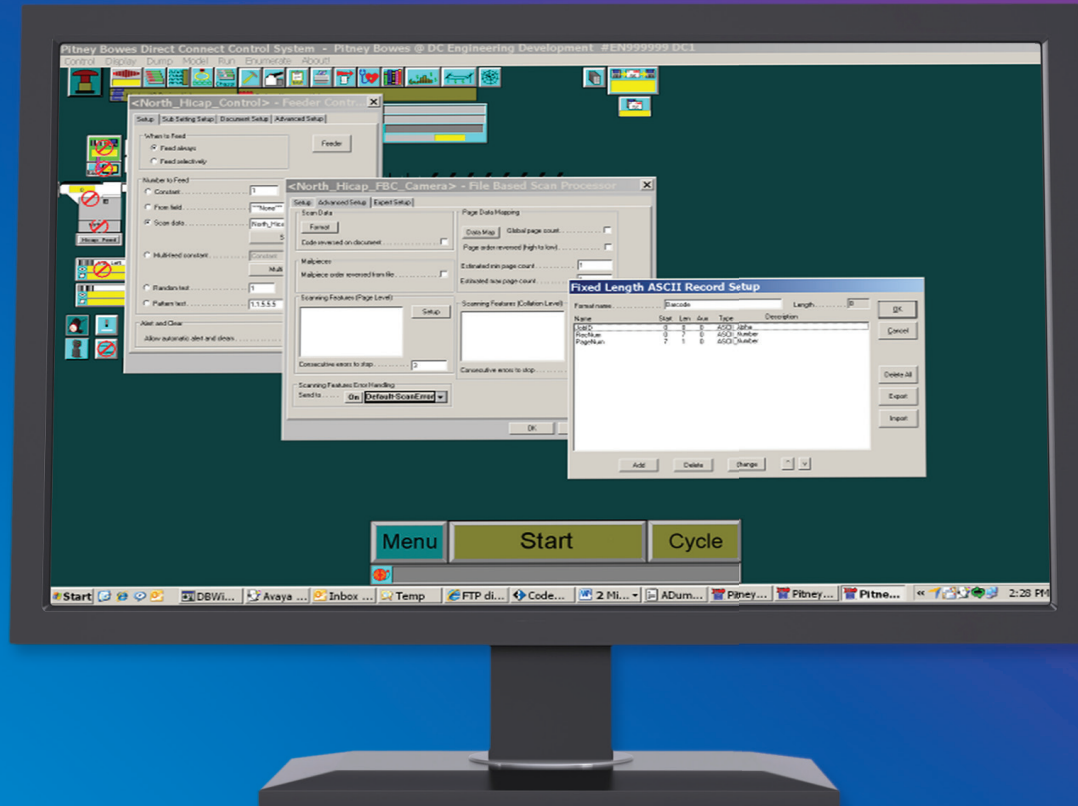


Job application management

Providing flexibility in handling new and existing jobs

Job application management



Adjusting the scanning modification for an application.

What is important to you?

Some questions to consider:

- Are you looking for more flexibility in handling new and existing jobs in your operation?
- Do you have client jobs that you would like to run on several different machines within your environment?
- Do you need the flexibility to make prompt changes within Direct Connect and test them thoroughly prior to running live work?
- Do your print applications or scanning definitions change from time to time?
- Do you risk missing an SLA commitment if an operator cannot resolve an application setup issue?

Job applications are at the core of your business. Job application management includes any direct connect software configuration modifications to existing applications onsite or the introduction of new applications required to be setup and tested on your Pitney Bowes inserter.

Demonstrating to clients that you have the capacity to handle new jobs and application changeovers effectively and efficiently is critical to your profitability.

What is included?

Creating new job applications

In any business, capacity and efficiency are critical. With job application management, our specialist works with you to:

- Create modes for new applications and make mode and model modifications within the Direct Connect software.
- Modify software configuration files such as FBD files, user database files and others.
- Help improve work cell efficiency.
- Enable you to increase your business through new and existing clients without being concerned about the complexity of setting up new applications.

You can also share this process with prospective clients to demonstrate your commitment to testing, reliability and performance on your production floor.

A service manager will schedule routine meetings to discuss future new job application needs and schedule a Pitney Bowes specialist for any required design work.

Managing existing job applications

A clean, well organized job structure is critical in a well-run shop, ensuring maximum up-time and efficient operator performance.

For existing jobs, our specialist:

- Enables you to leverage a job application across multiple machines, maximizing machine utilization.
- Guides your production managers through the proper methodology around managing all job applications within your environment.
- Suggests the best strategies and day to day practices for keeping job applications well organized, such having consistent naming conventions.
- Discusses the best ways to keep job applications updated consistently in your environment.

Our specialist will work with you on your plans and needs around job application management and best practices. Items not included with this service:

- Hardware related scope changes to accommodate any application management requests.
- Any new scoped direct connect software modules/keys not currently purchased.
- Non-service related labor not included.

How do you benefit?

At Pitney Bowes, we focus on our client's outcomes. That means we believe our services should make a difference in how your business functions by:

- Increasing workflow and capacity by better managing the production environment.
- Helping your production managers understand and apply best practices for machine set up and application runs.
- Helping you meet your client SLAs by maximizing your operators' productivity and efficiency.
- Sharing best practices in job application management that can increase your machine utilization and operator performance.

