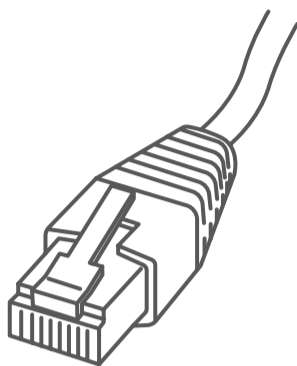


# SendPro® Network SendKit

MAC Installation Instruction

Network Printer Connection



Read Now BEFORE you unpack your equipment

**Continue reading below**



## Right, let's get your SendKit up and running quickly...

Let's first get together the things you will need:

- The box containing your SendPro® Network SendKit.
- A Welcome Email from Pitney Bowes containing your SendPro® Login details.
- A Mac on which you have full admin rights to allow downloading and installing software.
- 1 available USB ports on your Mac.

If you have not received the email from Pitney Bowes, do not go any further with this installation. Please visit [pitneybowes.com](http://pitneybowes.com) for contact details for your market.

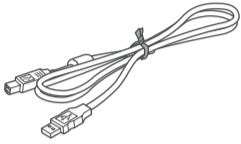
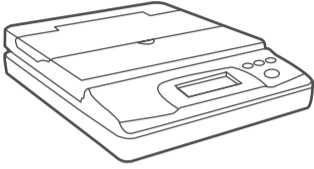
---

# 1. Opening the box and unpacking.

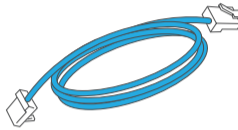
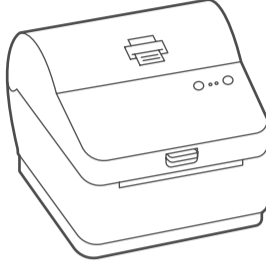
Here's a diagram and explanation of the items you should find in your box.

If you have any problems during this installation, refer to 'Troubleshooting'.

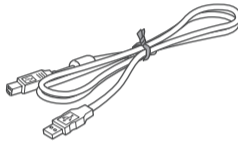
Scale



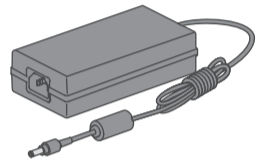
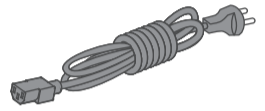
Printer



Network Cable



USB  
(not used  
for network  
installation)



Power Cord

---

# 2. Signing into SendPro®.

Sign into SendPro® using the link in the welcome email.

[sending.ca.pitneybowes.com](https://sending.ca.pitneybowes.com)



---

# 3. Downloading the scale utility.

Now you are signed into SendPro® Click on the Help icon. 

Select **Download SendPro® Scale Utility for macOS**. This can also be downloaded from the App store by searching for SendPro.

Follow the prompts on screen to install.

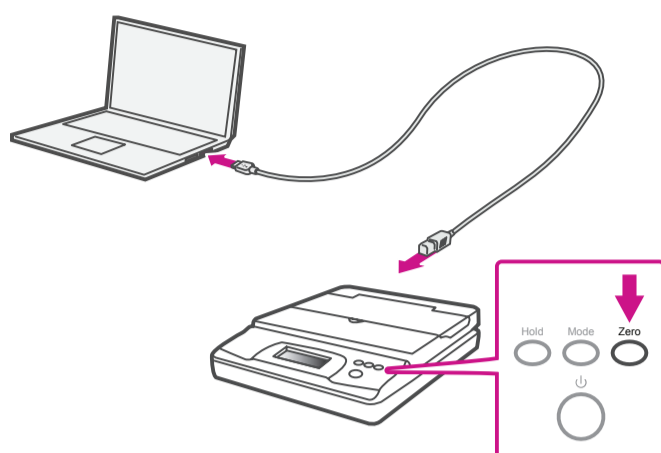


---

## 4. Connecting your scale.

Place your scale on a firm and flat surface near to your computer.

Connect your scale to your computer using the USB cable supplied. Then press the **Zero** button.



Note: If you do not wish to use a USB to connect your scale refer to the online help for information on battery installation.

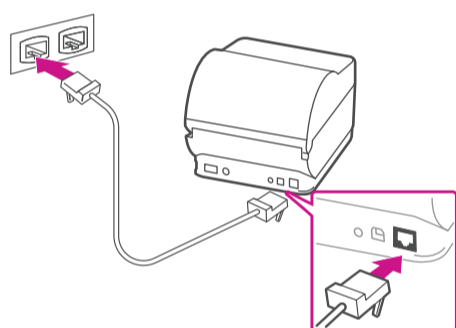
---

## 5. Connecting the printer.

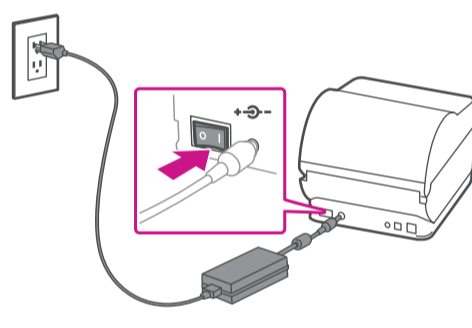
Connect your Network cable to your printer and Network socket.

Connect the power cord and adapter to your printer (as shown) and switch on.

Network Cable



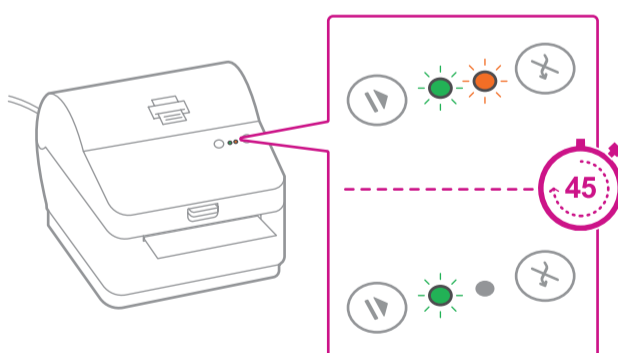
Power Cable



---

## 6. Printer ready.

Wait for approximately 45 seconds until the green light remains constant and the printer is ready.



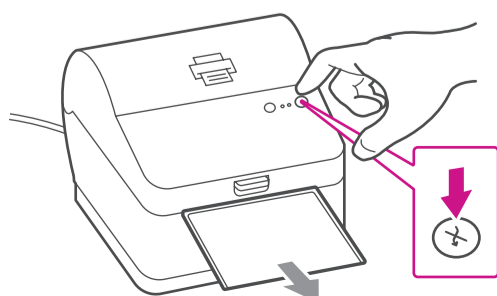
---

## 7. Aligning the label roll.

**Press** the (X) button and check that the label feeds out correctly.

Note: If the label does not feed correctly please refer to label alignment instructions inside the printer top cover.


Tear off the correctly dispensed label.

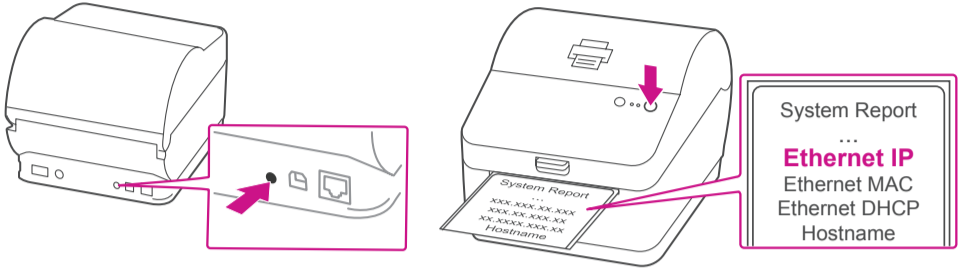


---

## 8. Printing a system report.


Print the System Report to obtain the IP address assigned to the label printer.

1. To print the system report simultaneously press the  button on the front of the label printer and the recessed button on the back of the printer with a suitable object such as a pencil or similar.
2. Keep the printed report that will be needed later in the installation process.



---

## 9. Downloading the printer driver.

1. Ensure you are signed into SendPro® and click on the Help icon. 
2. Select the **Datamax Printer Driver**.
3. Select to download the correct printer driver for your operating system.
4. Double click on the **Gutenprint 5.2.12-pre4.dmg** file.
5. Open gutenprint-5.2.12.pkg.
6. Select **Continue**.
7. Select **Install**.
8. The installer will prompt you for your Mac administrative login. Enter your administrator username and password and select **Install Software**.
9. When complete, it will say **The installation was successful**. Select **Close**.
10. Select **System Preferences** from the **Apple** menu.
11. Open **Printers & Scanners**.
12. Select the plus sign + to add a printer.
13. At the top of the window, select **IP**.
14. In the **Address** field, enter the IP address of the w1110 printer you identified earlier.
15. From the **Protocol** menu, select **HP Jetdirect – Socket**.
16. Leave the **Queue** field blank.
17. (Optional) To rename the printer, enter the desired name in the **Name** field.
18. From the **Use** menu, choose **Select Software**.
19. In the search field, enter **w1110**.
20. Select **Datamax-ONEIL w1110 - CUPS+Gutenprint v5.2.12** and select **OK**.
21. Select **Add**.

**When printing shipping labels on the w1110 printer:**

- In the Safari printer dialog box, you must select the Chose paper source by PDF page size box before printing.
- In the Adobe PDF printer dialog box, you must select 4x6 in label from the Paper Size menu.



# Now let's get shipping!

You can access in-depth Online Help that covers all operator and feature aspects of your SendPro® software and SendKit in detail. To access this information, press the Help (?) icon from your App. and select **See More Help Topics**. But for your convenience, we've included links to most commonly needed support to get you started.

## Creating a label

[Click Here](#)

## How to print a shipping label in SendPro

[Click Here](#)

## Managing Sendpro users

[Click Here](#)

## How to view your history in SendPro

[Click Here](#)

## Carrier Services and Packaging

For information about size and weight restrictions, visit the carrier's website:

[Canada Post](#)

[UPS](#)

[FedEx](#)

Note: Available carriers dependent on Sendpro subscription.

## How to change your username, password, and account name for SendPro

[Click Here](#)

If you're still having trouble, then visit  
[www.pitneybowes.com](http://www.pitneybowes.com)  
and select Support.



\* A W 3 2 6 8 9 R E V A \*

AW32689 Rev. A 04/18  
©2018 Pitney Bowes Inc.  
All Rights Reserved

pitney bowes 

5500 Explorer Drive  
Mississauga, ON L4W 5C7  
[www.pitneybowes.com](http://www.pitneybowes.com)