



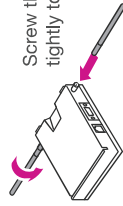
## Connectivity Device SendPro Install Instructions

The Connectivity Device SendPro enables you to add funds, perform automatic updates, and receive alerts using a cellular 4G network.

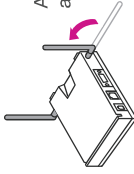
### What's in the Box



### 1. Assemble the antennas to the Connectivity Device.



Screw the antennas tightly to the device.



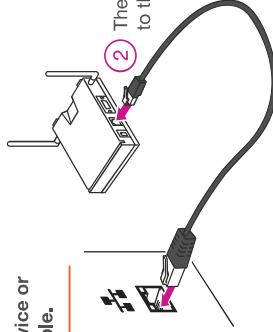
Adjust the angle of the antennas appropriately.

### 2. Plug the Ethernet cable.



**Be sure to power up the sending device or computer before connecting the cable.**

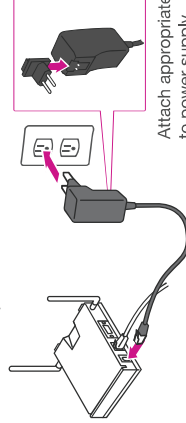
- 1 Plug the Ethernet cable to the (RJ12) port at the back of your sending device or computer. (Your sending device would be either SendPro C or SendPro P)



- 2 Then plug the other end to the connectivity device.

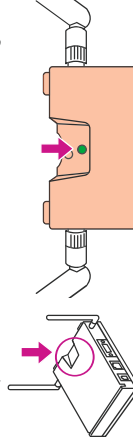
### 3. Power up the Connectivity Device and check power indicator.

Plug the power adapter to the RJ12 port on the connectivity device and into a power outlet.



Attach appropriate adapter to power supply.

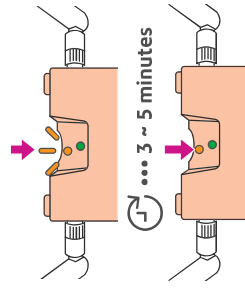
Once power is on, the first LED will turn solid green.



If the LED is not lighting up, Call the Pitney Bowes Support phone number located at the end of instructions.

### 4. Check connection indicator.

The second LED will flash orange, if it has not flashed. Call the support phone number at the end of instructions.

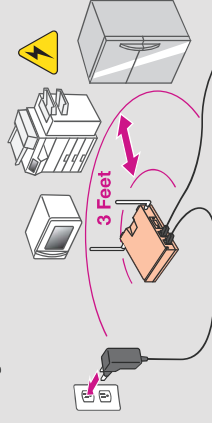


In about 3 ~ 5 minutes it should turn to solid orange, if it has not happened, try the following procedure A or B.

Once it turns to solid orange, signifying that the connection is live, move to step 5.

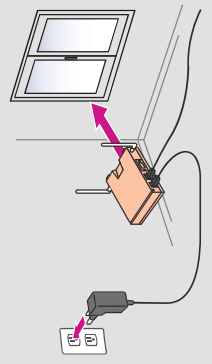
#### Procedure A

Move the device at least 3 feet away from any electric appliances that could be causing interference. You might relocate your sending device together or use the longer Ethernet cable if available.



#### Procedure B

Move the device closer to a window or outside wall. You might relocate your sending device together or use the longer Ethernet cable if available.



Plug in the power adapter then check the orange LED color. If it turns to only solid orange, move to step 5.

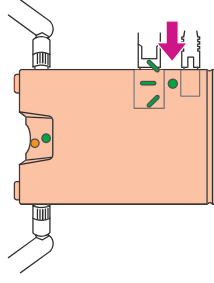


If the orange LED is still not turning to solid orange.

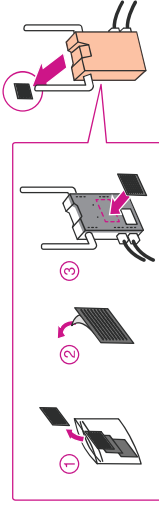
Call the Pitney Bowes Support phone number located at the end of instructions.

### 5. Check for flashing green LED.

You will see a flashing green LED light between the Ethernet cable port and the RJ12 port. Your sending device is ready for you to use.



Using the Velcro strips provided, secure the device as needed. Make sure to apply a velcro strip in the middle of the back of the device. Ensure not cover any labels.



Pitney Bowes Support  1-855-393-8871

pitneybowes  © 2020 Pitney Bowes Inc. All rights reserved.