

Installing Updates

SendSuite Live™

White Paper

Patch releases are periodically made available in order to introduce fixes and amended SendSuite Live features. These updates are published on www.pbsendsuitelive.com in the Release Notes section. We also recommend that you review any *Possible Breaking Changes*.

Updates should only be applied:

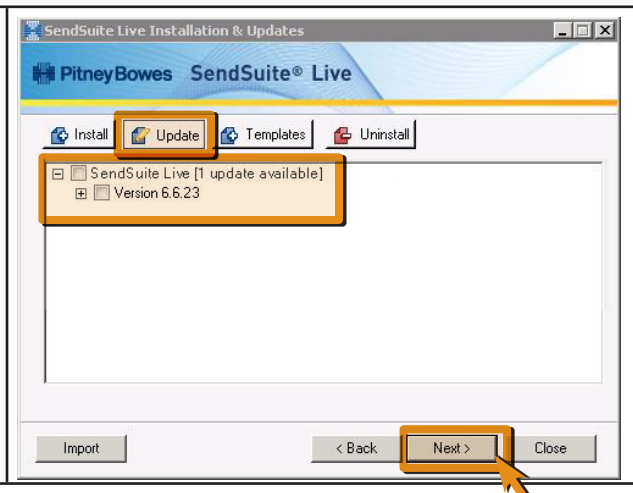
- When the system is being installed for the first time.
- When the system is live and the installation engineer is in consultation with the customer. It is recommended that new updates are tested in a test environment mode in this instance.

To view available updates and patches, click **Updates** on the main welcome page.

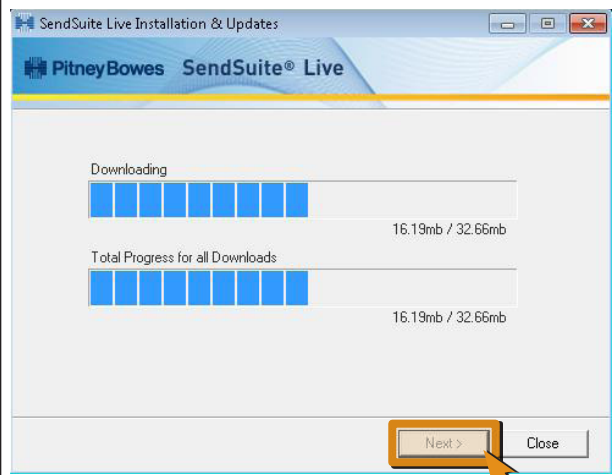
NOTE: Patches are cumulative. If you install patch 6.6.23, you must first install all patches up to and including patch 6.6.22. If you select a patch, all the previous patches will also be selected.

To Download and Install Available Updates

1. Double-click the **SendSuite Live Installation & Updates** utility on your desktop.
2. Click **Manage** and click **Update**. The updates that are available for the components installed on the machine are listed.
3. Expand the list of fixes and features and select the patches you want to install. Each patch details the fixes and features that it will add to the component. (To select all patches for a component, click the component header.)
4. Click **Next** to start the download.



5. After the download is complete, click **Next**.



6. Click **Next** to start the Installation.
7. After the installation is complete, click **Finish**.

