



Shipping & Mailing

## SendSuite® Live

# Release Notes for v6.17

SendSuite® Live Version 6.17 includes the following enhancements:

### **Support for Key Exchange/Forms Authentication Mixed Mode**

Added the ability to use mixed mode authentication when a site is set to use KeyExchange. This allows users not under the key exchange provider data feed to gain access to the system.

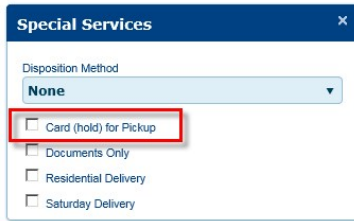
The URI used to access the system requires a new query string parameter “MixMode=true”, which should be added to the URI as shown below:

<http://sisu/SendSuite%20Live/login.aspx?ReturnUrl=%2fsendsuite+live%2fprojects%2flogin.aspx&MixedMode=true>

### **Support for Hold at Location (Card for Pickup) Special Service for Canada Post**

“Card (Hold) for Pickup” has been included in the special service options for Canada Post. This option allows for printing “Card for Pickup” on the label to inform that the shipment is held at location and ready for pickup.

This option is now available in the Special Service selection for both Generation 1 and Generation 2 project templates.



### **Added Time in Transit for UPS API**

Time in Transit has been added for UPS API Ground services. The user will be able to see the Commitment Level information in Rate Request. Time in Transit is integrated in Rate Request, there is no need to map it to a project.

Note: Time in Transit is not supported for Express services, although UPS API provides commitment level information in Client Rate Response.

### **Support for Canada Post Return Services**

Return functionality has been added for Canada Post Carrier. The user will now be able to print a return label for the associated shipment.

Returns are only supported for the following domestic services:

- Canada Post Priority Courier
- Canada Post Xpresspost
- Canada Post Expedited Parcel
- Canada Post Regular Parcel
- Canada Post Delivered Tonight

Additionally, a relationship between outbound and return shipment has been added, which affects voiding function. Voiding the outbound shipment will now automatically void the return one as well.

### **Added Ability to Sign Http Redirects SAML Assertions**

The option of signing SAML HttpRedirects has been added as a new setting (Sign HttpRedirects) in Server Configuration Utility.

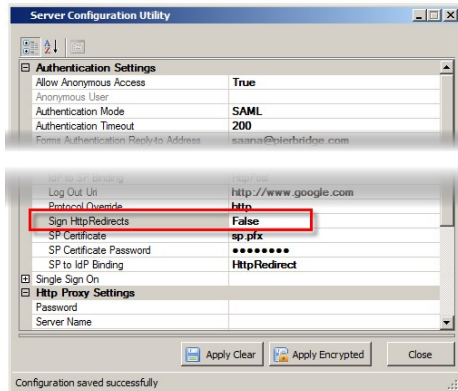
If this option is set to "True", all requests sent to the SAML Identity Provider will be signed using the Service Providers certificate. If set to "False", no signature will be added to SAML HttpRedirects.

---

## Note:

Some browsers have a limit on the size of a query which may be exceeded by signed SAML HttpRedirects (e.g. IE7 has a limit of 2083 characters for query strings, which will be exceeded by a signed SAML HttpRedirect)

---



## Batch Meter Mode Project Setting

Added rating ability when processing shipments in batch mode. The product will now prompt an error message "Please rate before using batch mode", if no rating has been done. Upon rating the shipment, the Postage amount on the meter will now be set automatically without the need to manually enter the numbers.

Also refer to [Project Template Changes](#).

## Improvements to Weight Rounding

Weights submitted to carriers when rating/shipping will only be rounded in the following cases:

### IOP (USPS):

First Class Package service: weights above 13 oz but less than 14 will be rounded up to 14oz. Weights above 14 will be rounded down.

Other IOP Services: minor weight rounded up to next whole oz.

### FedEx Server:

Rounding will function as required by carrier: to two decimal places.

Additionally, the following changes have been applied to the database:

The Packages table in the database has been accommodated with a new column: Submitted Weight (that sent to the carrier). The Weight Exact column now stores data entered by the scale

or user without any rounding applied.

Any Billable/Rated Weights returned (If supported by a carrier) are stored in the Charges table.

Also refer to the [Possible Breaking Changes](#) section.

### **Support for SAML 2.0/Forms Authentication Mixed Mode**

Added the ability to use mixed mode authentication when a site is set to use SAML. This allows engineers to enter the customer's Shipment Server Configuration, Project Administration and Project Login screens, when the authentication forms is set to SAML.

The URI used to access the system requires a new query string parameter “?MixMode=true”, which should be added to the URI as shown below:

```
http://localhost/SendSuite%20Live/login.aspx?ReturnUrl=%2fsendsuite+live%2fprojects%2flogin.aspx
&?MixedMode=true
```

## **Support Items**

This section includes items that have been raised via Support and escalated to Development for resolution within this release.

### **Updated Test Server Endpoints for Endicia**

Updated the test server endpoints used by the USPS Postage (Endicia) carrier. This reflects recent changes made to the Endicia testing environment.

No impact on customers who obtained credentials through the standard Endicia signup process, including those who ship in a test environment.

If customers have only ever used their credentials in a test environment, they should use their live credentials with Shipment Server configured to run in Test Mode; this will ensure they are not charged for any postage transactions.

### **Fixed Issue with Setting Insurance Type in Generation 1 Desktop Project**

Extended the Parcel Item Line Entry control to allow setting of Insurance Type in ship and rate requests. This addresses an issue in the Desktop 1.12 project where processing insured shipments (using the Print at my Desktop option) would fail because no insurance type was specified. Note that Insurance Type will default to “1”; you can edit the InsuranceType property on the control to change this.

### **Fixed Issue with Processing Returns using FedEx Ground and Home Delivery**

FedEx Server, configured to work with FSMS, can now process returns billed to a third party using the following services:

FedEx Ground

FedEx Ground Home Delivery (note the sender's address must be flagged as Residential)

The “Residential” element has been added to the Pierbridge Return Request schema. You can map this element to a control on a Project Template in Composer.

#### **Fixed Issue with Extract File Download Server Task**

The “Extract File Download” server task now searches for all possible IMpb data formats. Also, the task now continues to process an extract file after failing to find a package.

#### **Fixed Issue with List Contact Count Not Updating in Generation 2 Address Book**

The following issues have been successfully addressed:

Contact count now updates correctly when a contact is deleted from a bulklist.

Non-admin users are not able to remove from or add to global/departmental/location lists.

CSV import of contacts now allows amended contact details to be imported (userID, addressBookTypeID and customer Ref must be the same as original contact), and this will update the details of the existing contact, rather than creating a new contact.

The exact same contact details are now impossible to be repeatedly added to the same list.

#### **Extended Response Printing to all Output Types**

The ability to support more output types and formats has been added to the client printing utility for response printing. As such, any output can now be configured for response printing.

This will affect the SendSuite Live Printer Utility, which will now display an extended list of customizable outputs.

Also refer to the [Possible Breaking Changes](#) section.

#### **Added Documentation on Internet Explorer ActiveX settings**

The specific ActiveX settings required to load Composer in Internet Explorer have now been documented.

#### **Fixed Issue with XML Characters in Projects Configuration Screen**

A product limitation where the “<”, “>” or “&” characters were not handled correctly when saving settings in the Projects Configuration screen has been amended.

#### **Corrected Client Printer Popup in Chrome**

To comply with the recent Chrome changes, the client printing popup window behaviour has been amended. The user must now manually close the popup window after the document has printed.

This change only affects the Chrome browser, all other browsers will still automatically close the window after printing.

#### **Correction to Ensure Zero Dimension Scale Values are not Overwriting User Added Values**

When using the Parcel and Line Item Control with a scale that returned all dimensions set to zero, then these values would overwrite any customer entered values. After the update if all dimensions are zero then these will not overwrite any user entered values.

### **Eliminated Curacao Country Code (CW) from the Database**

The former Netherlands Antilles has been dismantled and has therefore been removed from the Address Codes table. The following constituents of the former Netherlands Antilles have previously been added to the Address Codes table:

- Bonaire, Sint Eustatius and Saba (BQ)
- St. Maarten (SX)
- Curacao (CW).

### **Upgraded OnTrac Tracking To Use V2 Based API**

The tracking transaction for OnTrac has been upgraded to use the carriers v2 API. The existing system is being phased out by the carrier, and will be discontinued on the 15th April 2015.

### **Removed Hardcoded Rules for UPS Consolidated Paperless Invoicing Setup**

Changes have been made to stop automatically setting paperless invoicing when used with UPS Consolidated. Previously the following scenarios would automatically set paperless invoicing:

- All WorldEase shipments
- Shipping with UPS Express NA1 service to an International European destination
- Shipping with UPS Express Plus service from outside the US or Puerto Rico.
- Shipping with either UPS Express or UPS Express Saver from outside the US or Puerto Rico.
- Shipping with UPS Expedited service from outside the US or Puerto Rico.

Following the application of the update the above rules are not automatically applied. Instead paperless invoicing can be by requested by setting the "CommercialInvoicePaperless" element to either "1" or "true" in the ship request. This change allows for greater control over when paperless is requested from the carrier.

Also refer to the [Possible Breaking Changes](#) section.

### **Resolved CloneOutput Stored Procedure Error When Adding Outputs To Profiles**

Resolved an issue whereby adding outputs via the profiles screen would cause a "there has been a problem communicating with the server" error to be displayed. In addition an error would be recorded indicating the CloneOutput stored procedure has failed. Both of these errors have now been corrected.

### **Fixed Issue with Voiding an Emailed Return Shipment**

An issue with voiding the returns, processed with FedEx Web Services using emailed return label service, has been resolved. Emailed returns are now stored in the shipments table as Return Type 3, whilst, as previously, standard returns, tag returns and no returns are recorded as Return Types 1,2 and 0, respectively.

Also refer to the [Possible Breaking Changes](#) section.

### **Fixed Issue with Ship Requisition Search not Responding To Keypress Event in Mailroom Template**

Resolved an issue with the "ship requisition number" search textbox not bringing up the Requisition lookup control when pressing enter on a first template load.

Also refer to the [Project Template Changes](#) section.

Corrected an Issue with Released Carrier Currencies Table Missing an Entry

Added CAD as a supported currency for UPS Consolidated. An Index has been added to the Carrier Currencies table on the ID column.

#### **Fixed Issue with Producing USPS PS Form 3877 when in Retail/Meter Mode**

The ability has now been added to select the 'USPS PS Form 3877 Metered' as an output from Shipment Server Configuration. This document has been added for customers who have configured ConnectShip for Retail/Meter mode, and by selecting this output the product will request 'TANDATA\_USPS\_MMS.FORM3877\_METERED' from the Connect Ship server after the End of Day close-out.

#### **Fixed Issue with Changing the Pass Phrase in Test Mode**

The Test URI has been modified to be also used for Pass Phrase change requests to Endicia, which previously was only dealt by the Live URI. Additionally, the following duplicate logs have been removed from diagnostics:

Change Pass Phrase

Buy Credit

Account Status

#### **Package Level ContentDescription Allowed to be Printed on Labels for ConnectShip**

Previously, when shipping with ConnectShip, the application would pass either the ShipmentDescription element or the Contents/Description elements to be printed at the bottom of each shipping label.

The additional ability has now been added to allow the use of a package level description. As such, the following rules now apply for all ConnectShip labels:

If a value is present in the ShipmentDescription element, it is printed on all labels.

If a value is present in the ContentDescription element (at package level), it is printed on each package label.

In all other cases, each of the Contents/Content/Description elements is used.

#### **Fixed Issue with Rating for OnTrac**

Corrected rating with OnTrac using ZIP+4 formatted postal code.

#### **Fixed Issue with Concurrency for Custom Label Generator**

When reading labels from a custom label generator a "Value does not fall within the expected range." error might be seen. This would occur only if multiple users requested the label simultaneously, and was therefore intermittent, however, it would result in a custom label not being printed or stored.

#### **Fixed Issue with Sameday End of Day Manifest Totals**

The grand totals shown at the bottom of the Sameday manifest have been corrected to properly calculate the values.

Also refer to the [Possible Breaking Changes](#) section.

### **Enhancement to Ensure Generation 1 Templates can be Used with Internet Explorer 8-11**

Changes have been made to allow the use of Generation 1 project templates through Internet Explorer 10 and 11.

Please ensure that the Windows updates for .NET 4 have been applied for the server/workstation.

In case of logging issues, it is recommended to run the browser in compatibility mode.

### **Resolved Performance Issues with Stored Procedure GetShipmentsToManifest**

Resolved performance issue when processing the End of Day task with an ERR account, which previously could time out or fail to run.

In addition, the Detail Two (D2) row submitted to the Postal Service as part of the IMpb upload file has been corrected, so it is now the correct length.

Also refer to the [Possible Breaking Changes](#) section.

### **Amended DHL International API to Return DeliveryTime**

The DHL International API has been extended so that the CommitmentLevel and DeliveryTime elements in the response are correctly populated with the values returned by the carrier. This change means that this information will now be available within the rating controls inside the templates, e.g. RateShop controls, etc.

### **Corrected AvailableInterfaces Design Time Property In Postage Meter JOC**

The AvailableInterfaces design time property on the Postal Meter JOC has been corrected, so that the setting is applied correctly.

### **Corrected Scripting Event in Carrier and Special Service Selection JOC**

The CarrierServicePackageChanged event is now raised when the default service and package type are selected for a newly selected carrier. As such, templates which rely on this event to perform rating, would not perform a re-rate using the newly selected values, e.g. Generation 2 Mailroom project templates.

Also refer to the [Possible Breaking Changes](#) and [Project Template Changes](#) section.

### **Extended Carrier Onboarding Controllers in Onboarding API**

The diagnostic logging has been corrected for the carrier Onboarding (FedEx Web Services and UPS API) method calls when called via the Onboarding API. The content of these calls will now be recorded for the Onboarding API as well.

### **Fixed Issue with UPS API Rate Shop Selection**

Resolved an issue with a Desktop project template passing cost center code as a package reference, if no package reference was set in the Shipper Reference field.

Also refer to the [Project Template Changes](#) section.

### **Fixed Issue with Missing Batch Meter Mode Project Setting**

The “Batch Meter Automatic Postage” project setting has been added to the product. If set to “True”, it prompts the user to rate before using the batch mode, which in turn sets the postage on the meter



according to the rate amount. Otherwise (if set to “False”), the batch mode retains its previous functionality.

Also refer to the [Project Template Changes](#) section.

### **Corrected IOP StealthEndicia Flag for International Shipments**

The ShowPostageOnLabel element in the PierbridgeShip request is now correctly used with the IOP carrier and International shipments, whereas Previously, this flag was operating for Domestic shipments only.

### **Resolved Timeout Loading BPOD Documents Viewer Containing Large Number of Shipments**

A performance issue has been corrected when loading the "Bulk Proof of Delivery Document Viewer" screen and processing PDF's that contain a large number of pages.

To resolve the issue with calculating the number of pages in each PDF file, the information stored in the database has been changed so that the extracted pages (which are stored in the [Output Item] rows table) are now associated with each PDF file. This allows the counting of pages to be calculated within the database, thus avoiding the need for the application to process large PDF files.

Large BPOD files (1000 shipments per file) that have already been loaded prior to installing this patch might still show incorrect page count for some PDF's.

### **Fixed Issue with Urban Express Tracking**

An issue has been corrected whereby tracking via either the View template or the Batch tracking system was not working for Urban Express.

## **Other Changes**

### **Added Paginate Option to Labels and Documents Screens**

A new “Paginate” option on both the Labels and Documents screens in Shipment Server Configuration provides an ability to apply page breaks to outputs spanning multiple pages. This gives more control over where images are positioned on new pages. Pagination can be applied when setting up labels or documents for client printing only.

There are [Possible Breaking Changes](#) associated with this item. Please also refer to the [XML Schema Changes](#) and [Project Template Changes](#) section.

### **Fixed Issue with Searching on Search Fields Linked to Multiple DataViews in Composer**

If a Search field is linked to more than one DataView, template users no longer get an error message if they perform a search using the control. Newly created Search fields are still added to the default Search Page DataView; however, results from searches performed across multiple DataViews are not combined into one. When a search field is populated with data, search fields on all other DataViews are now disabled.

### **Restored Send Message Utility**

This release restores the Send Message Utility to the Base Shipping Product. With this utility you can resend MSMQ messages which a customer's system might have missed. To use the utility:

Launch it from C:\Program Files\SendSuite Live\Shipment Server\Tools

Enter the URI of Shipment Server's XML processor and, optionally, credentials required to access the endpoint.

Enter one or more Shipment IDs, and then click Send.

A number of PierbridgeMessage requests are sent to the XML processor. The utility will then send any messages that are available for the shipments you entered.

### **Fixed Issue with Setting Delivery Confirmation for Group Shipping**

The DeliveryConfirmation element is now set consistently by the Carrier and Service Selection control. This addresses an issue with integrating group shipping functionality into a limited number of project templates.

### **Fixed Issue with Voiding Transactions with OnTrac**

An issue where voiding transactions for OnTrac caused a 404 error message to be displayed has been resolved.

### **Use Output Type Rule Indicator now Supports more Output Types**

Extended the UseOutputTypeRule element to support all International Documents and LTL Documents, including Custom Documents of these types. This means you can produce a Bill of Lading for non-LTL carriers, or a Custom International Document for a domestic shipment, by setting the element to zero.

### **Added Index to End Of Day Table**

A new index IX\_End Of Day\_DateClosed has been added to the End Of Day table. This improves the performance of End Of Day processing for a specific date range and is used automatically by SQL Server.

There are [Possible Breaking Changes](#) associated with this item.

### **Increased Maximum Character Length of Line Item Descriptions**

Line item descriptions can now contain more than 100 characters. The length of the Description column, in the Content Codes table, has been increased from 100 to 300 characters. If this table contains a large amount of data, the upgrade will take longer than usual to complete.

### **Fixed Issue with US-Origin International Returns for UPS Consolidated**

UPS Consolidated now supports UPS Returns Services for international shipments that originate in the US.

### **Fixed Issue with Standalone Documents not Displaying in Documents Viewer**

If set up Standalone Documents 4–10 now display on the Documents Viewer tab in the Shipping Administration application.

### **Fixed Scripting Issue with Field Names that Start with a Number**

In Composer, scripts no longer fail if they reference field names starting with a number.

### **Fixed Issue with Caching Results of Pierbridge Order Get**

The results of any Pierbridge Order Get Requests are no longer cached for 20 minutes (if caching is enabled). This means that deleting an order and then adding it again using different details no longer causes the deleted order to be returned from the cache.

### **Improvements to Diagnostic Information when Requesting Credentials**

The Diagnostics page now provides logs for the requests below. This restores the previous behavior.

Requesting Security Credentials for FedEx Web Services (including SmartPost Web Services)

Requesting Security Credentials for UPS API

Requesting Shipping Keys for FedEx Web Services (including SmartPost Web Services)

These logs are displayed if the Log Level setting, in the Configuration Settings dialog box on the Server Options page, is set to at least "Info".

### **Fixed Issue with Maximum Values in Routing Conditions**

The Maximum Number of Pieces, Weight, and Value defined in a routing condition are now included when the associated routing rule is applied to a Pierbridge Route Request. For example, if a Pierbridge Route Request contains a Weight value of 150 lb, and the routing condition defines a maximum weight of 150 lb, the routing condition will now match correctly and the associated rule will be applied.

### **Added Configurable ATS Consolidation**

A change has been made to the ATS carrier behaviour. It is now possible to enable/disable consolidation shipments within Shipment Server in a carrier record.

### **Fixed Issue with Voiding FSMS International Multiple Package Shipment**

An issue with the product not properly recording voiding FedEx Server International Package has been resolved. The product will now display the whole shipment as voided upon voiding an individual package, as FedEx Server automatically voids the entire shipment. Domestic shipments are unaffected by this change.

### **Discontinued Rounding Content Item Unit Values**

Rounding values to two decimal places in the Content-level "value" field located in the "Packages" section has been removed to allow content items to be submitted to more than two decimal places.

### **Fixed Issue with the Next Button in the Add Carrier Utility**

An issue with the "Next" button not being enabled correctly when a user had valid settings selected in the Add Carrier Utility wizard-type screen has been resolved.

### **Corrected RateType Handling for Packages in Response for FedEx Web Services**

The number of <Package> nodes have been corrected for FedEx Web Services in Rate, Ship and Return transactions. Previously two <Package> nodes were being returned for a single package shipment. In addition, the package level <Rates> elements was missing the list rate (type 2). Both of these issues have now been corrected.

### **Extended ConnectShip Billing Terms To Allow Free Domicile**

The billing term passed to all ConnectShip carriers have been extended to allow SHIPPER to be passed when using Third Party Billing for duty/taxes and for the shipment when terms of sale is set to FCA. Previously in this scenario the application would pass DDU as the billing term to Connectship.

### **Added Missing Fields on FedEx ETD Commercial Invoice**

The Importer of Record address details and reference numbers are now submitted to FedEx during each ship request. This change means that these details will now appear on FedEx produced documentation such as the ETD Commercial Invoice etc. These fields are only submitted if the Importer of Record contains a value for City, Region and Postal Code. The reference number (IRS/EIN) displayed on the report has the following rules:

1. If an Importer of Record entry has a value in the ImporterOfRecordTaxID field, then this value is submitted.
2. If an Importer of Record has a value in the IdentificationNumber field, then this value is submitted.
3. Otherwise no reference value is submitted.

### **Added Support for COD Currency Type To Pierbridge Pending Request**

Support has been added to the Pending (batch) request which now allows the currency type to be specified for COD shipments.

Also refer to the [XML Schema Changes](#) section.

### **Fix Issue with RateTypeID not Being Set when Using Alternate Rating Custom Engine for CTSI Carrier**

Resolved an issue with the shipment of small parcel quotations obtained through the custom rate engine with CTSI resulting in total, accessorial and other related costs not being stored in the database (Shipments table).

### **Added Support for Returns in the Billing Options Component**

The Billing Options control (HTC) has been extended such that it will support the PierbridgeReturn transaction.

### **Fixed Issue with Xsys Package Events Firing Twice**

Resolved issue with FedEx Server international shipments with Electronic Trade Documents option enabled, where some shipments were causing xsys output logs to record an additional package.

### **Corrected TNT Labels and Documents Request**

TNT Express Label, Routing Label and Consignment Note request to ConnectShip have been corrected; accordingly, these will now be properly generated and displayed in the Shipment Viewer.

### **Corrected Base RateType Dropdown List Selections On Carrier Rates Administration Screen**

The options shown in the "Base Rate Type" dropdown have been corrected for all carriers. Previously, these were incomplete in some cases, and would only show the carrier default rate, even though a list rate might be available for a carrier, e.g. FedEx Web Services.

### **Resolved Timeout Loading Diagnostics Screen with a Large Number of Logs**

The issue with diagnostics screen timing out on loading if a large number of logs were stored in the database has now been resolved.

### **Resolved Overlapped I/O Error when Releasing Network Share Credentials in FedEx Server Connector**

When the application was releasing resources used after fetching FedEx Server labels the following error might be seen if two users attempted to release the share at the same time:

Overlapped I/O operation is in progress

This error would not affect label operation but would be recorded in the server event logs and has now been resolved.

### **Corrected Country Aliases Editing**

The Country Aliases editing screen within Shipment Server Administration has been corrected, and now displays the editable list of county mappings.

### **Corrected CTSI Charges not Getting Saved in the Database**

An issue has been resolved whereby setting custom UpdateRates and DisplayRates and shipping using freight-based carriers the charges were not being recorded within the database.

In addition, the logging around charge calculation has been changed to assist future fault finding around this issue. The "Charges Event" has now been replaced with a "Charges Request", which shows the inbound XML and the "Charges Response" containing the same log entry that previously recorded under the "Charges Event".

### **Corrected UPS Consolidated Trade Direct Rating**

An issue where rating a UPS Consolidated shipment would not pass consolidation information to the carrier has been resolved.

### **Corrected Administrators Toolbar Script when Running on a Drive Different to the System Drive**

The Administrators Toolbar repair script has been corrected so that it will function when run from a drive different to the system drive (c:\), e.g. d: drive.

### **Corrected Invoice Carrier Service Selection In Carrier Services Screen**

Resolved an issue which prevented the selection of the Invoice carrier service from within the carrier services selection screen.

### **Fixed Issue with Consolidated Trailer Administration HTC not Allowing PARS Entry for UPS Consolidated**

Corrected an issue with the Consolidated Trailer Administration HTC control containing the PARS entry field which was not available for use with the UPS Consolidated carrier.

### **InBound Request Host Only Preserved if Using SSL**

The inbound shipment server request details (IP or machine name) are now only preserved if SSL (Secure Socket Layer) is enabled. This addresses the issue which occurred if the IP address was a

Network Address Translation (NAT), in which case it was not being recognised by Shipment Server.

### **Added Paperless Commercial Invoice Support for UPS Server**

Added support for the legacy UPS Server carrier to request paperless invoicing when performing a shipment, which previously was only supported for the newer UPS Consolidated module.

### **Fixed Issue with Remote Printing**

The remote printing service has been corrected, and will now correctly handle printing labels and documents. A new Client Printing component containing the updated service is now available.

### **Fixed Issue with Schedule B Code Submitted from the Parcel and Line Item JOC**

The Parcel and Line Item control has been changed such that the "schedule B#" value entered into the line item portion of the control is now submitted in the "International/Contents/Content/Code" field. This change means that this value is now printed on documents, e.g. associated International Documentation such as the Commercial Invoice.

### **Fixed Issue with Requests to Custom Rate Engine**

Resolved an issue with incorrectly encoded requests sent to a custom rate engine.

### **Corrected Consolidated Open Response Handling In FedEx Connector**

Corrected an issue that prevented the opening of a consolidated shipment when used with FedEx Server carrier.

### **Changed Validation Billing Rules for all Custom Carriers**

The shipment server contains a number of validation rules that currently apply for a number of carriers, one of them being the following:

When billing receiver all ConnectShip carriers require an account number

When billing 3rd Party all carriers require either an account number or a 3rd party address (Address1, City, Region and Postal Code)

The above rules are now not enforced for any custom carriers which have been added by the Add Carrier Utility (carriers ID >= 1000). This change means that the compliance logic, if appropriate, should be handled by the custom carrier directly rather than the shipment server enforcing rules for carriers it does not have direct support for.

### **Fixed Issue with UPS Consolidated Ground Freight Pricing Service**

UPS Consolidated Ground Freight Pricing service has been corrected, such that the request submitted to the carrier now contains all mandatory elements the carrier requires. The following Pierbridge Ship elements are needed for this service:

Packages/Package/FreightClass

Packages/Package/NMFC

---

## Note:

At this time the application does not support the NMFC sub-category element, which can be optionally used with this service, for which ConnectShip must be loaded with special rate information.

---

## Project Template Changes

The following templates have been updated and can be used with this release.

Template	Version	Comments
SendSuite Live Desktop	Generation 2 – 2.10	The scripting function has been modified to cater for the URL location changes for Client Printing (see <a href="#">D-01851</a> )
SendSuite Live Mailroom	Generation 2 – 2.10	
SendSuite Live Mailroom	Generation 2 – 2.10	Fixed issue with requisition number search textbox.
SendSuite Live Mailroom	Generation 1 – 1.17	Added rating ability when processing shipments in batch mode
SendSuite Live Mailroom	Generation 2 – 2.11	
The following issue have been addressed in this template:		
SendSuite Live Mailroom	Generation 2 – 2.11	Corrected Scripting Event in Carrier and Special Service Selection JOC.  Added project setting which when set to “True” changes the batch mode behaviour to rate before using the batch mode.
SendSuite Live Desktop	Generation 2 – 2.10	Fixed Issue with UPS API DE Rate Shop Selection.
SendSuite Live Mailroom	Generation 1 – 1.17	Synchronization template.

## Possible Breaking Changes

This section lists all changes that have the potential to break legacy functionality. Please review the contents of this section before updating any project to understand the changes that are being made and any actions that you need to take prior to applying the patches.

### What the patch changes

### What you need to do

---

D-02142 Added Index to End Of Day Table	Review all user-added indexes before upgrading and remove any that have the same name as the new index. Check that no duplicate indexes already exist on the DateClosed field in the End Of Day table.
---	--

---

D-02175 Extended Response Printing to all Output Types

After the upgrade has been performed, it is necessary to change the printer for Labels in Printer Configuration Utility (“Documents & Labels” button) to be set up as Thermal Printer, if image label printing is required.

Customers using the current response printing module should be aware of the change in behaviour:

Under the new module all images will now be by default sent to the Laser Printer, whereas previously image labels would be sent to the Thermal Printer.

---

D-01851 Added Paginate Option to Labels and Documents Screens

If you integrate with the application through the Blackbox API, ensure you use the new location of the URL element.

The “URL”, “Width”, and “Height” elements used in Client Printing have been moved inside a new container element and a repeating element block as shown:

```
<Pages>
  <Page>
    <URL>
    <Width>
    <Height>
```

This is to allow page breaks to be correctly processed by the client printing modules.

---



As the location of the URL for Client Printing has been moved, the existing templates will have to be amended, if a customer uses the Automation Toolbar functionality.

The following function:

```
function responseHasNoClientDocuments(xmlResponse)
{
    return ((xmlResponse.selectNodes("*/Packages/Package/Labels/Output[Uri]
").length == 0) && (xmlResponse.selectNodes("*/Documents/Output[Uri]
").length == 0));
}
```

should be replaced with the scripting function below:

```
function responseHasNoClientDocuments(xmlResponse)
{
    if (xmlResponse.selectNodes("*/Packages/Package/Labels/Output[Uri]
").length != 0)
    {
        return false;
    }

    if (xmlResponse.selectNodes("*/Documents/Output[Uri]").length == 0)
    {
        return false;
    }

    if (xmlResponse.selectNodes
("*/Packages/Package/Labels/Output/Pages/Page[Uri]").length != 0)
    {
        return false;
    }

    if (xmlResponse.selectNodes("*/Documents/Output/Pages/Page[Uri]").length
!= 0)
    {
        return false;
    }
}
```

```

    }

    return true;

}
    
```

Updated Generation 2 Mailroom and Desktop templates (2.10) already contains this change (see [Project Template Changes](#)).

D-03202 Removed Hardcoded Rules for UPS Consolidated Paperless Invoicing Setup

If any of these previously built-in rules are required for a particular installation, then these must be now manually coded into the project template.

The number of rules have been removed from the UPS Consolidated Ship Request

D-02182 Fixed Issue with Voiding an Emailed Return Shipment

In order to process email returns correctly, it is now required that the delivery method for such be set to "4" in any requests made. The delivery method for tag requests remain as "5", and in the absence of the aforementioned identifiers the returnType will default to "Standard".

The Delivery Method value of "4" has been implemented for email returns.

D-03218 Fixed Issue with Sameday End of Day Manifest Totals

In order to retain your existing customizations in the Outputs folder, it is recommended that you back up the folder and restore any customized files after the product upgrade

The Outputs folder has been updated.

D-03231 Resolved Performance Issues with Stored Procedure GetShipmentsToManifest

Prior to installing this patch, ensure that no duplicate indexes/columns already exist in the database, and/or no custom indexes covering the same columns, as listed on the left (for D-03231), have been created.

The following tables have been updated:

Special Service Table :

added IX\_Special Services\_  
PackageID)

Shipments Table:

added IX\_Shipments\_  
AccountID\_EndOfDayID

Charges Table:

added IX\_Charges\_  
PackageID\_ChargeTypeID\_  
RateTypeID)

Security Keys Table:

added IX\_Security Keys\_  
AccountID)

---

B-04756 Changed Weight Rounding for IOP

The following changes have been updated:

Packages Table - added the Submitted Weight column

---

D-03234 Corrected Scripting Event in Carrier and Special Service Selection JOC

A new project template (Mailroom 2.11) has been accommodated with the flag isLoaded to prevent such situation. The flag is set to "True" once the template has loaded the default location information for the user logged into the template. Rating is only performed, if this flag is "True", therefore, avoiding the issue of rating whilst loaded.

Depending on the timing of the events and the speed of both the client and server, Mailroom template might now perform a rate when it is initially loaded

---

D-03246 Ensure Requests To Custom Rate Engine Are Correctly Encoded

All requests sent to a custom rating engine endpoint have been changed from plain xml to URL-encoded.

All custom rating endpoints must URL decode the request before processing it. Failure to do this change will most likely result in the rating engine not working as expected.

## XML Schema Changes

The following XML Schema changes are included in this release.

Schema Name	Change	Description
Pierbridge Pending Request	Added ValueCurrency to the COD element.	Currency of the value that is to be collected by the carrier when the package is delivered.
PierbridgeReturnRequest	Added Residential element to Sender node	Indicates whether the sender's address is commercial or residential.
PierbridgeInsuranceResponse	Moved URL, Width, and Height elements inside the Pages and Page container elements.	
PierbridgePackItemAddResponse		
PierbridgePackItemPrintResponse		
PierbridgePrintResponse		
PierbridgeReturnResponse		
PierbridgeShipRequisitionResponse		
PierbridgeShipResponse		
PierbridgeSignatureResponse		
PierbridgeAdvanceShipNoticeResponse		
PierbridgeConsolidatedShipmentCloseResponse		