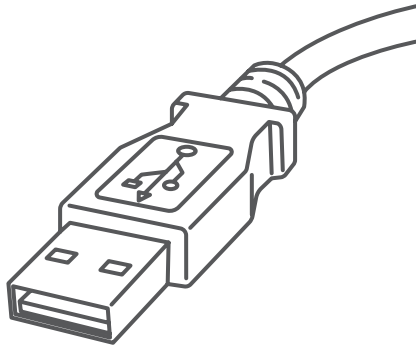


Stand-Alone Network Printer

MAC Installation Instruction

USB Printer Connection



Read Now BEFORE you unpack your equipment

[Continue reading below](#)



Right, let's get your Network Printer up and running quickly...

Let's first get together the things you will need:

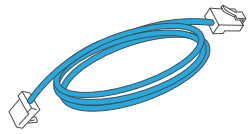
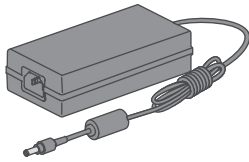
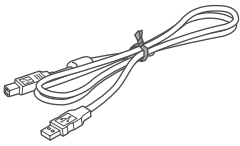
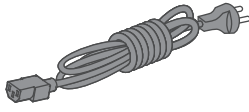
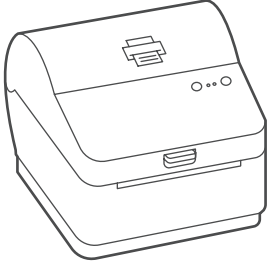
- The box containing your Network Printer.
- A MAC on which you have full admin rights to allow downloading and installing software.
- 1 available USB port on your MAC.

1. Opening the box and unpacking.

Here's a diagram and explanation of the items you should find in your box.

If you have any problems during this installation, refer to 'Troubleshooting'.

Printer



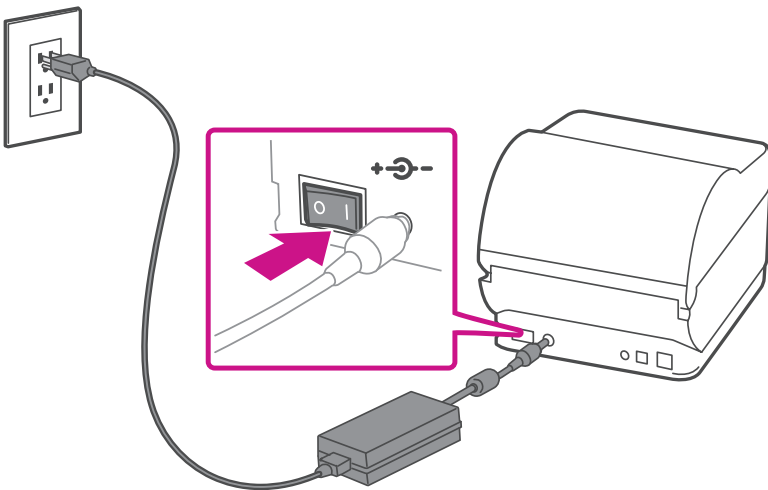
USB

Power Cord

Network Cable
(not used for
USB installation)

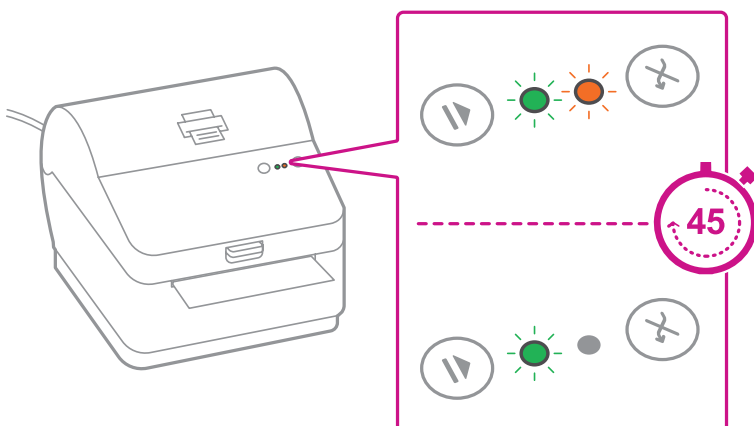
2. Connecting the printer.

Connect the power cord and adapter to your printer (as shown) and switch on.




3. Printer ready.

Wait for approximately 45 seconds until the green light remains constant and the printer is ready.

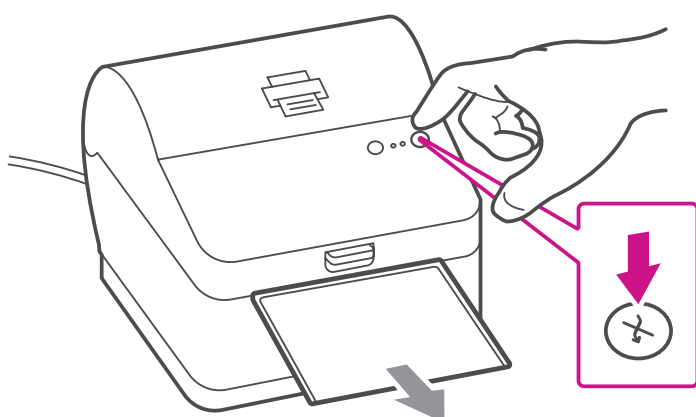


4. Aligning the label roll.

Press the  button and check that the label feeds out correctly.

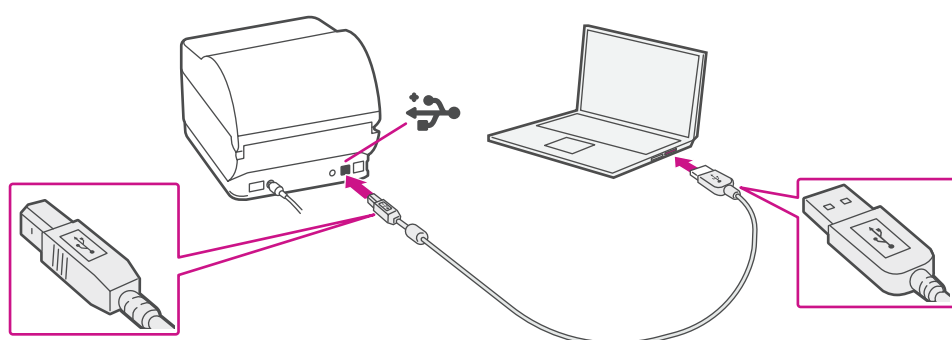
Note: If the label does not feed correctly please refer to label alignment instructions inside the printer top cover.

Tear off the correctly dispensed label.





5. Connecting the printer and driver download.

Connect your printer to your computer with the USB cable.



7. Manually download the printer driver.

1. Go to support.pb.com/workstation
2. Select **Download Drivers for Workstation w1110 Label Printer** in the  Downloads section.
3. Select  in the Download your Mac printer driver section.
4. Double click on the **Gutenprint 5.2.12-pre4.dmg** file.
5. Press **Continue**.
6. Press **Agree** and then **Continue**.
7. Press **Install**.
8. The installer will prompt you for your Mac administrative login. Enter your administrator username and password and select **Install Software**.
9. When complete, it will say **The installation was successful**. Select **Close**.
10. Select **System Preferences** from the **Apple** menu.
11. Open **Printers & Scanners**.
12. Select the plus sign + and select **"Add Printer or Scanner..."**.
13. The MAC system will auto-detect the USB connection to the Performance Series printer(s).
14. Click on **"Select Software..."** and choose the **Datamax-O'Neil driver**.
15. Scroll down the list or, alternatively, you can type **"Datamax"** and the driver should display. Select **"Datamax-ONeil w1110-CUPS+Gutenprint v5.2.12-pre4"** and click **"OK."**
16. Once the driver software is installed, select the **"Printer"** tab at the top of the screen, and click on **"Print Test Page"** to print a test page.

When printing shipping labels on the w1110 printer:

- In the Safari printer dialog box, you must select the Chose paper source by PDF page size box before printing.
- In the Adobe PDF printer dialog box, you must select 4x6 in label from the Paper Size menu.



Troubleshooting

Printing problems on Datamax w1110

If you experience problems with a Datamax w1110 printer, such as poor print quality, misaligned labels, jams, or flashing LED indicator lights, ensure that the roll is properly installed in the printer.

If the labels are blank, the roll may be loaded upside down.

The two green brackets in the Datamax printer are spring loaded to keep the roll in place. Slide the green brackets apart to place the roll between them with the adhesive labels on the top and the disposable material on the bottom.

If you're still having trouble, then visit www.pitneybowes.com/ca/en/support and select Errors & Troubleshooting.



* A W 3 2 6 8 7 R E V A *

AW32687 Rev. A 05/18
©2018 Pitney Bowes Inc.
All Rights Reserved

pitney bowes 

5500 Explorer Drive
Mississauga, ON L4W 5C7
www.pitneybowes.com/ca/en