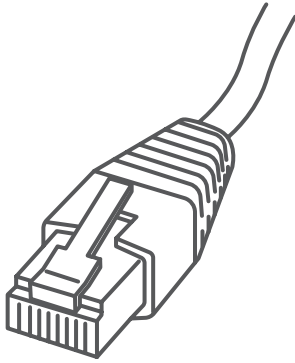


# Stand-Alone Network Printer

Microsoft Windows Installation Instruction  
Network Printer Connection



Read Now BEFORE you unpack your equipment

[Continue reading below](#)



## Right, let's get your Network Printer up and running quickly...

Let's first get together the things you will need:

- The box containing your Network Printer.
- A PC on which you have full admin rights to allow downloading and installing software.

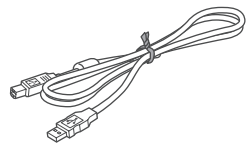
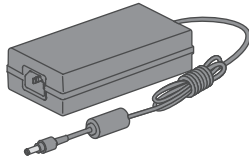
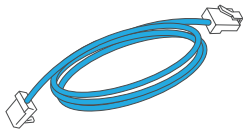
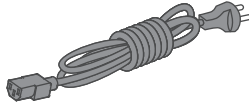
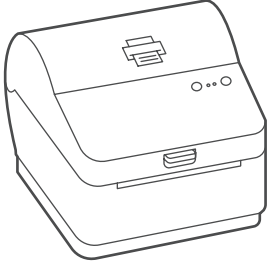
---

# 1. Opening the box and unpacking.

Here's a diagram and explanation of the items you should find in your box.

If you have any problems during this installation, refer to 'Troubleshooting'.

## Printer



Network Cable

Power Cord

USB  
(not used  
for network  
installation)

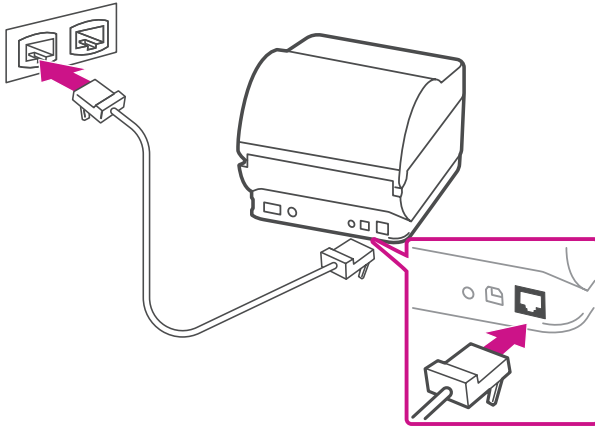
---

# 2. Connecting the printer.

Connect your Network cable to your printer and Network socket.

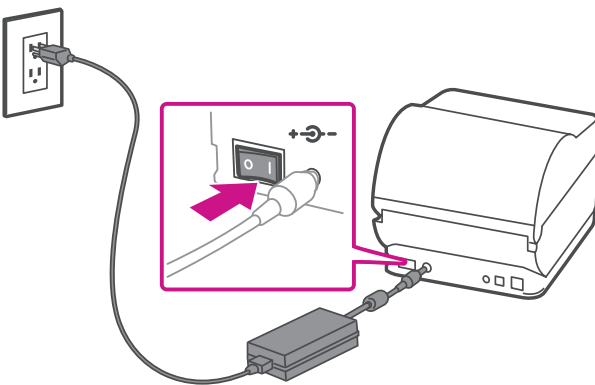
Connect the power cord and adapter to your printer (as shown) and switch on.

## Network Cable



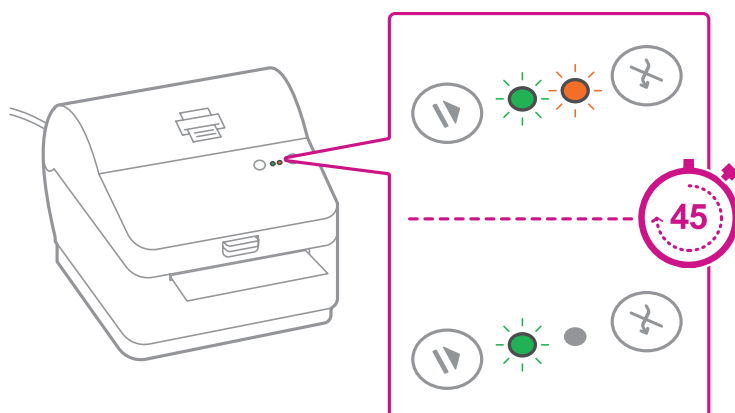
---

## Power Cable



### 3. Printer ready.

Wait for approximately 45 seconds until the green light remains constant and the printer is ready.

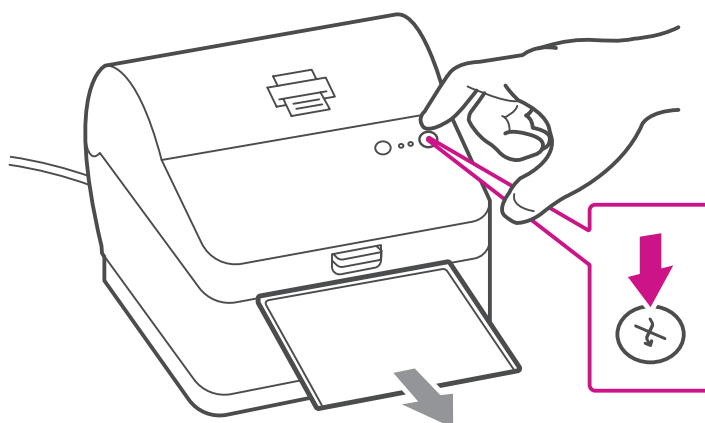


### 4. Aligning the label roll.

**Press** the (X) button and check that the label feeds out correctly.

Note: If the label does not feed correctly please refer to label alignment instructions inside the printer top cover.

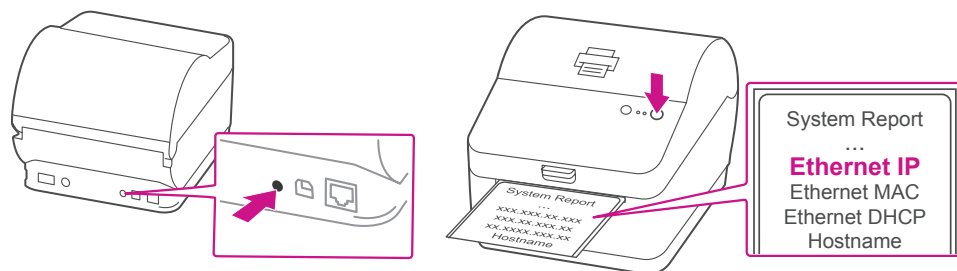
Tear off the correctly dispensed label.



### 5. Printing a system report.



Print the System Report to obtain the IP address assigned to the label printer.

1. To print the system report simultaneously press the (X) button on the front of the label printer and the recessed button on the back of the printer with a suitable object such as a pencil or similar.
2. Keep the printed report that will be needed later in the installation process.



---

## 6. Downloading the printer driver.

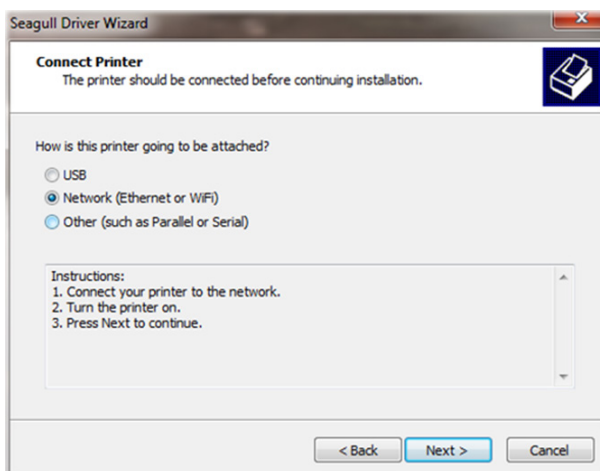
1. Go to [support.pb.com/workstation](http://support.pb.com/workstation)
2. Select **Download Drivers for Workstation w1110 Label Printer** in the  Downloads section.
3. Select  in the Download your Windows printer driver section.
4. Select **Run** or **Open** dependant on your browser.
5. Accept the licence agreement and follow the on screen prompts to install.



---

## 7. Connecting to the printer.

Select **Network** and press **Next**.

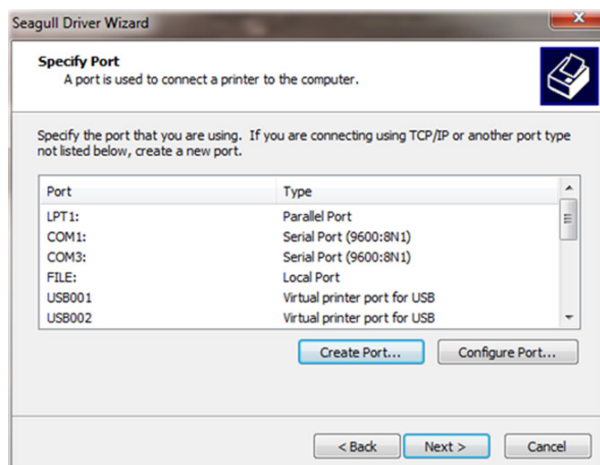


Then select Datamax-O'Neil w1110 Printer model when prompted and select **Next**.

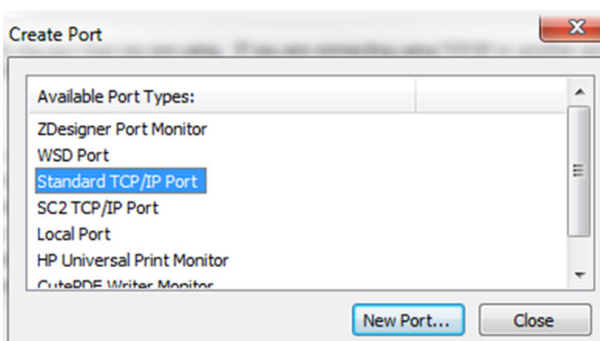
---

## 8. Specifying a port.

Select **Create Port**.



Then Select **TCP/IP Port** and click **New Port**.



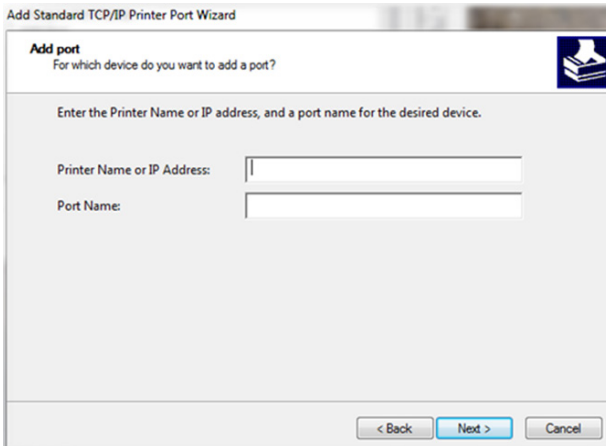
---

## 9. Printer port wizard.

Select **Next** to run the Printer Port Wizard.

Enter the Ethernet IP from the system report printed in step 5 and Select **Next**.

Note: The Port Name will automatically be populated with a default value.



Windows Wizard will automatically find the device. If not found, Select **Generic Network Card** from the drop down menu and Select **Next**.

Select **Finish** to complete the Printer Port Wizard and to return to driver installation.

Note: The driver and port name will now show what was entered in the screen above.

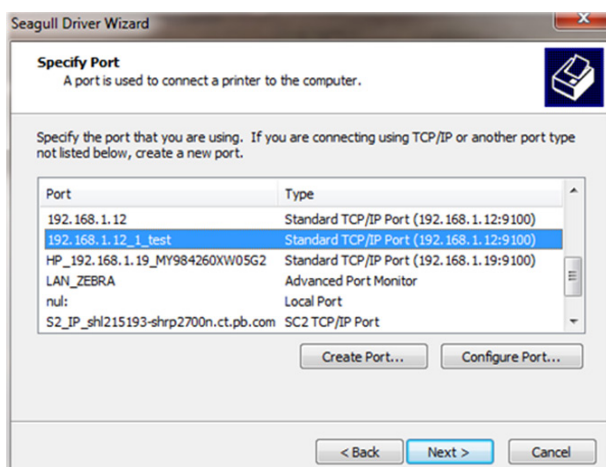
Select **Close**.

---

## 10. Confirming the port.

The wizard will return to the Specify Port screen.

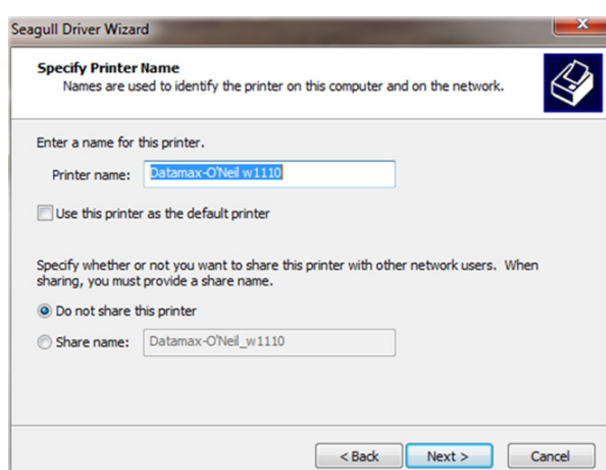
Use the vertical scroll bar to view and confirm the new port is now in the list and select Next.



---

## 11. Accepting the printer name.

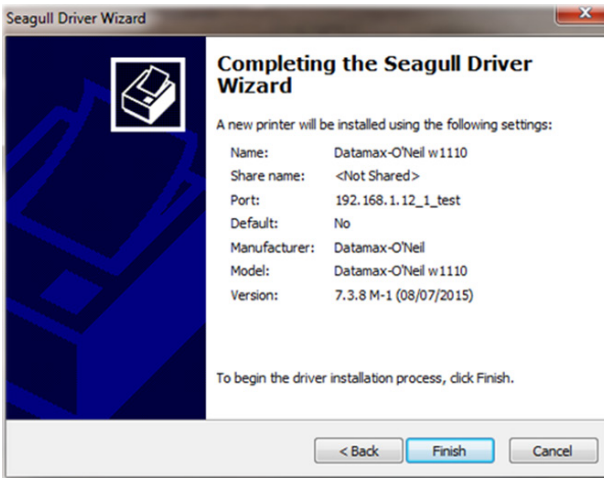
Select **Next** to accept the default printer name.



---

# 12. Completing printer setup.

Select **Finish** to complete the wizard and begin using your printer.



---

# 13. Test print.

**Your SendKit is now connected.**

To test your printer is working correctly follow the steps below.

## On a PC

Go to your Control Panel  
Select Devices & Printers  
Double click on the Printer  
(DataMax-O'Neil w1110)

1. Select Printer from the menu bar
2. Select Properties
3. Select General
4. Select Print Test Page.

Check that your label has printed correctly.

If you're still having trouble, then visit [www.pitneybowes.com/ca/en/support](http://www.pitneybowes.com/ca/en/support) and select Errors & Troubleshooting.



\* A W 3 2 6 8 5 R E V A 8

AW32685 Rev. A 05/18  
©2018 Pitney Bowes Inc.  
All Rights Reserved

pitney bowes 

5500 Explorer Drive  
Mississauga, ON L4W 5C7  
[www.pitneybowes.com/ca/en](http://www.pitneybowes.com/ca/en)