

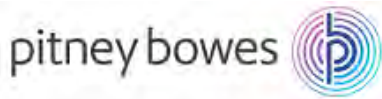
StreetPro Global Installer

User Guide



Information in this document is subject to change without notice and does not represent a commitment on the part of the vendor or its representatives. No part of this document may be reproduced or transmitted in any form or by any means, electronic or mechanical, including photocopying without the written permission of Pitney Bowes Software Inc., 350 Jordan Rd., Troy, NY 12180.

© 2019 Pitney Bowes Software Inc. All rights reserved. MapInfo®, MapInfo Professional® and MapXtreme® are registered trademarks of Pitney Bowes Limited and/or its affiliates.



Products named herein may be trademarks of their respective manufacturers and are hereby recognised. Trademarked names are used editorially, to the benefit of the trademark owner, with no intent to infringe on the trademark. Adobe Acrobat® is a registered trademark of Adobe Systems.

© 2006-2019 TomTom. All rights reserved. This material is proprietary and the subject of copyright protection, database right protection and other intellectual property rights owned by TomTom or its suppliers. The use of this material is subject to the terms of a license agreement. Any unauthorized copying or disclosure of this material will lead to criminal and civil liabilities.



- for TomTom® MultiNet® data of Austria: "© BEV, GZ 1368/2003".
- for TomTom® MultiNet® data of Denmark: "© DAV, violation of these copyrights shall cause legal proceedings."
- for TomTom® MultiNet® data of France: "© IGN France." "Georoute © IGN France.", "Michelin data © Michelin 2009."
- for TomTom® MultiNet® data of Northern Ireland: "Ordnance Survey of Northern Ireland."
- for TomTom® MultiNet® data of Norway: "© Norwegian Mapping Authority, Public Roads Administration / ©Mapsolutions."
- for TomTom® MultiNet® data of Russia: "© Roskartographia".
- for TomTom® MultiNet® data of Switzerland: "© Swisstopo."
- for TomTom® MultiNet® data of The Netherlands: "Topografische ondergrond Copyright © dienst voor het kadaster en de openbare registers, Apeldoorn 2006." for TomTom® MultiNet® data of the United Kingdom (excluding Northern Ireland).

This product includes mapping data licensed from:

- Survey with the permission of the Controller of Her Majesty's Stationery Office. Ordnance Survey © Crown Copyright 2013. All right reserved. Licence number 100020348."
- UK TMC codes: "The RDS-TMC traffic information with TMC location table version number (6G) 3.4, 4.5 and 4.6 from ITIS contained in this product is derived of the ITIS TMC location table and is subject to the terms of limitation or exclusion of liability of the license agreement between TomTom and ITIS. Usage of this TMC table is subject to contract to be made

LICENSE

The product is supplied under the terms and conditions specified in the separate Licence Agreement(s). Failure to comply with the terms

and conditions may lead to the termination of the licence(s). Customers wishing to install or copy the Data onto more than one computer should apply for a Multi-user Licence. Customers wishing to provide a bureau service for others or to use the Data for the benefit of or on behalf of any others should apply for a Bureau Licence or a Special Licence.

Pitney Bowes is making Adobe Acrobat® Reader (the "Software") available to you as a convenience to allow you to easily view and print the documentation in .pdf file format. This should not be construed as an endorsement of Adobe Systems Incorporated or its products. Use of the Software is governed by the terms and conditions of the end user license agreement which is included in the Software. Pitney Bowes makes no representations or warranties, express or implied, with respect to the accuracy, reliability or completeness of the Software. The entire risk as to the use of the Software is assumed by you. In no event shall Pitney Bowes be liable to you or any other person, regardless of the cause, for the effectiveness or accuracy of the Software or for any special, indirect, incidental or consequential damages arising from or occasioned by your use of the Software, even if advised of the possibility of such damages.

Further information

Pitney Bowes Software Inc.
350 Jordan Rd.
Troy, NY 12180
+1 800-367-6950

E-mail: software.support@pb.com

<http://www.pb.com/software>

January 2019

Table of Contents

1 - Installation	5
Compatibility	6
Getting Started	6
Installation	8
GUI Installer	8
Silent Installer	16
About StreetPro Data	17
Uninstalling StreetPro	18
Spectrum Spatial Support	21

1

1 – Installation

This document provides instructions on how to use the StreetPro Global Installer for installing the StreetPro Data.

Note: For illustration purposes the screenshots included in this guide are from a Windows system. However, the installation steps remain the same for Linux based systems as well.

In this chapter

Compatibility	6
Getting Started	6
Installation	8
About StreetPro Data	17
Uninstalling StreetPro	18
Spectrum Spatial Support	21

Compatibility

The StreetPro Global Installer has been developed to work on both Windows as well as Linux platforms. A separate installer file is provided for each operating system:

- `streetpro_installer_vx*_windows.exe` for the Windows version
- `streetpro_installer_vx*_linux.bin` for the Linux version

*Here x denotes the release version of the installer. For example, v1 represents the first version of the installer executable released.

Getting Started

The installer zip consists of the installer executables (.exe for Windows and .bin for Linux) and this user guide. For example **streetpro_installer_v3.zip** would consist of **streetpro_installer_v3_windows.exe**, **streetpro_installer_v3_linux.bin** and **StreetPro_Global_Installer_UserGuide.pdf**. Place the installer executable in the same directory as the StreetPro data zips that are required to be installed.

Points to be noted:

- The StreetPro Global Installer can be used both as a GUI Installer as well as a Silent Installer. The corresponding instructions for these two modes are provided under the [GUI Installer](#) and the [Silent Installer](#) sections of this document
- Before installing the data, please ensure that the data zips that are required to be installed should be present in the same directory as the installer executable
- Please ensure that no other .zip files (other than StreetPro data zips) should be present in this directory
- The same installer executable can be used with both StreetPro Classic as well as StreetPro Display products, but not simultaneously. Please make sure that you place either Classic or Display data zips with the installer executable
- StreetPro data for each country (except USA, Canada and Australia) is available in the form of zipped archives with the following nomenclature - **ISO3_CLASSIC/DISPLAY_MMYYYY.zip**
- StreetPro data for USA and Canada is available in the form of individual state/provinces zips and also as full country data **bundles** containing the individual state/province zips, with the nomenclature as - **ISO3_XX_CLASSIC/DISPLAY_MMYYYY.zip** for state wise zips or **ISO3_ALL_BUNDLE_CLASSIC/DISPLAY_MMYYYY.zip** full country bundle
- StreetPro data for Australia is available in the form of a full country zipped archive **ISO3_ALL_CLASSIC/DISPLAY_MMYYYY.zip** and also as individual state/provinces zips with the nomenclature as

ISO3_XX_CLASSIC/DISPLAY_MMYYYY.zip
 or ***ISO3_XXX_CLASSIC/DISPLAY_MMYYYY.zip***

Where,

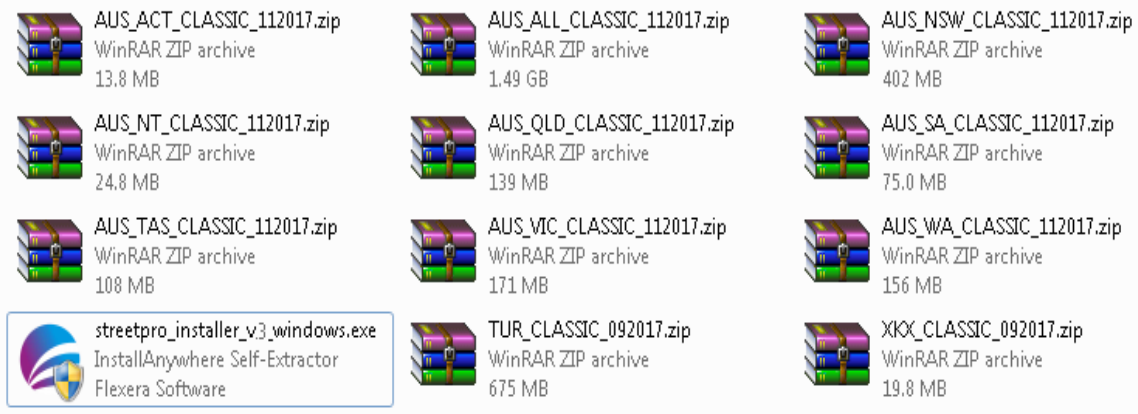
ISO3 is the 3 letter ISO code for the country

XX or XXX is the 2 or 3 letter state/province code for USA, Canada or Australia

MMYYYY is the corresponding data vintage Month and Year

BUNDLE is a zipped archive containing individual USA or Canada state/province zips

- The full country bundles for USA and Canada, e.g. *USA_ALL_BUNDLE_CLASSIC_092017.zip*, need to be extracted to expose the individual state/province zips before launching the installer. The state/province zip files thus extracted should not be unzipped.
- The same installer executable will work for both StreetPro Classic as well as StreetPro Display products, but not simultaneously. Make sure that you place either the Classic or the Display data zips in the same directory as the installer executable before launching. An illustration is given below:



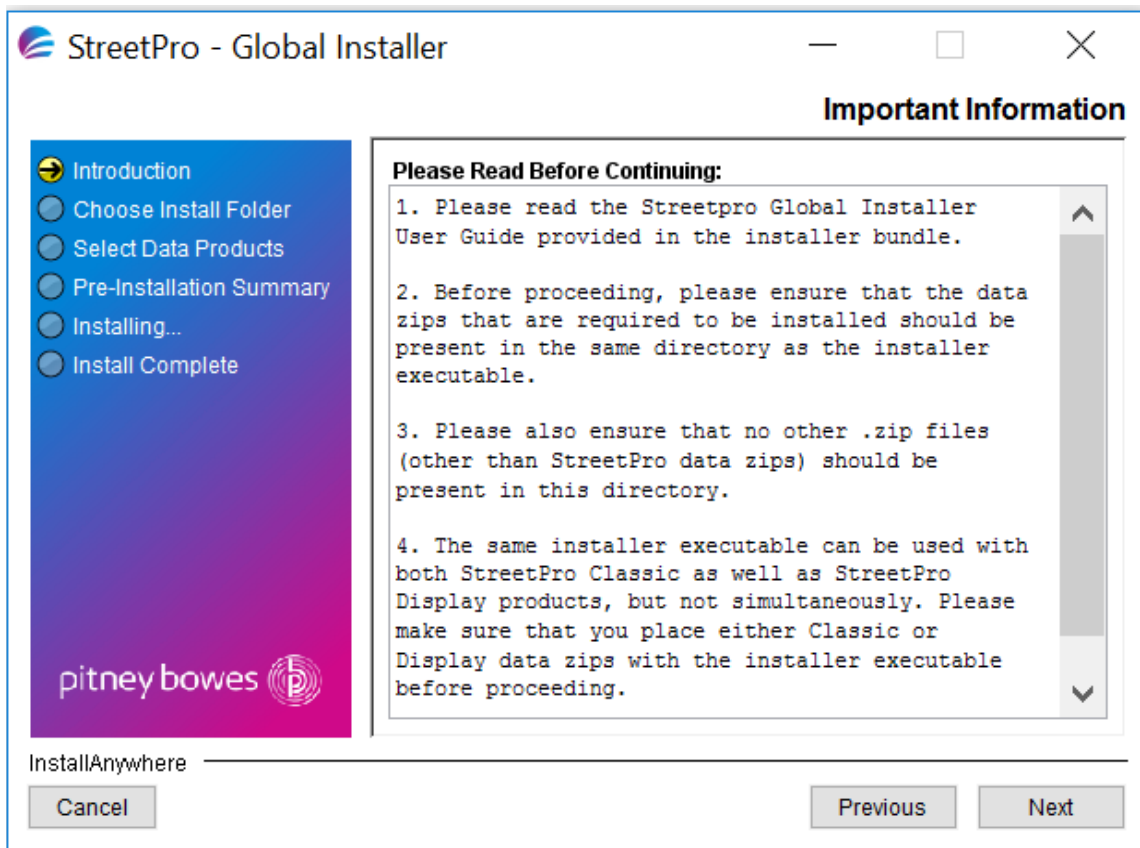
Installation

To install the StreetPro data you can use the StreetPro Global Installer both as a **GUI Installer** or even as a **Silent Installer**, as explained below:

GUI Installer

1. Launch the installer executable (.exe or .bin).
2. On the **StreetPro - Global Installer** window, go through the basic installation introduction and click **Next**.



3. Introduction - Read the on screen guidelines before proceeding and click **Next**.

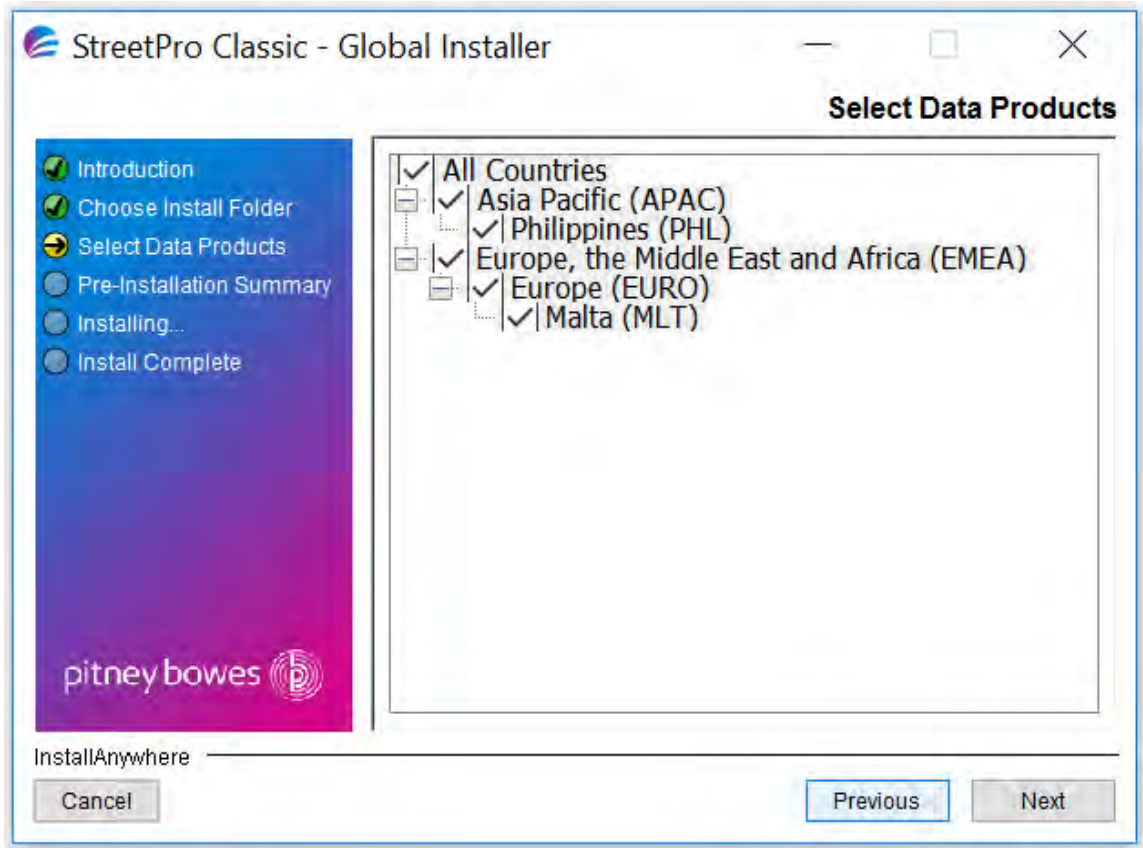
4. Introduction - Read and accept the **Licence Agreement** and click **Next**.



- 5. Choose Install Folder**– Click **Next** to proceed with the default installation directory or click **Choose** to select a different directory. Click **Next** and follow the on screen instructions to proceed.



- Select Data Products** - Select the required country set from the displayed drop-down list and click **Next**.



- 7. Pre-Installation Summary** - Review the pre-installation summary and click **Install** to proceed.



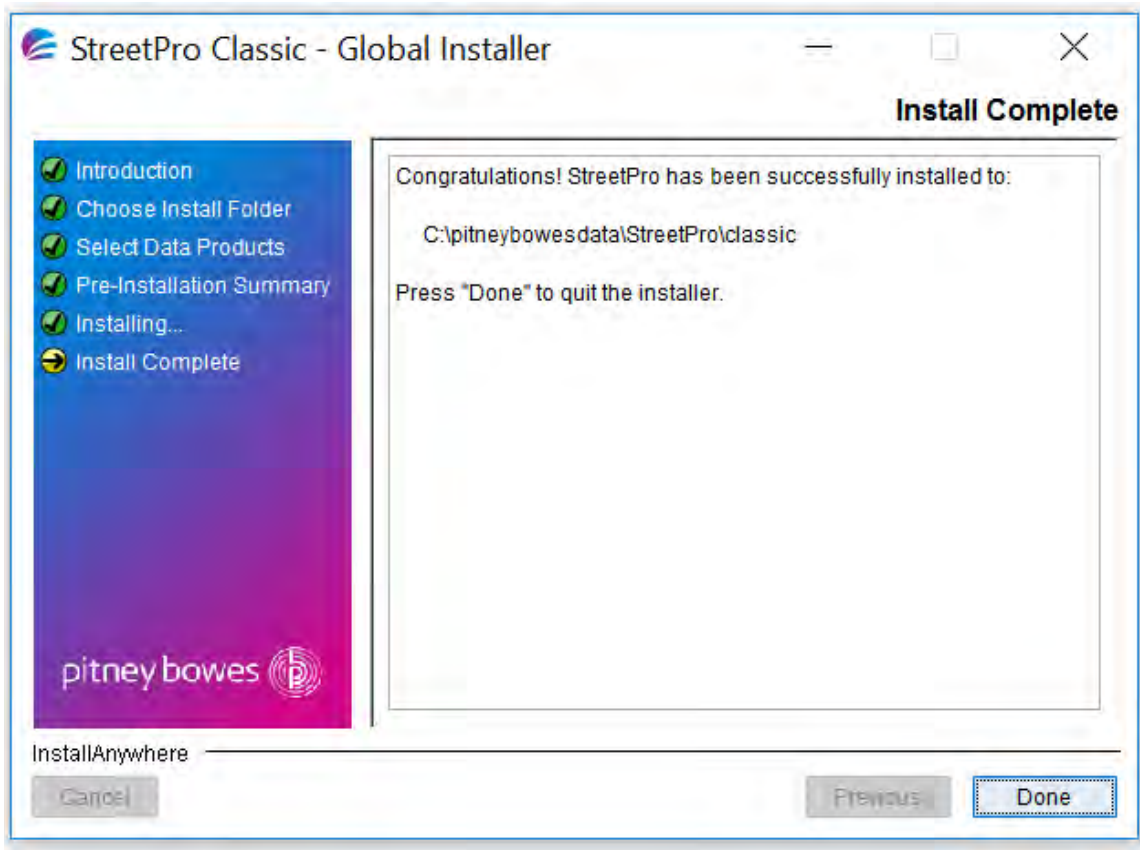
Note: The installer prompts accordingly if the required disc space is greater than the available disc space. In this case follow the on screen instructions.

8. **Installing StreetPro**– the installation will start and user can view the progress on this panel.



Note: If you click the **Cancel** button, the **Cancel Installation** dialog box will open which will allow you to resume or quit the process.

9. **Install Complete**– After reading the post installation summary click **Done** to finish the process.



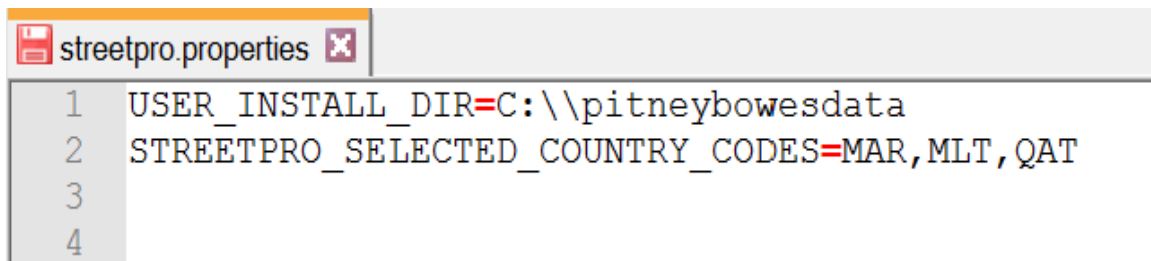
Note: An installation log can be found at **<StreetPro Location>_uninstall\ Logs**.

Silent Installer

The silent install process for the StreetPro Global Installer allows you to pre-configure the installation process so that it runs without user intervention. Instead of responding to prompts for information such as the installation location and country data zips to install, you specify these responses in a properties file which the installer uses instead of user prompts.

This can be done by providing the user inputs by means of a properties file, as discussed below.

1. Create a file named *streetpro.properties* in any text editor like Notepad etc.
2. Write the highlighted content in the file and save the same:
 - The destination directory where StreetPro is required to be installed, `USER_INSTALL_DIR=<destination directory>` (use "\\" while specifying the directory path) e.g. **`USER_INSTALL_DIR=C:\\pitneybowesdata`**
 - The datasets required to be installed, `STREETPRO_SELECTED_COUNTRY_CODES=<comma separated list of ISO3 codes of the country datasets required to be installed>` (avoid space in the list of ISO3 codes) e.g. **`STREETPRO_SELECTED_COUNTRY_CODES=MAR,MLT,QAT`**.
 - Following is an illustration of a typical *streetpro.properties* file thus created:



```
streetpro.properties
1 USER_INSTALL_DIR=C:\\pitneybowesdata
2 STREETPRO_SELECTED_COUNTRY_CODES=MAR,MLT,QAT
3
4
```

3. To run the installer in silent mode, place *streetpro.properties* in the same directory as the StreetPro Global Installer executable and run the following command:
`<streetpro_installer_executable_filename> -i silent -f streetpro.properties`
e.g. **`C:\>streetpro_installer_v3_windows.exe -i silent -f streetpro.properties`**
Here, `-i` instructs the control to run the installer in silent mode and `-f` instructs the control to use *streetpro.properties* as the input file.

Note: Click [here](#) to know more about the command line arguments that can be applied to install or uninstall StreetPro in silent mode.

About StreetPro Data

Following is an illustration of the data installed in your system after a successful installation:

Name	Date modified	Type
_basemaps	1/23/2018 12:46 PM	File folder
_doc	1/23/2018 12:46 PM	File folder
_jre	1/23/2018 12:46 PM	File folder
_tools	1/25/2018 6:04 PM	File folder
_uninstall	1/23/2018 12:46 PM	File folder
Canada	11/6/2017 3:18 PM	File folder
Malta	1/18/2018 11:44 AM	File folder
Philippines	1/23/2018 12:46 PM	File folder

The installed content, other than the country wise StreetPro data folders, is explained below:

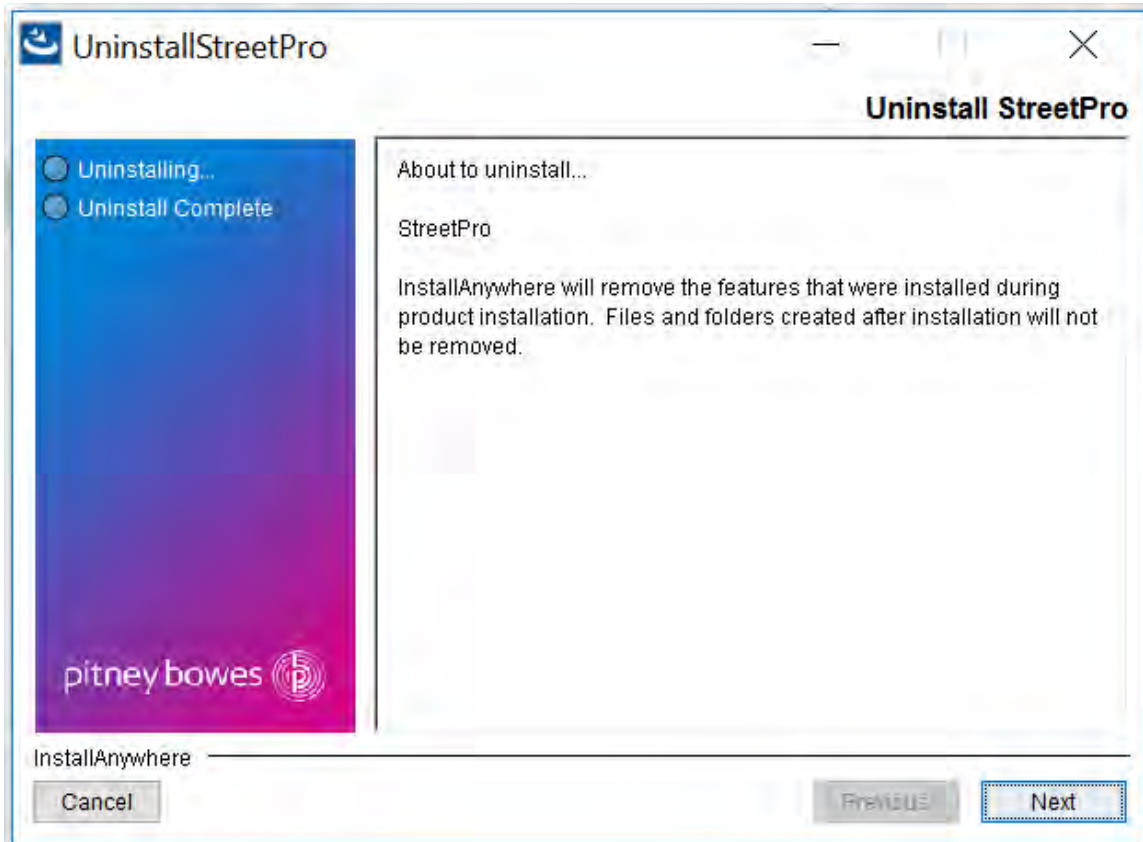
- the **_basemaps** directory contains basemaps with the world, ocean and marine labels information and is required to support the country wise StreetPro maps installed
- the **_doc** directory contains a link file leading to the Global StreetPro documentation web page
- the **_tools** directory contains the supporting files for the *Autoloader* tool that assists in the easy loading of StreetPro USA and StreetPro Canada maps
- The **_uninstall** directory contains the supporting files for the Uninstaller program
- The **_jre** directory contains the JRE for supporting the Uninstaller program

For more information about the installed StreetPro datasets please refer to the documentation available at **<StreetPro Location>_doc**. Country specific documents can be found at **<StreetPro Location>\<country>\sub-region name>_docs**. For example, `C:\pitneybowesdata\StreetPro\classic\Kosovo_docs` or `C:\pitneybowesdata\StreetPro\classic\Australia\ACT_docs`.

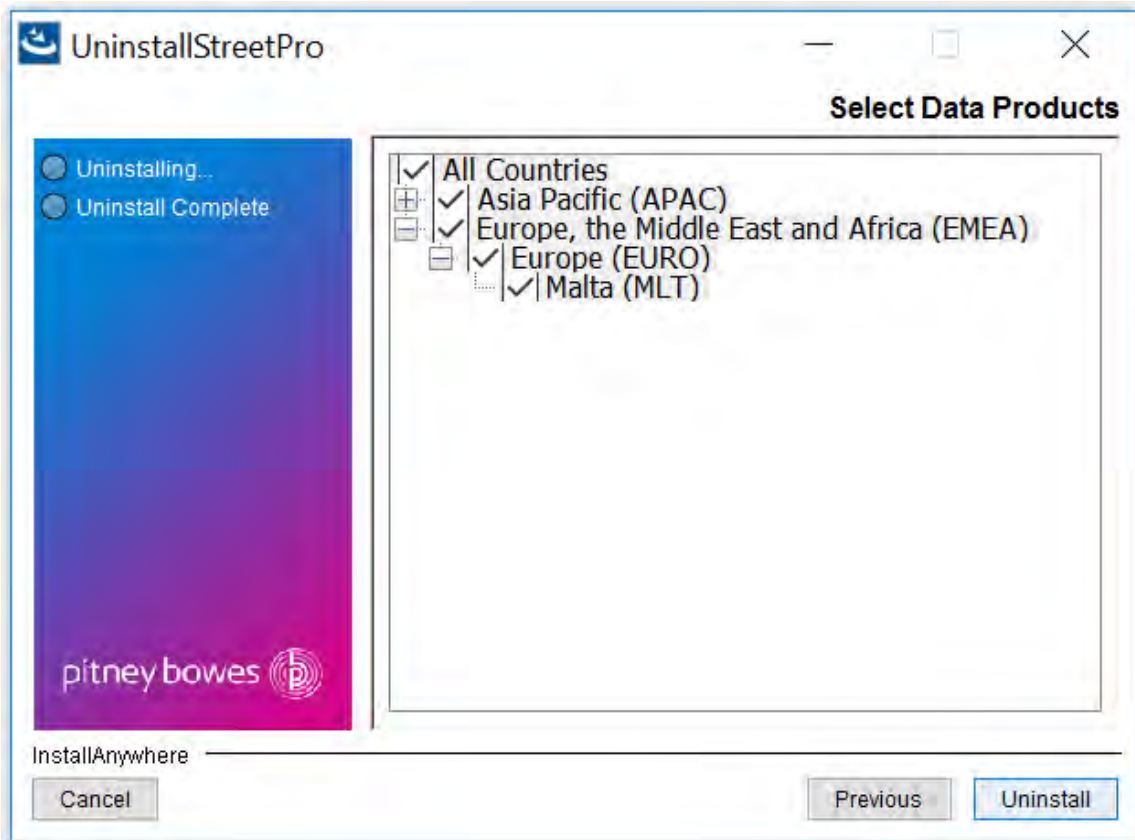
Uninstalling StreetPro

Following are the steps to uninstall the StreetPro data:

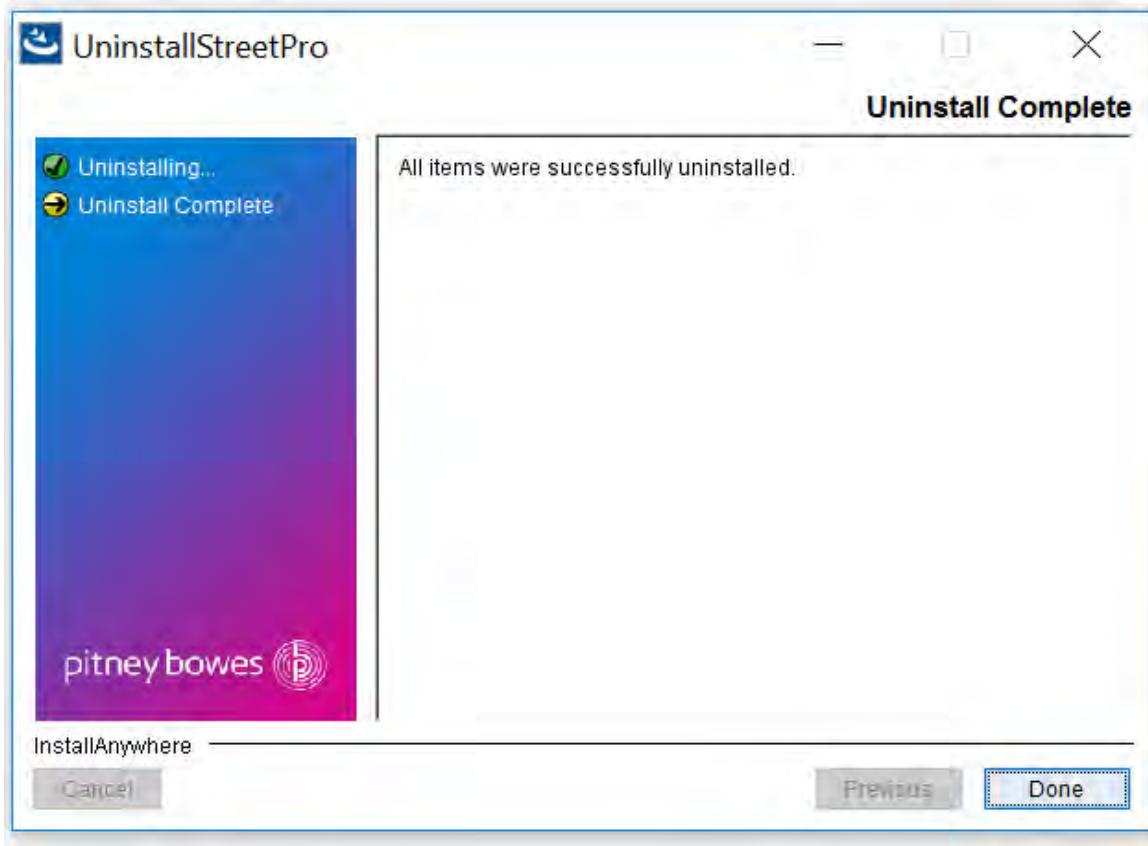
1. To uninstall the StreetPro datasets, launch the **UninstallStreetPro.exe** from **<StreetPro Location>_uninstall** and click **Next**. On a Windows machine the StreetPro uninstaller can also be launched through the **Add or Remove Programs** in the Windows **Control Panel**.



2. On the **Select Data Products** page select the datasets that are required to be uninstalled and click **Uninstall**.



3. Wait for the complete uninstallation and click **Done** to exit.

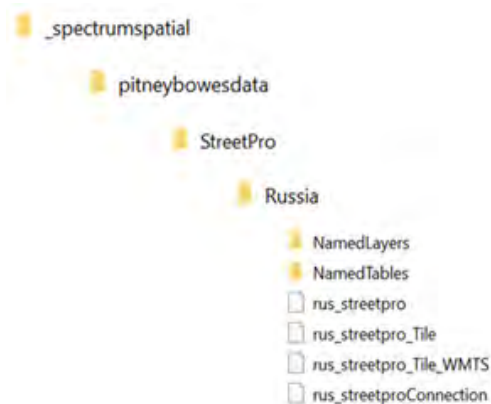


Note: Certain data files/folders for example, `_basemaps`, `_tools`, etc. do not get removed even after a complete run of the uninstaller. These residual files/folders may be deleted manually if not required.

Spectrum Spatial Support

Spectrum Spatial is an enterprise location intelligence platform designed to provide organizations with a suite of broadly applicable location capabilities, including spatial analysis, geoprocessing, routing, geocoding, and mapping. These capabilities can be combined with a wide range of data management solutions in Spectrum™ Technology Platform and an extensive data catalog to solve a diverse variety of business problems. To know more about Spectrum Spatial, click [here](#). For the users to automatically map the country within the Spectrum platform, a new folder, `_spectrumspatial`, has been added under each country folder. The default installation path is **C:\pitneybowesdata\StreetPro\Country_spectrumspatial**. If you wish to install the data at another location then, that must be indicated at the time of installation.

The folder structure with an example for the Spectrum Spatial files is shown below.



The **_spectrumspatial** folder contain all the files necessary for Spectrum Spatial to display the StreetPro maps. These files need to be imported into the Spectrum Spatial repository by using the Administration Utility that is downloaded from the Spectrum landing page. This utility is a command line tool referred to as the CLI (Command Line Interface). Once the tool is downloaded and the .zip file expanded, run the tool. On windows this is cli.cmd and other platforms cli.sh. It requires Java to run. Full instructions for the tool are [here](#).

i You can import the **_spectrumspatial** folder only on Spectrum 12.0 SP1 or higher.

There are only two steps needed for importing the StreetPro map settings after starting the CLI.

1. Connect to your server. Run - `connect --h yourserver:yourport --u admin --p yourpassword`

StreetPro Global Installer User Guide

For example,

```
connect --h localhost:8080 --u admin --p admin
```

2. Run the limrepo command pointing to your _spectrumspatial folder. Run - limrepo --s <path to the _spectrumspatial folder>.

For example,

```
limrepo import --s  
E:\SpatialFiles\pitneybowesdata\StreetPro\Russia\_spectrumspatial.
```

Here, "--s" denotes the source file path.

Note: If the data bundles and the installer is not downloaded in the same folder then the connection file need to edited with the current data path while running the installer.

Once the import is complete you can view the StreetPro stylized namedMaps(s) in three different ways,

1. **Spatial Manager** - This web application is launched from the Spatial section of the Spectrum landing page, under the "Utilities" tab. An example is shown below displaying a country data mapped.
2. **Spatial Analyst** - a namedTile (countryISO3_streetpro_tile) can be added using the Spectrum Spatial Analyst Administration Console.
3. **MapInfoProfessional** - using Open > Web services (WMTS Table), to add your spectrum server and select countryISO3_streetpro_tile_WMTS.