



EngageOne Connect 2.2

Configuring the administrative fields of Connect

EngageOne Connect 2.2 has a new settings page accessible by the system Admin to set the system's configuration fields through the UI

To access these go to Settings → Configuration



The configuration settings page contains configuration fields, values and description for each field

Configuration				
	Name	Value	Type	Info
Edit	PasswordComplexity	0	int	Any = 0, CharactersAndNumbers = 1, LowerUpperAndNumbers = 2, LowerUpperNumbersAndSpecial = 3
Edit	PasswordMinLength	6	int	Minimum password length
Edit	DashboardCampaignOrderBy	LastDeliveredDate	string	Default Communication order at dashboard page, optional fields "Name ReleaseDate LastDeliveredDate"
Edit	ServerName	DEMOBANK	string	Server name
Edit	ColumbaVirtualDirectory	Columba	string	Columba virtual directory
Edit	Protocol	http	string	Server protocol "http/https"
Edit	ITGuyEmail	support@activepath.com	string	Email address for System administrator support
Edit	USERID	RECORDID	string	RECORD id display name for mandatory field

Click Edit to change a field's value. Then click Update to apply or Cancel to go back

[Update](#)
[Cancel](#)
PasswordComplexity

int
Any = 0, CharactersAndN

Configuration Fields Reference

Below is a list of the available configuration fields:

Name	Info	Type
PasswordComplexity	Complexity of the passord for user application Any = 0 CharactersAndNumbers = 1 LowerUpperAndNumbers = 2 LowerUpperNumbersAndSpecial = 3	int
PasswordMinLength	Minimum password length for Application user password	int
DashboardCampaignOrderBy	Default Communication order at dashboard page optional fields "Name ReleaseDate LastDeliveredDate"	string
FrontEndBaseUri	Front End base URI, FQN to front end url Example: http://<HOSTNAME>/Site/	string
USERID	Display name for mandatory field, Curent value RECORD	string
PHONE	Display name for mandatory field PHONE	string
FIRSTNAME	Display name for mandatory field FIRSTNAME	string
EMAIL	Display name for mandatory field EMAIL	string

LASTNAME	Display name for mandatory field LASTNAME	string
IgnoreAnalyticsReportHosts	A list of hosts that should be ignored during analytics report the list should be separated by ;	string
IgnoreAnalyticsReportInSeconds	The duration in seconds between two identical (analytics reports that should be ignored reported from the same recipient from the same deice)	int
ShowArchivingConfiguration	Show archiving configuration at delivery page (Post delivery)	bool
DefaultPrimaryKey	The default key to be use as primary key for archiving (Post delivery)	string
EncryptChannelPostDelivery	Should Email data be encrypted during post delivery process or immediately	bool
EncryptAttachmentPostDelivery	Should Attachment data be encrypted at post delivery process or immediately	bool
LockAccountPeriod	Define the period in minutes for user account lock after failure login	int
AccessFailedAccount	Define number of failed attempts to login to the system	int
Report To Audit	Report events to audit system set true is wishes to report events	bool
SysLog Address	SysLog IP Address Where Audit events reported to	String
DeleteDraftCustResIntervalMin	Interval in minutes for deleting un assigned custom object	int
AccessFailedAccount	Define number of failed attempts to login to the system, after that the account will be locked for a duration that is defined below	Optional value number
LockAccountPeriod	This entry defines the duration of time for account lock	Optional value number
EncryptChannelPostDelivery*	Encrypt Email data that stores at database during post delivery process, until than the data will be compressed False = encrypt Email data that stores at database immediately during composition process	(Optional values True False) True
EncryptAttachmentPostDelivery*	Encrypt Email attachment that stores at database during post delivery process, until than the data will be compressed False = encrypt Email attachment that stores at database immediately during composition process	(Optional values True False) True

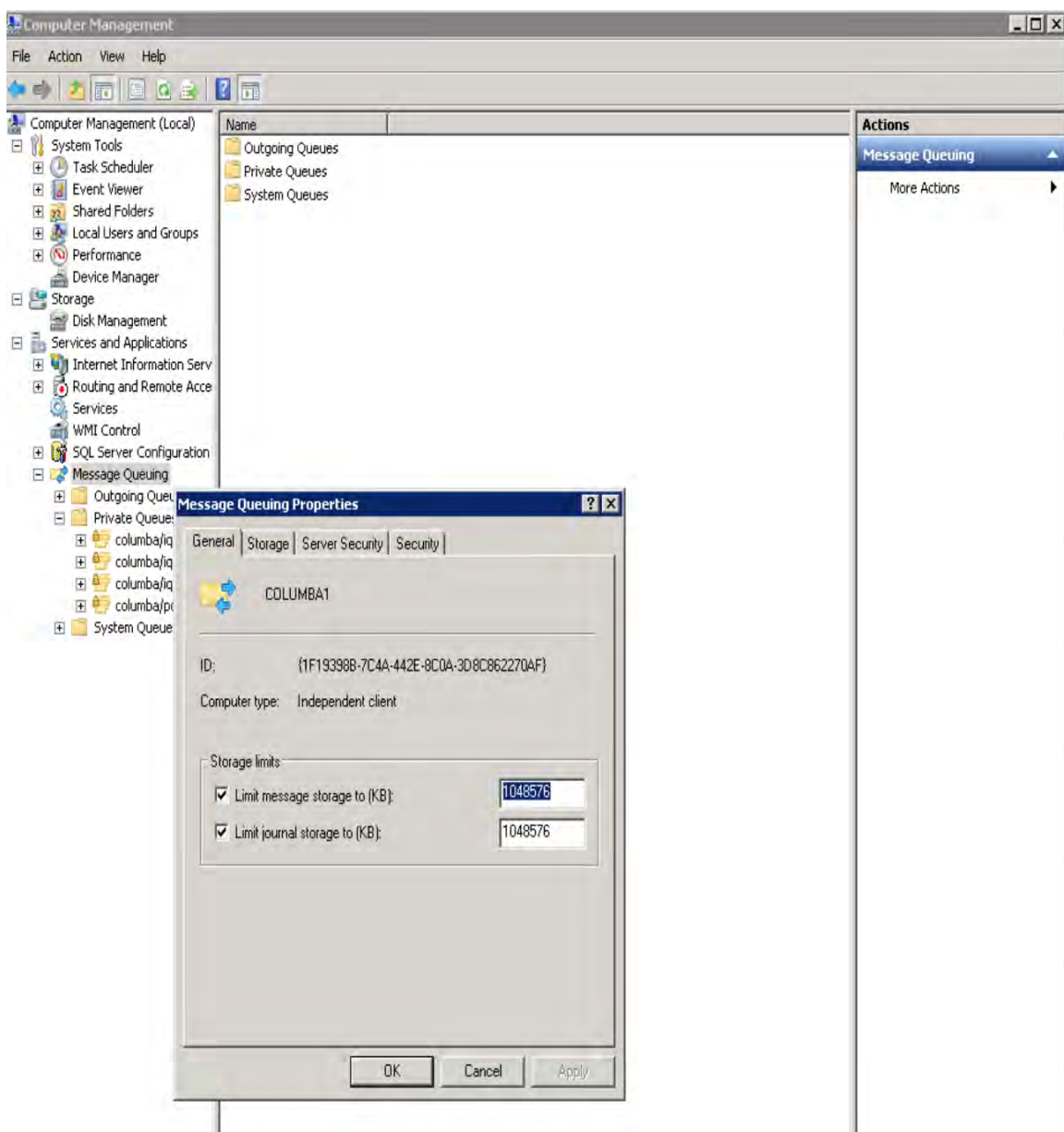
*Encryption of data or attachment during post delivery

This will increase performance while sending large amount of emails

If one of the above is true and sending large amount of emails It is highly recommended to allocate disk space for MSMQ storage to be able to hold at least 20GB of data

The below screenshot shows a default disk allocation of 1.04 GB

You can uncheck the option of “Limit of journal storage”



© Copyright 2018. All rights reserved worldwide.

The information contained in the documentation and/or disk is proprietary and is subject to all relevant copyright, patent, and other laws protecting intellectual property, as well as any specific agreement protecting EngageOne Connect's rights in the aforesaid information. Neither this document nor the information contained in the documentation and/or disk may be published, reproduced, copied, modified or disclosed to third parties, in whole or in part, without the express prior written permission. In addition, any use of this document, the documentation and/or the disk, or the information contained therein for any purposes other than those for which it was disclosed, is strictly forbidden. ALL RIGHTS NOT EXPRESSLY GRANTED ARE RESERVED.

Any representation(s) in the documentation and/or disk concerning performance of EngageOne Connect are for informational purposes only and are not warranties of product performance or otherwise, either express or implied. EngageOne Connect's standard limited warranty, stated in its sales contract or order confirmation form, is the only warranty offered.

The documentation and/or disk is provided "AS IS" and may contain flaws, omissions, or typesetting errors. No warranty is granted nor liability assumed in relation thereto, unless specifically undertaken in EngageOne Connect's sales contract or order confirmation. Information contained in the documentation and in the disk is periodically updated, and changes will be incorporated in subsequent editions. If you have encountered an error, please notify the contacts within. All specifications are subject to change without prior notice.