



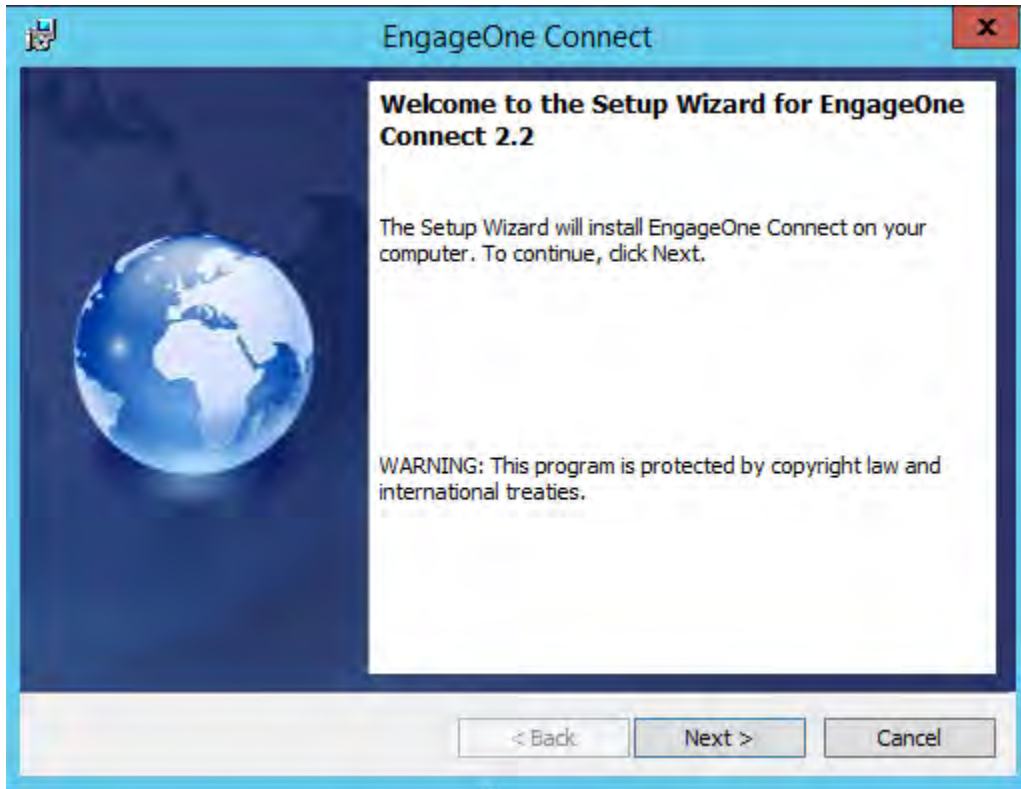
EngageOne Connect 2.2

Installation Guide

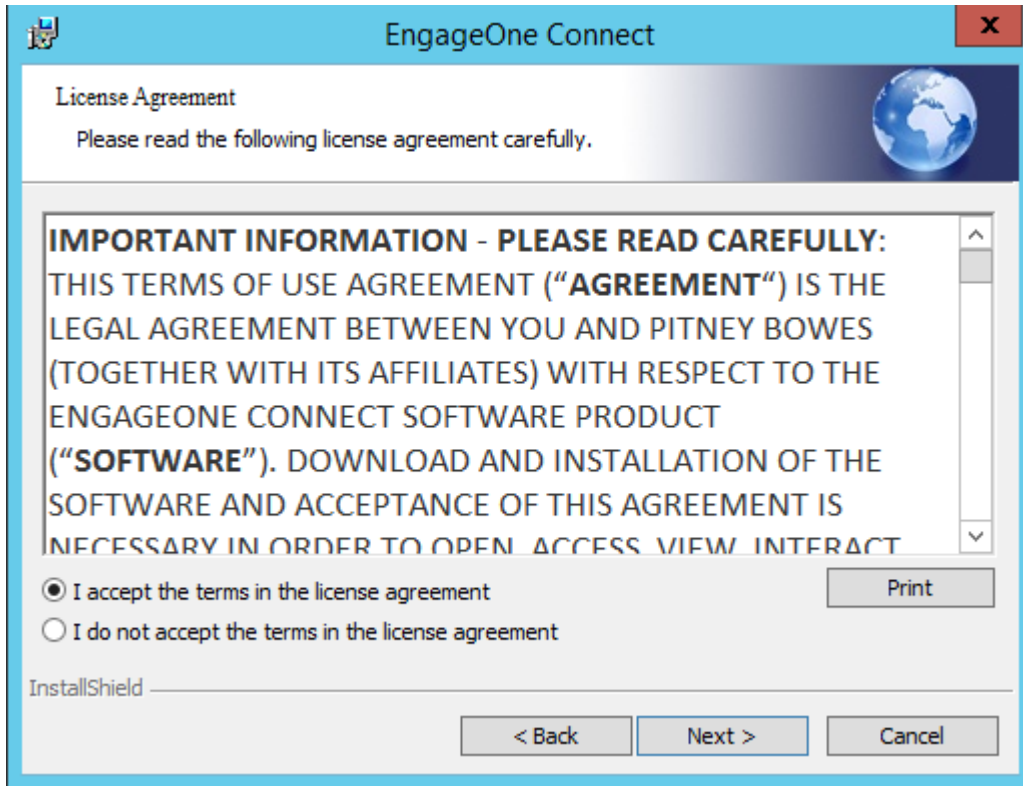
Table of Contents

Welcome screen.....	2
License Agreement.....	3
Destination Folder.....	4
Type of installation.....	5
Database connection.....	6
SQL Credentials window.....	7
Definition of connection details between the front end and the backend installations.....	8
Connection Details for the Backend.....	9
Install the Program.....	10
Installing Connect.....	11
EngageOne Connect Setup Wizard Completed.....	12

Welcome screen

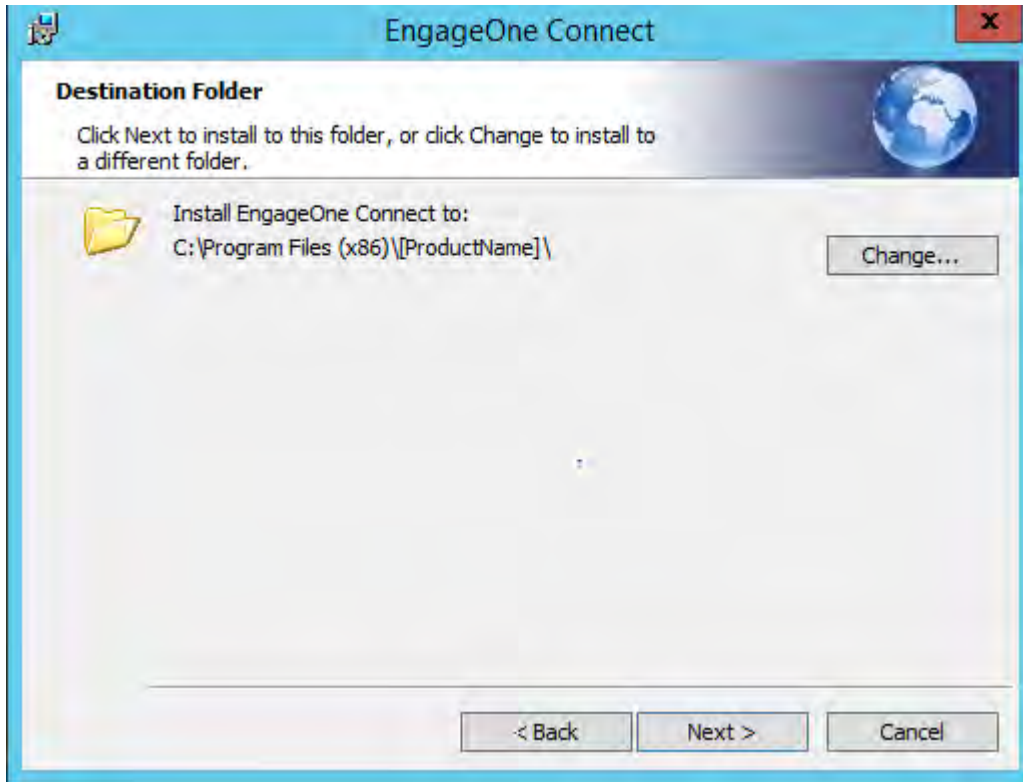


- This screen shows the current version to be installed or to be upgraded to. Clicking the next button will accept your selection and continue with the setup/upgrade.



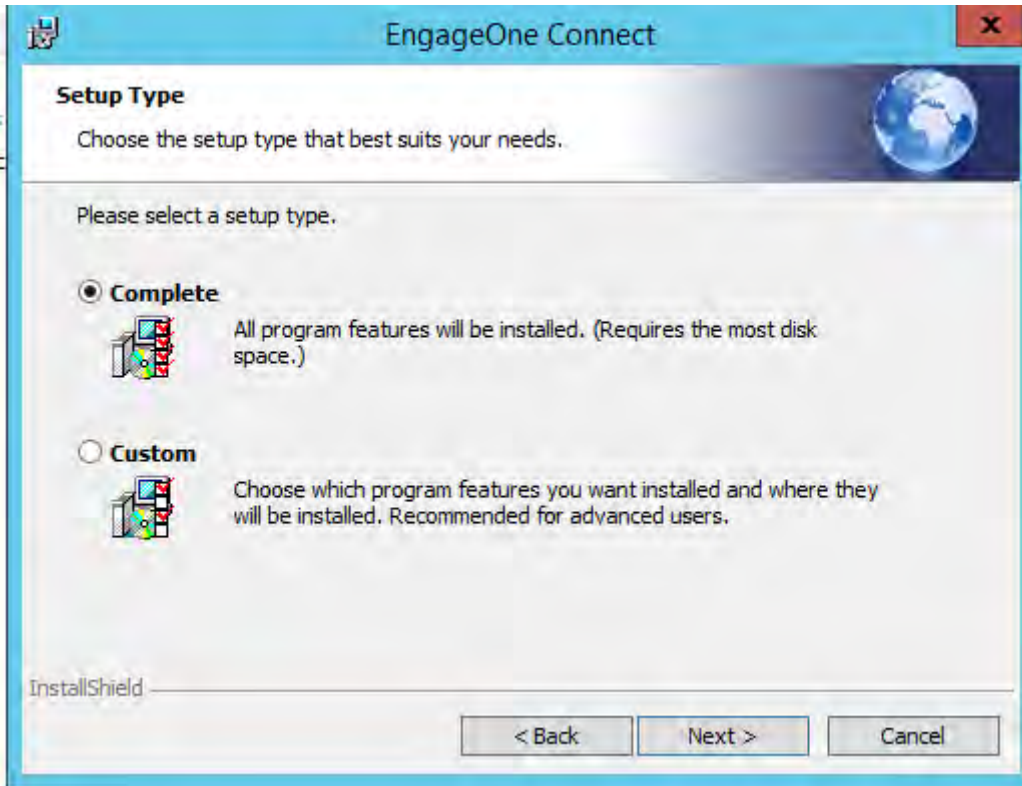
License Agreement

- Please read the license agreement and/or print it in case needed.
- If you do accept it, click on the “I accept the terms in the license agreement” and the next button will become enabled for you to continue the installation.
- You will be able to continue unless the agreement is accepted.



Destination Folder

- Please choose the destination folder, where the installation will be placed.
- If you are requested to install the application on a different location, click on the **Change** button and choose a different location.



Type of installation

- Please choose the type of Installation you are performing
 - **Complete install** – Will include all features of the product, including the frontend components and all backend components
 - **Custom install** – Will enable you to select only the desired components, for example to:
 - Install only the backend components and on another machine the front end components
 - Install only the Frontend component.

Database connection

- **Install Connect Database** – This option will be checked if a database is required to be installed or upgraded.
If an instance already exists and/or there is no need to be upgraded, uncheck this option.
- **Install Using SQL Login Credentials** – This option will be checked, if the installation of the DB instance requires different credentials or an elevated user.
- **Database Name** – Apply a database name
- **Database Server Details** – Here you can define the DB server name or IP.
- **Check password** – Pressing on this button will confirm that there is a match between the two passwords.

Please Enter SQL Login Details With Permissions To CREATE Database

SQL Login Details

Username :

Password :

Re-enter Password :

Check User Credentials

Cancel Done

InstallShield

SQL Credentials window

- **Check User Credentials**
 - Pressing on this button we will confirm that there is a match between the two entered passwords
 - Only after the passwords do match and credentials are validated you will be able to continue with the next screen

EngageOne Connect - InstallShield Wizard

Define The Connection Details Of Your Installation

Please Enter Frontend URL (e.g. www.domain.com)

Frontend URL :

Frontend Port :

Please Enter Backend Fully Qualified Domain Name (FQDN) (e.g. myserver.domain.com)

Backend FQDN Name :

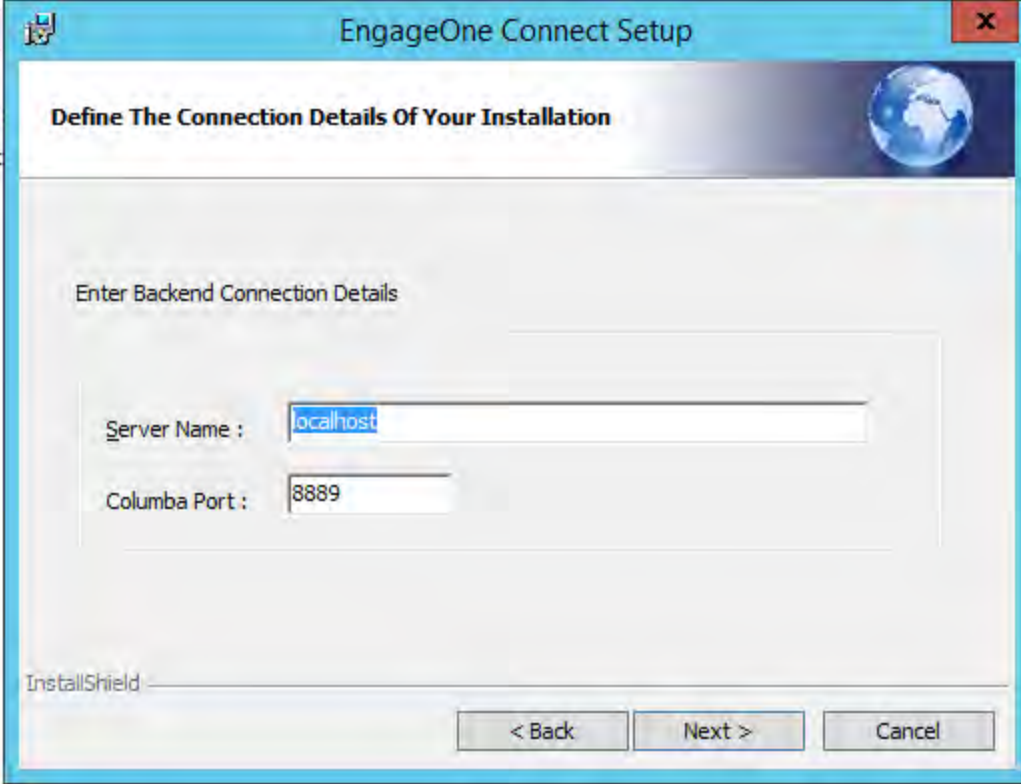
Backend Port :

InstallShield

< Back Next > Cancel

Definition of Connection Details between the front end and the backend installations

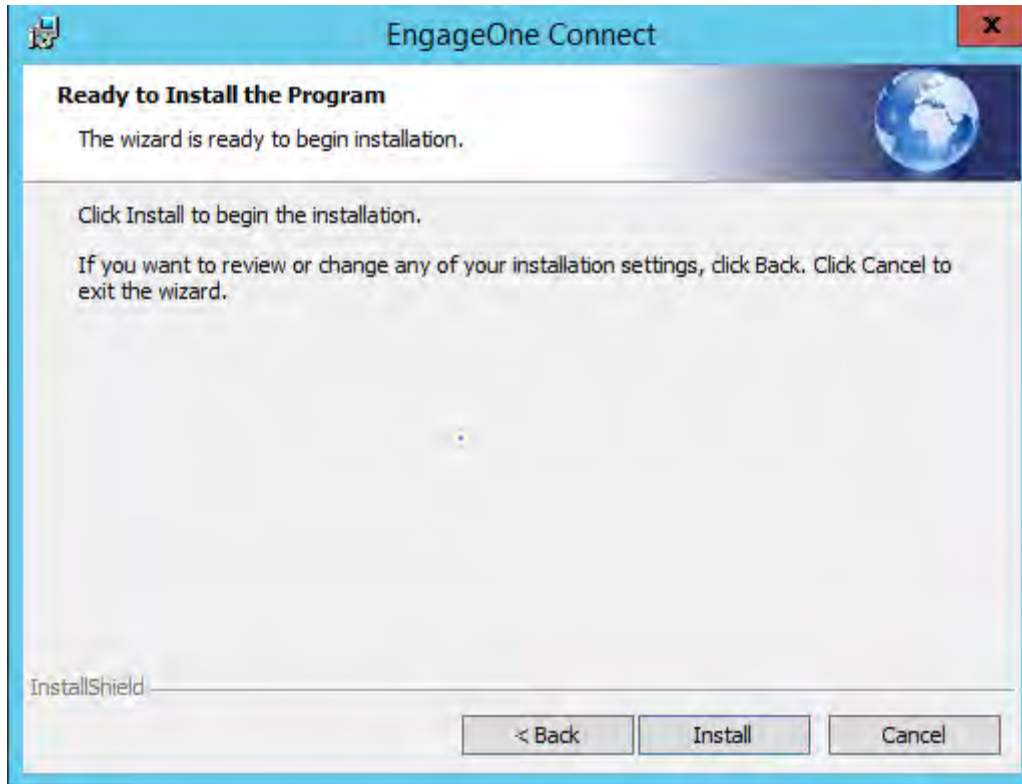
- **FrontEnd URL** – This is the external URL, where all the open notifications, clicks on links within the email and ICP will come through. This URL should be exposed to the outside world and usually is protected by an SSL certificate, thus please be aware that it could contain an HTTPS prefix.
- **FrontEnd Port** – This is the port that the communication between the frontend and the backend goes through. Please make sure that the port is not in use nor blocked.
- **Backend FQDN name** – This is the URL that the frontend will communicate to the backend and should be a published know url to the frontend (e.g. the frontend should be able to access this url through a browser)
- **Backend Port** – This is the port that defines the communication between the internal backend components. Please make sure that this port is not in use or blocked.



The image shows a Windows-style dialog box titled "EngageOne Connect Setup". The main heading is "Define The Connection Details Of Your Installation". Below this, the instruction "Enter Backend Connection Details" is displayed. There are two input fields: "Server Name" with the value "localhost" and "Columba Port" with the value "8889". At the bottom, there are three buttons: "< Back", "Next >", and "Cancel". The "InstallShield" logo is visible in the bottom left corner.

Connection Details for the Backend

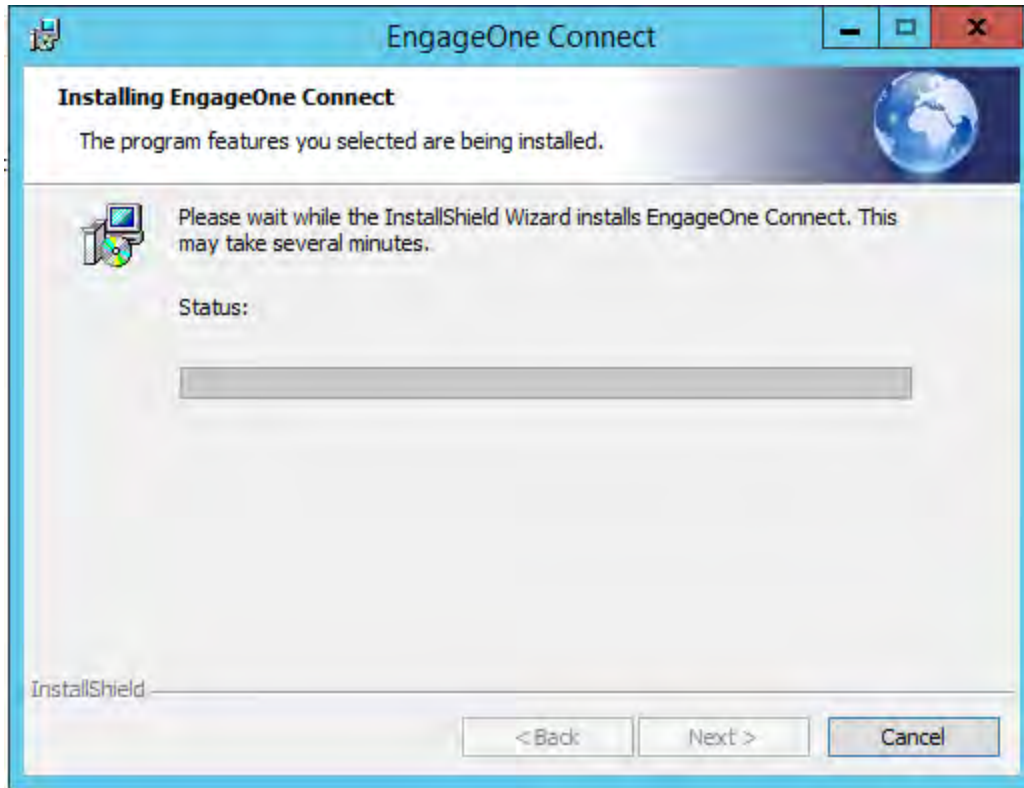
- Here you should define the server name of the backend server and the port that is used to communicate with the frontend server. Please make sure this port is not in use nor taken, and is in match with the port defined in the frontend configuration screen.



Install the Program

After all this installation settings, you will be ready to begin the installation. Click on Install to begin.

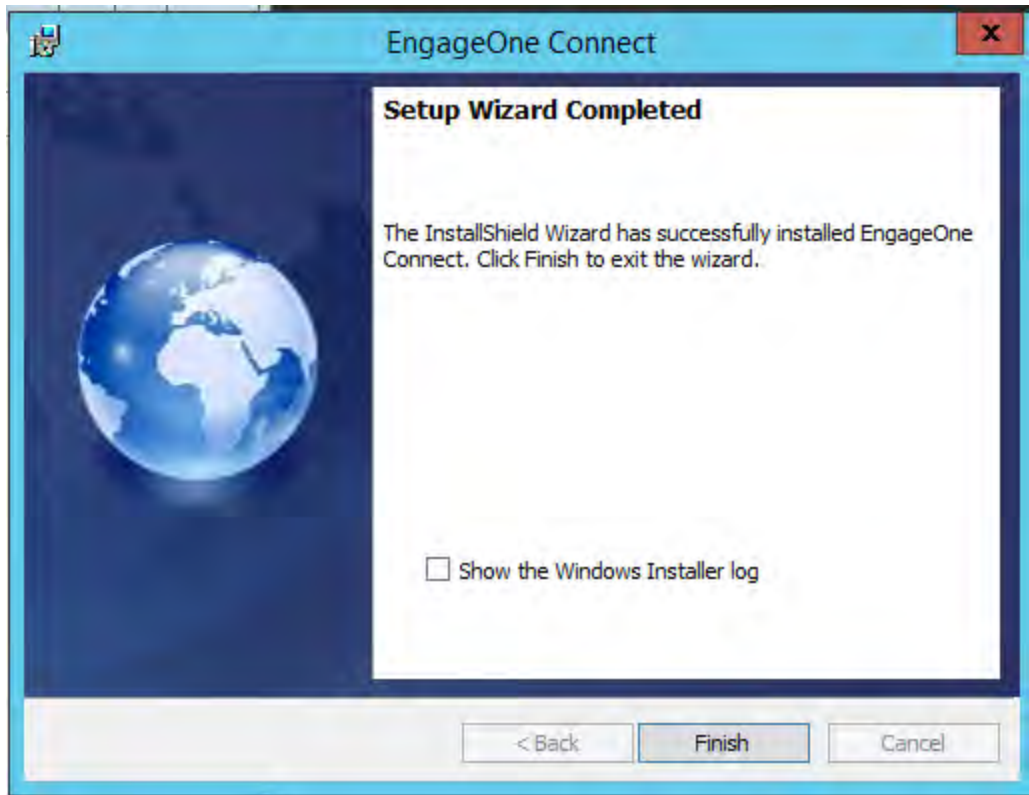
In case the installation setting need to be changed click Back and make your changes.



Installing Connect

This screen shows the Installation Progress.

As needed and should you wish to stop the installation click on **Cancel**.



EngageOne Connect Setup Wizard Completed

This screen shows that the installation was completed successfully without any problems. If you want to see the installer log files, check the **Show the Windows Installer Log** option and then click **Finish**.