



# MailStream Plus™

| Release 8.3.6

# Windows® UI

## Screen Reference

### Contents:

---

Access the MailStream Plus Windows® UI	2
MailStream Plus Dashboard	3
USPS Reference File Load Utility Screen	5
DuoSort Reference File Load Utility Screen	7
CSA Reference File Load Utility Screen	8
License File Load Utility Screen	9
License File Report Information Screen	10

UNITED STATES  
[pitneybowes.com/software](http://pitneybowes.com/software)  
Technical Support: [support.pb.com](mailto:support.pb.com)

CANADA  
[pitneybowes.com/ca](http://pitneybowes.com/ca)  
Technical Support: [support.pb.com](mailto:support.pb.com)

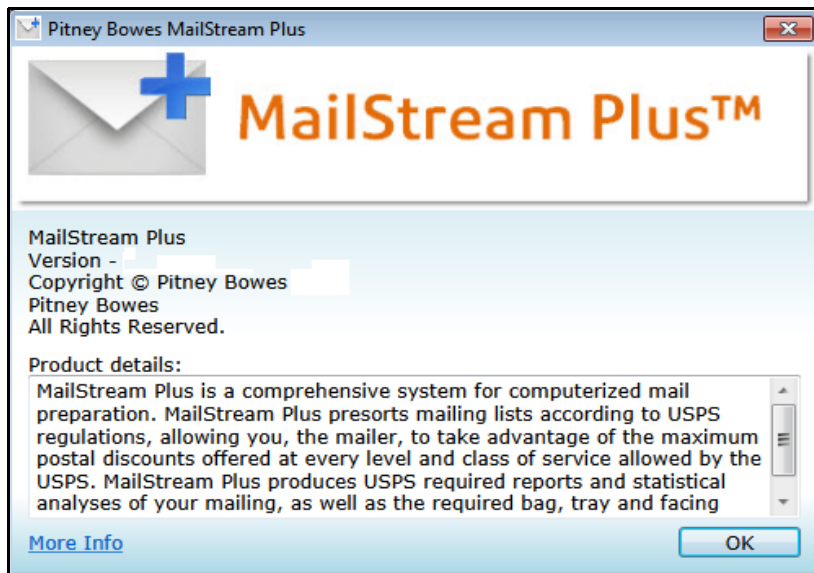
| ©2018 Pitney Bowes, Inc.



## Access the MailStream Plus Windows® UI

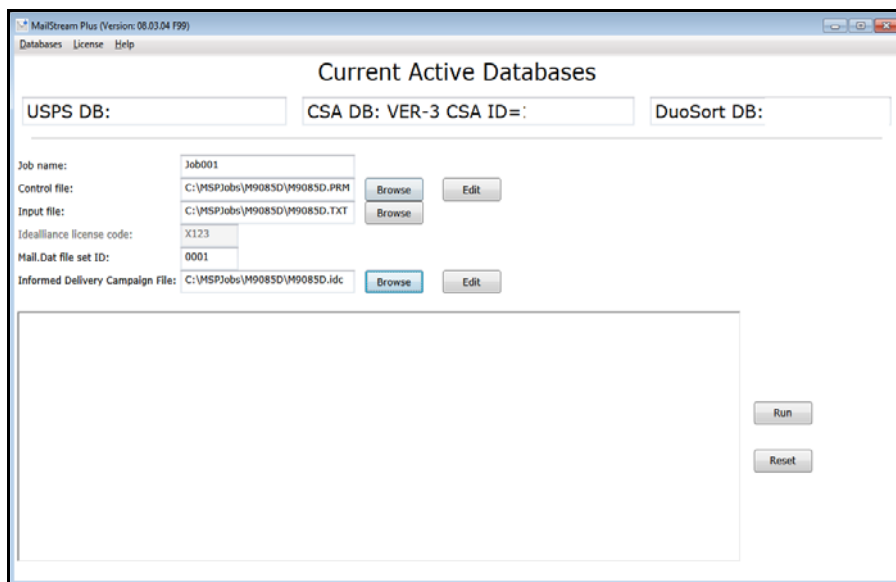
To open the MailStream Plus UI, select **Start > All Programs > Pitney Bowes MailStream Plus > MailStream Plus Interface**.

### Help/About Screen



MailStream Plus displays this information screen when you select **Help/About** from the Dashboard screen's UI menu. It contains information about the current release, and includes a comprehensive product description.

# MailStream Plus Dashboard

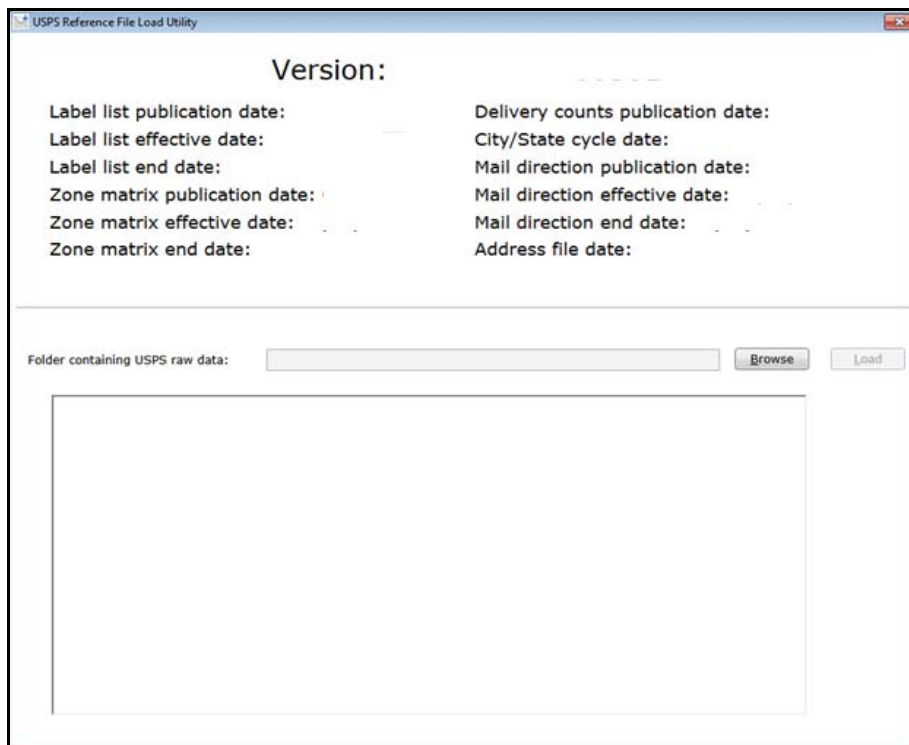


This screen allows you to specify job details, display database status, and run presort jobs. Name the job, define the files to use for processing, and press **Run**.

Field	Function/Purpose
Installed Database Files	Displays the database name and build date for installed databases: USPS, CSA (Customer/Supplier Agreement), DuoSort
Job Name	Enter the name of the job to run.
Control File	Enter the full path and name of the parameter file used for this job.
Control File Browse/Edit	Use these buttons to locate and/or make changes to the control file for this job.
Input File	Enter the full path and name of the input file for this job.
Input file Browse button	Use this button to locate the input file for this job.
Bank File	Enter the full path and name of the bank file for this job. MailStream Plus displays this field only if the selected control file contains the parameter needed to read the bank input file.
Bank File Browse	Use this button to locate the Bank file used for this job. MailStream Plus displays this field only if the selected control file contains the parameter needed to read the Bank input file.
Idealliance license code	Displays the mailer's unique license code as assigned by Idealliance: MailStream Plus displays this field only if the selected control file contains the parameters needed to produce the Mail.dat files.
Mail.dat file set ID	Enter the unique Mail.dat file set ID for this job. MailStream Plus displays this field only if the selected control file contains the parameters needed to produce the Mail.dat files.
Informed Delivery Campaign File	Enter the full path and name of the Informed Delivery Campaign file for this job. MailStream Plus displays this field only if the selected control file contains the parameter needed to generate an Informed Delivery Campaign within the Mail.dat® files.
Informed Delivery Campaign Browse/Edit buttons	Use these buttons to locate and/or make changes to the Informed Delivery Campaign file for this job.

Field	Function/Purpose
Job status display	Shows the progress of a job when you press the <b>Run</b> button
Run/Reset buttons	Select <b>Run</b> to execute a job. Select <b>Reset</b> to clear the Job section and run a new job.

# USPS Reference File Load Utility Screen

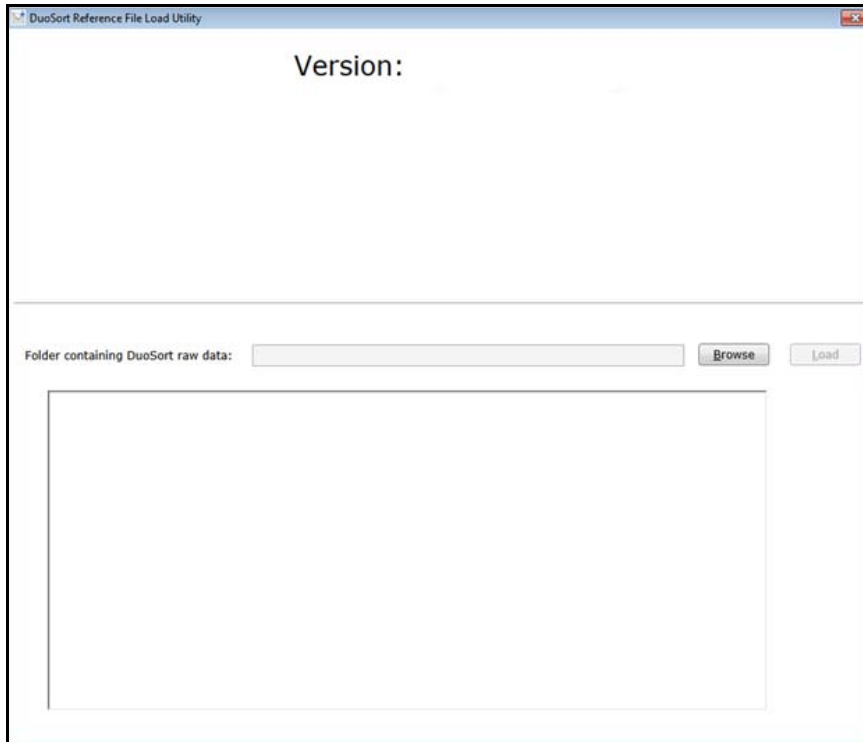


This screen provides details about the USPS database file. From this screen you can also install a new USPS database. To display this screen, select **Databases > USPS** from the main menu.

Field	Function/Purpose
Label list publication date	Displays USPS Publication data of the labeling list used
Label list effective date	Displays date on which labeling list data is effective
Label list end date	Displays date on which labeling list data expires
Zone matrix publication date	Displays USPS publication data of the zone matrix data
Zone matrix effective date	Displays date on which the zone matrix become effective
Zone matrix end date	Displays date on which the zone matrix expires
Delivery counts publication date	Displays the USPS publication date of the delivery statistics file
City/State cycle date	Displays the USPS cycle date for the City/State file
Mail direction publication date	Displays USPS publication date of the mail direction file
Mail direction effective date	Displays date on which mail the direction file becomes effective
Mail direction end date	Displays date on which the mail direction file expires
Address file date	Displays USPS data of the mail direction address file
Folder containing USPS raw data	Displays the folder containing the USPS raw data file to load: Use the <b>Browse</b> button to populate this field.
Job status display	Shows the load progress after you press the <b>Run</b> button

<b>Field</b>	<b>Function/Purpose</b>
Browse button	Locates the folder containing the USPS raw data file to load
Load button	Loads the data for processing

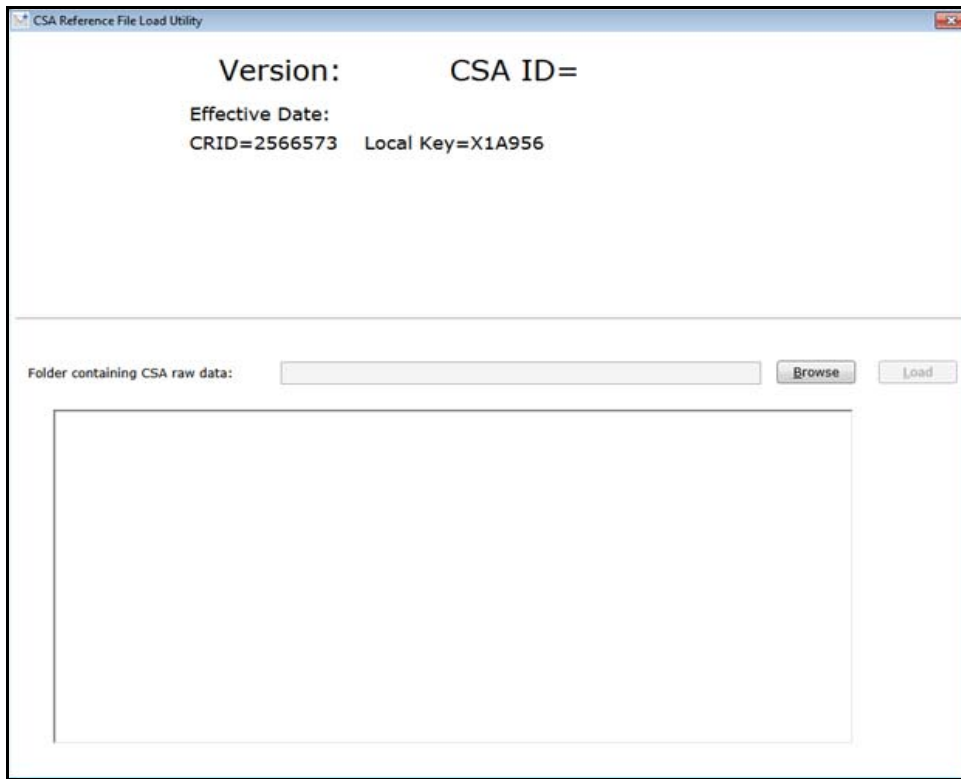
## DuoSort Reference File Load Utility Screen



This screen provides details about the DuoSort database file selected for upload. You can also use this screen to install a new DuoSort Database. To display this screen, select **Databases > DuoSort** from the Main menu.

Field	Function/Purpose
Version	Displays current version for the DuoSort reference file
Folder containing DuoSort raw data	Displays the folder containing the DuoSort raw data file to load: Use the <b>Browse</b> button to populate this field.
Job status display	Shows the progress of the upload when you press the <b>Run</b> button
Browse button	Locates the folder containing the DuoSort raw data file to load
Load button	Loads the data for processing

# CSA Reference File Load Utility Screen

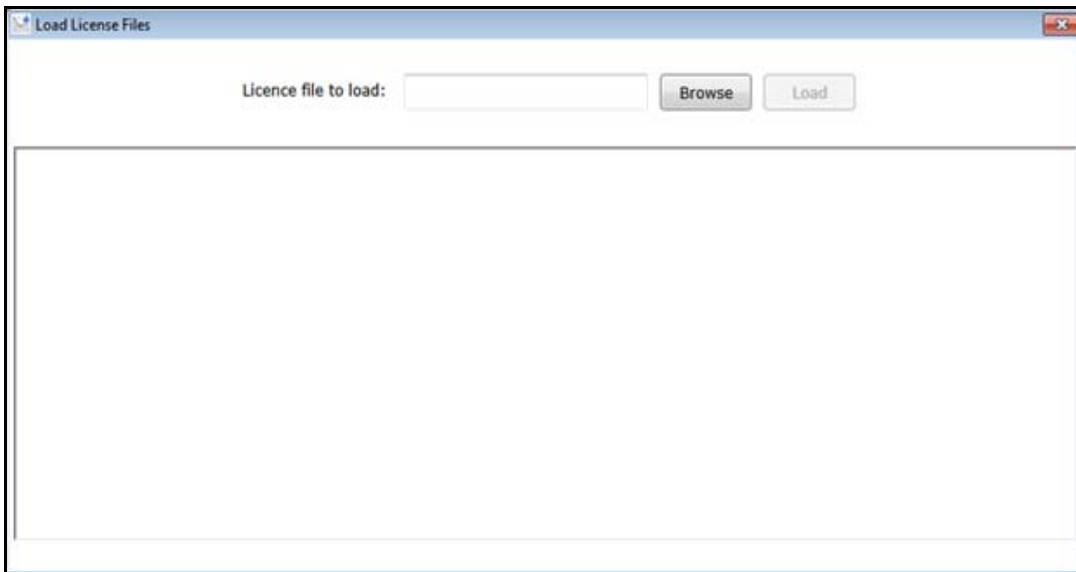


This screen provides details about the Customer/Supplier Agreement (CSA) database file selected for upload. You can also use this screen to install a new CSA database. To display this screen, select **Databases > CSA** from the Main menu.

Field	Function/Purpose
Version	Displays current version for the CSA reference file, including the file effective date, CRID, and unique local access key
Folder containing CSA raw data	Displays the folder containing the CSA raw data file to load: Use the <b>Browse</b> button to populate this field.
Job status display	Shows the progress of the upload when you press the <b>Run</b> button
Browse button	Locates the folder containing the CSA raw data file to load
Load button	Loads the data for processing



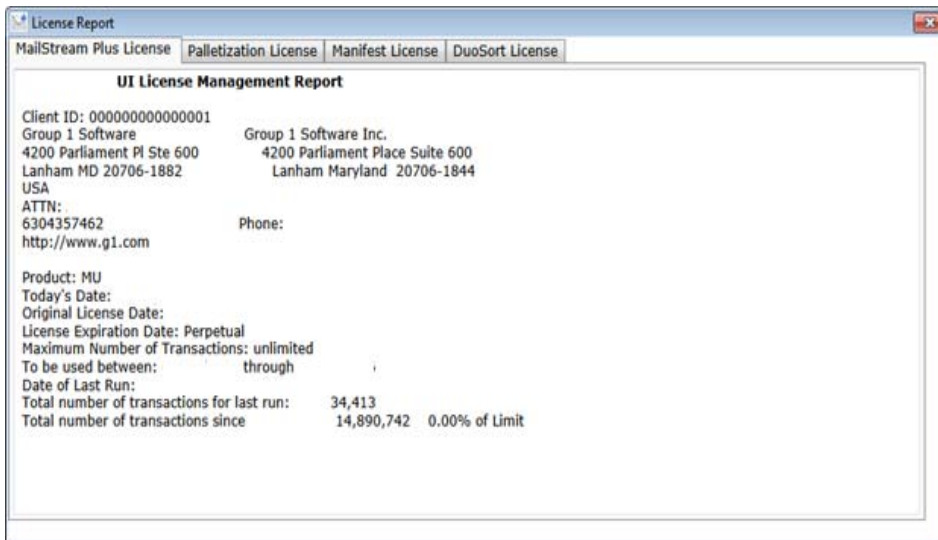
## License File Load Utility Screen



This screen allows you to select and load the MailStream Plus and related add-on utility license files provided by Pitney Bowes. This process loads license files from the source and destination directories you specify. Use **Browse** to locate the file to load, then press **Load**. To display this screen, select **License > Load License** from the Main menu.

Field	Function/Purpose
License file to load	Locates the MailStream Plus product license file
Job status display	Shows file load progress after you press the <b>Load</b> button
Browse button	Locates the folder containing the license file to load
Load button	Loads the license file for MailStream Plus processing

## License File Report Information Screen



This screen allows you to view details for your installed product license files. Click any tab to see details for MailStream Plus and its add-on utilities. These details are generated by Pitney Bowes and are not related to USPS-provided database files. To display this screen, select **License > License Report** from the Main menu.