



Portrait Dialogue

Installing Samples

Release 6.0 SP1

Version 1.0

11 February 2011



Portrait Dialogue Installing Samples Release 6.0 SP1

©2013

Copyright Portrait Software International Limited

All rights reserved. This document may contain confidential and proprietary information belonging to Portrait Software plc and/or its subsidiaries and associated companies.

Portrait Software, the Portrait Software logo, Portrait, Portrait Software's Portrait brand and Million Handshakes are the trademarks of Portrait Software International Limited and may not be used or exploited in any way without the prior express written authorisation of Portrait Software International Limited.

Acknowledgement of trademarks

Other product names, company names, marks, logos and symbols referenced herein may be the trademarks or registered trademarks of their registered owners.

About Portrait Software

Portrait Software is now part of [Pitney Bowes Business Insight \(PBBI\)](#).

Portrait Software enables organizations to engage with each of their customers as individuals, resulting in improved customer profitability, increased retention, reduced risk, and outstanding customer experiences. This is achieved through a suite of innovative, insight-driven applications which empower organizations to create enduring one-to-one relationships with their customers.

Portrait Software was acquired in July 2010 by Pitney Bowes to build on the broad range of capabilities at Pitney Bowes Business Insight for helping organizations acquire, serve and grow their customer relationships more effectively. The Portrait Customer Interaction Suite combines world leading customer analytics, powerful inbound and outbound campaign management, and best-in-class business process integration to deliver real-time customer interactions that communicate precisely the right message through the right channel, at the right time.

Our 300 + customers include industry-leading organizations in customer-intensive sectors. They include 3, AAA, Bank of Tokyo Mitsubishi, Dell, Fiserv Bank Solutions, Lloyds Banking Group, Merrill Lynch, Nationwide Building Society, RACQ, RAC WA, Telenor, Tesco Bank, T-Mobile, Tryg and US Bank.

Pitney Bowes Business Insight (PBBI) is a division of Pitney Bowes Inc. (NYSE: PBI).

For more information please visit: www.portraitsoftware.com or www.pbinsight.com

UK

Portrait Software
The Smith Centre
The Fairmile
Henley-on-Thames
Oxfordshire, RG9 6AB, UK

Email: support@portraitsoftware.com
Tel: +44 (0)1491 416600
Fax: +44 (0)1491 416601

America

Portrait Software
125 Summer Street
16th Floor
Boston, MA 02110
USA

Email: support@portraitsoftware.com
Tel: +1 617 457 5200
Fax: +1 617 457 5299

Norway

Portrait Software
Portrait Million Handshakes AS
Maridalsveien. 87
0461 Oslo
Norway

Email: support@portraitsoftware.com
Tel: +47 22 38 91 00
Fax: +47 23 40 94 99

About this document

An overview of how to install different samples into your Portrait Dialogue solution.

Related documentation

Portrait Dialogue 6.0 SP1 release notes, available on the installation CD.

Software release

Portrait Dialogue 6.0 SP1

Contents

1	General	6
2	EMarketing Master Templates	7
3	EMarketing Questionnaire Styles	8

1 General

To make it easy to start using the EMarketing module we ship a set of free samples. The samples provide you with an excellent starting point to discover the full power of Portrait Dialogue in no time.

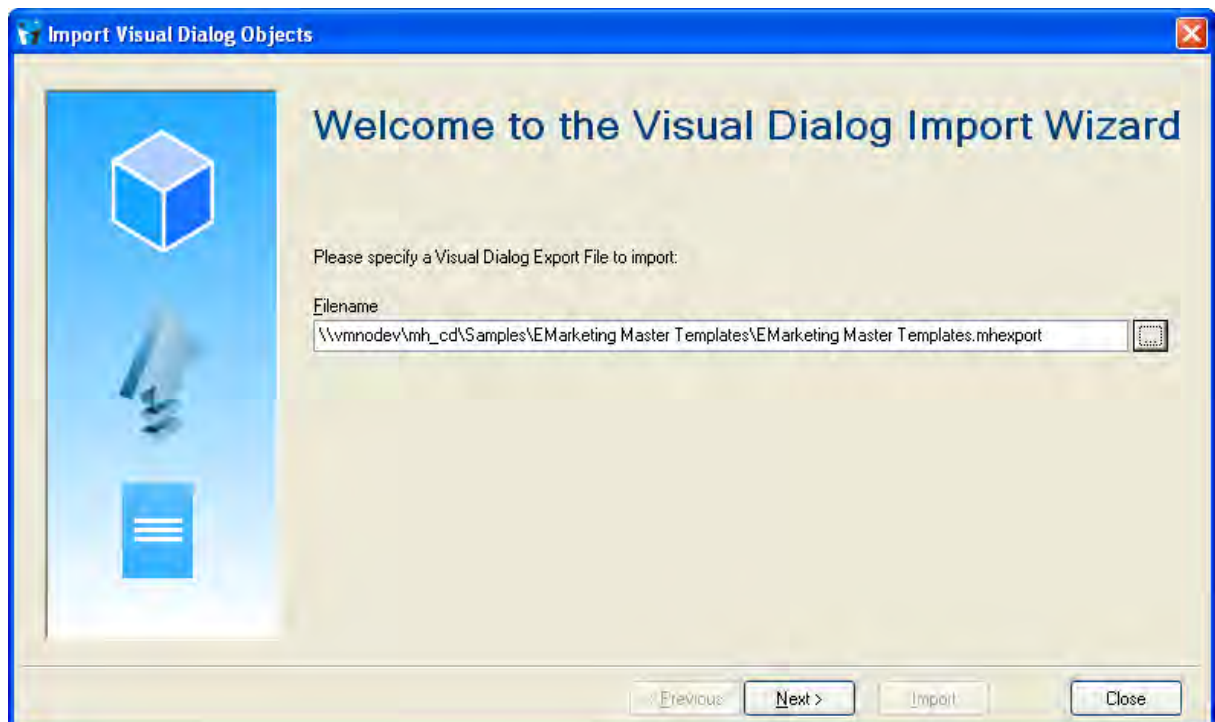
To install the templates follow the simple steps in this document. All samples are located on the installation CD. You will find them under [CD Root]\Samples

2 EMarketing Master Templates

The Master Templates samples are available in the "EMarketing Master Templates" folder.

Use the standard Visual Dialog import tool to import the samples.

1. Select "File" and "Import" on the main menu
2. Select the "EMarketing Master Templates.mhexport" as the file to import.



Note: if you want to import the samples into a specific folder you need to navigate to the folder first and then chose "File" and "Import".

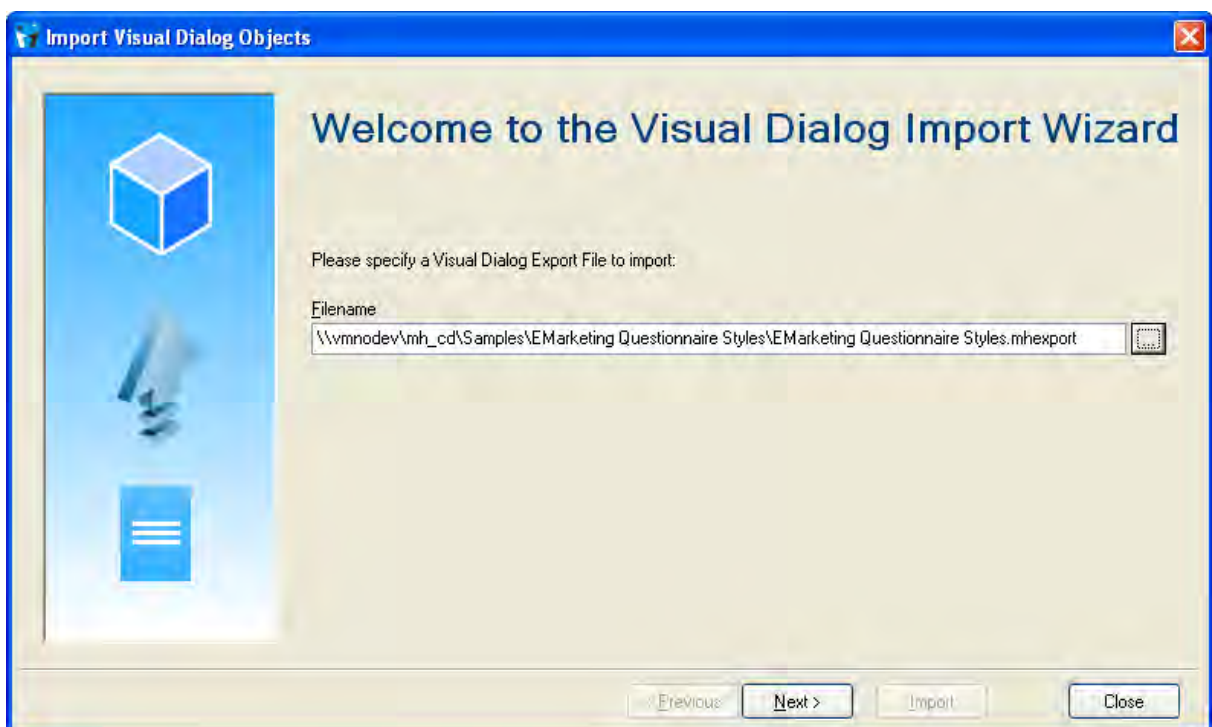
The Master Template samples consist of 6 master templates and images (public files) used by the templates.

3 EMarketing Questionnaire Styles

The Questionnaire Styles samples are available in the "EMarketing Questionnaire Styles.mhexport" folder.

Use the standard Visual Dialog import tool to import the samples.

1. Select "File" and "Import" on the main menu
2. Select the "EMarketing Questionnaire Styles.mhexport" as the file to import.



Note: if you want to import the samples into a specific folder you need to navigate to the folder first and then chose "File" and "Import".

