

Portrait Dialogue



Installing Samples



Release 6.1

© 2015 Pitney Bowes Software Inc. All rights reserved.

This document may contain confidential and proprietary information belonging to Pitney Bowes Inc. and/or its subsidiaries and associated companies.

Portrait Software, the Portrait Software logo, Portrait, and Portrait Software's Portrait brand are the trademarks of Portrait Software International Limited and may not be used or exploited in any way without the prior express written authorization of Portrait Software International Limited.

Acknowledgement of trademarks

Other product names, company names, marks, logos and symbols referenced herein may be the trademarks or registered trademarks of their registered owners.

Portrait Software Support

If you need help with something that's not covered by this documentation, try the Knowledge Base on our web site: <http://support.portraitsoftware.com> and follow the links to your product.

You can also download other Portrait Software documentation from the site. If you don't have a username and password—or you've forgotten them—please contact us through one of the channels below.

If you find a problem with the use, installation, or documentation of this product, please contact us using any of the following methods:

Email: software.support@pb.com

Phone

- USA/Canada 1-800-335-3860 (toll-free)
- Rest of world +44 800 840 0001

When you report a problem, it helps if you can tell us:

- The name of the software application
- The circumstances in which the problem arose
- What error messages you saw (if any);
- The version of the software that you were using.

Pitney Bowes Software Inc.

January 9, 2015

Contents

Introduction	4
Related documents.....	4
Software release.....	4
General	5
EMarketing Master Templates	6
EMarketing Questionnaire Styles	7

Introduction

An overview of how to install different samples into your Portrait Dialogue solution.

Related documents

[Portrait Dialogue 6.1 release notes](#)

Software release

[Portrait Dialogue 6.1](#)

General

To make it easy to start using the EMarketing module we ship a set of free samples. The samples provide you with an excellent starting point to discover the full power of Portrait Dialogue in no time.

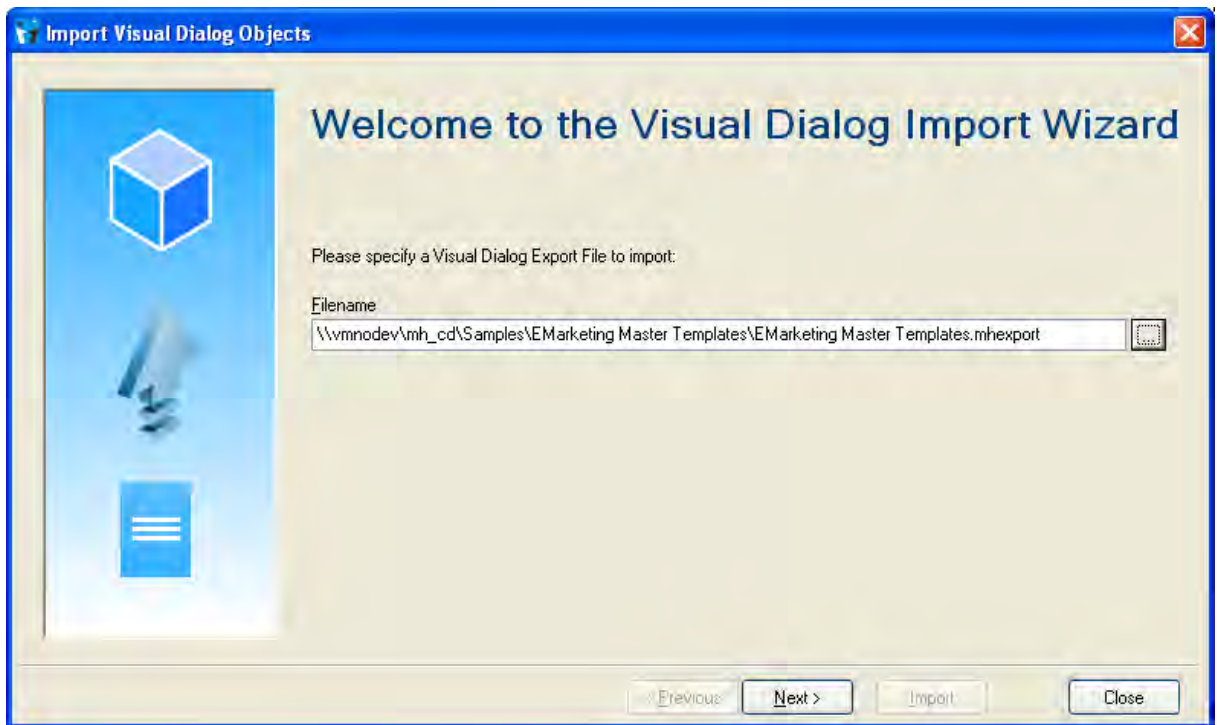
To install the templates follow the simple steps in this document. All samples are located on the installation CD. You will find them under <CD Root>\Samples

EMarketing Master Templates

The Master Templates samples are available in the "EMarketing Master Templates" folder.

Use the standard Visual Dialog import tool to import the samples.

1. Select "File" and "Import" on the main menu
2. Select the "EMarketing Master Templates.mhexport" as the file to import.



Note: if you want to import the samples into a specific folder you need to navigate to the folder first and then chose "File" and "Import".

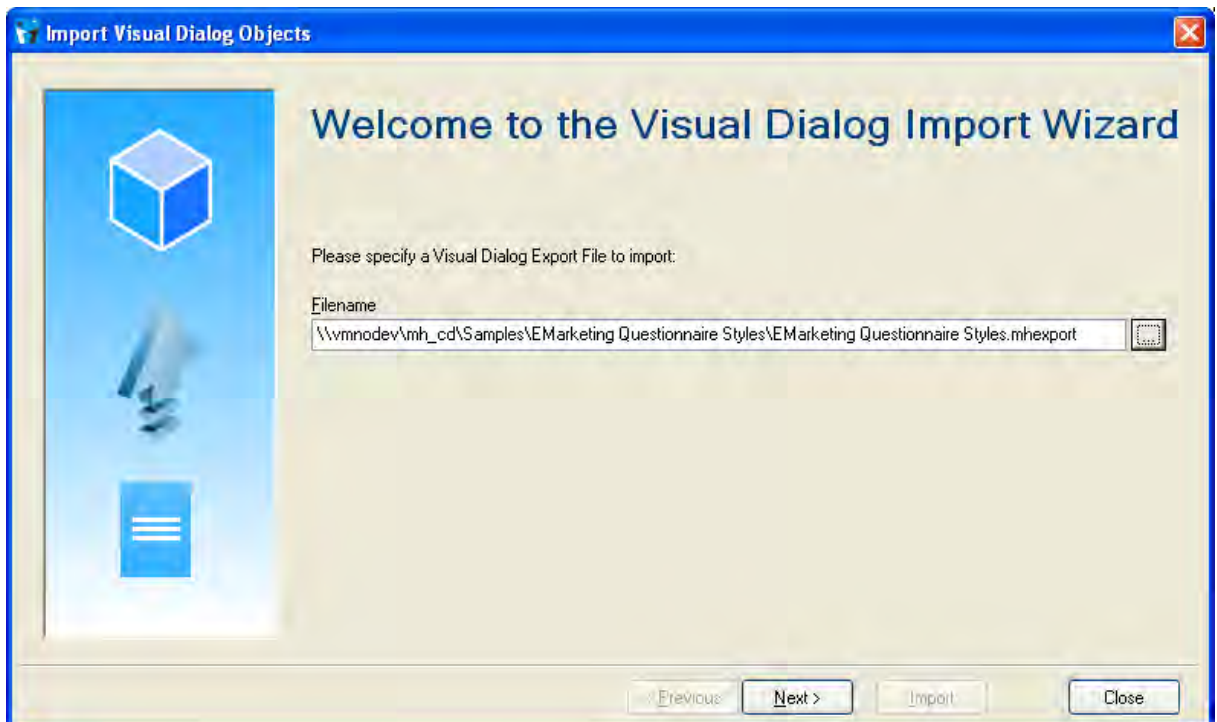
The Master Template samples consist of 6 master templates and images (public files) used by the templates.

EMarketing Questionnaire Styles

The Questionnaire Styles samples are available in the "EMarketing Questionnaire Styles.mhexport" folder.

Use the standard Visual Dialog import tool to import the samples.

1. Select "File" and "Import" on the main menu
2. Select the "EMarketing Questionnaire Styles.mhexport" as the file to import.



Note: if you want to import the samples into a specific folder you need to navigate to the folder first and then chose "File" and "Import".

