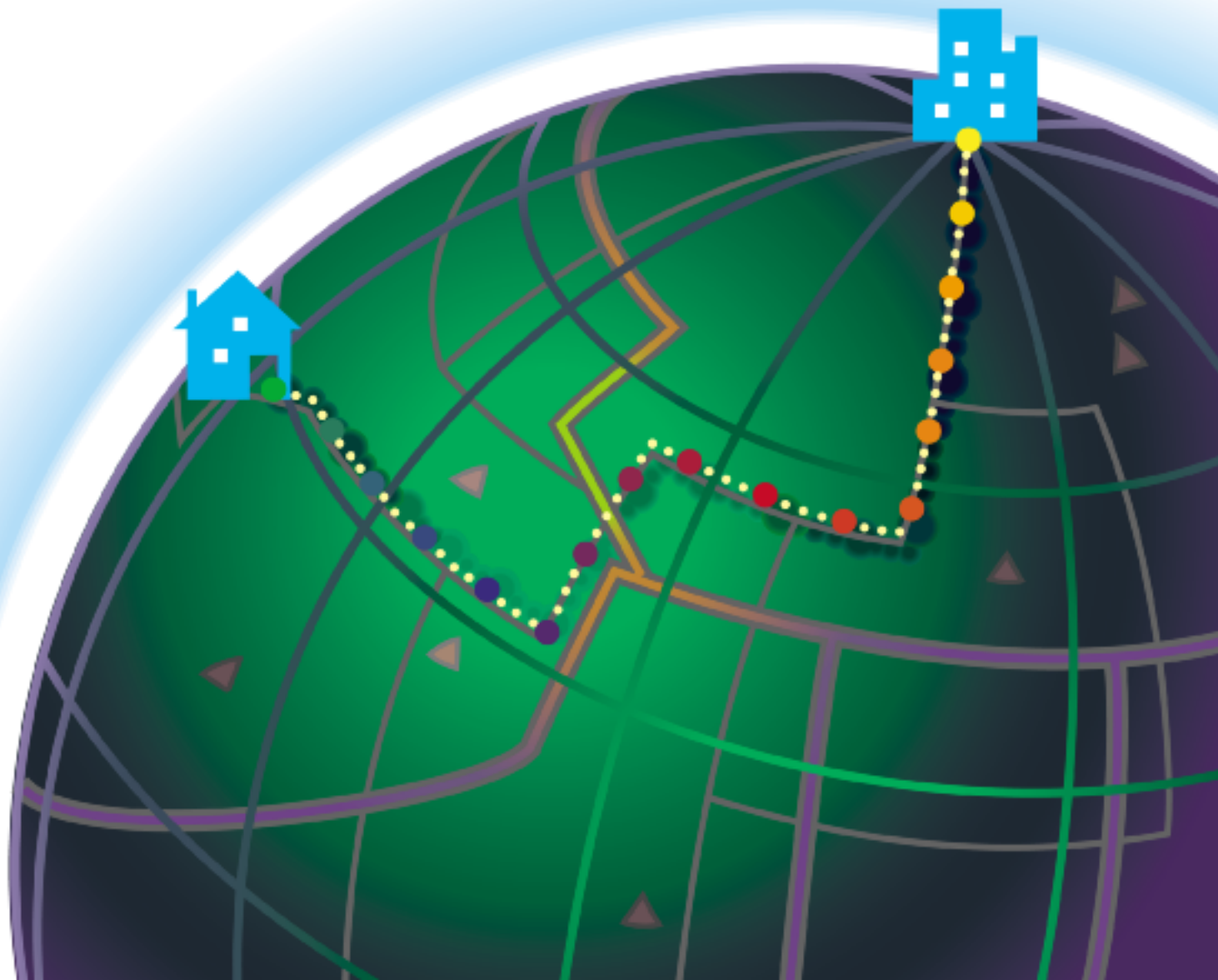


MapInfo[®] *Routing J Server*



MapInfo Routing J Server

Canadian Data Information



Information in this document is subject to change without notice and does not represent a commitment on the part of MapInfo or its representatives. No part of this document may be reproduced or transmitted in any form or by any means, electronic or mechanical, including photocopying, without the written permission of MapInfo Corporation, One Global View, Troy, New York 12180-8399.

©2002 MapInfo Corporation. All rights reserved.

Portions copyright ©2001 OPCOM Pty Limited. All rights reserved.

©2002 Geographic Data Technology, Inc. All rights reserved. This product contains proprietary and confidential property of Geographic Data Technology, Inc. Unauthorized use, including copying for other than testing and standard backup procedures, of this product is expressly prohibited.

Java and all Java-based trademarks and logos are trademarks or registered trademarks of Sun Microsystems, Inc. in the United States and other countries.

MapInfo, MapInfo Professional, MapBasic, MapMarker, and the MapInfo "Rainbow" Logo are trademarks of MapInfo Corporation. Products named herein may be trademarks of their respective manufacturers and are hereby recognized. Trademarked names are used editorially, to the benefit of the trademark owner, with no intent to infringe on the trademark. MapInfo welcomes your comments and suggestions

Contact MapInfo Corporation on the Internet at: <http://www.mapinfo.com>.

MapInfo Corporate Headquarters:

Voice: (518) 285-6000

Fax: (518) 285-6060

Sales Info Hotline: (800) 327-8627

Federal Sales: (800) 619-2333

Technical Support Hotline: (518) 285-7283

Technical Support Fax: (518) 285-6080

MapInfo Canada:

Voice: (416) 348-9180

Fax: (416) 348-9195

Toll-free telephone support is available in the U.S. and Canada. Contact your MapInfo sales representative for details. For international customers, please use the Technical Support Fax number.

**MapInfo Routing J Server 2.5
October 2002**

Canadian Routing Data Contents

Data Source and Vintage

The MapInfo Routing J Server 2.5 is based on data from Geographic Data Technology (GDT) Dynamap/Transportation Canada version 6.2. The MapInfo Routing J Server 2.5 is compatible with StreetPro Canada 5.2 and MapMarker Canada 5.1.

Routing Data File Size

This table contains the size of each file for routing data (organized by province).

File	Province	Size in bytes
abmaj.omf	Alberta	7,032,678
abmaj.ond	Alberta	281,559
abmin.omf	Alberta	17,422,169
abmin.ond	Alberta	429,436
bcmaj.omf	British Columbia	4,130,314
bcmaj.ond	British Columbia	94,005
bcmin.omf	British Columbia	22,633,178
bcmin.ond	British Columbia	303,493
mbmaj.omf	Manitoba	4,219,685
mbmaj.ond	Manitoba	141,432
mbmin.omf	Manitoba	8,575,584
mbmin.ond	Manitoba	216,324
nbmaj.omf	New Brunswick	2,894,194
nbmaj.ond	New Brunswick	56,604
nbmin.omf	New Brunswick	5,222,845
nbmin.ond	New Brunswick	75,176
nfmaj.omf	Newfoundland	1,855,072
nfmaj.ond	Newfoundland	46,565
nfmin.omf	Newfoundland	3,865,416
nfmin.ond	Newfoundland	68,030
nsmaj.omf	Nova Scotia	3,760,309
nsmaj.ond	Nova Scotia	67,448
nsmmin.omf	Nova Scotia	6,717,371
nsmmin.ond	Nova Scotia	89,210

Canadian Routing Data Contents

File	Province	Size in bytes
ntmaj.omf	Northwest Territory	82,620
ntmaj.ond	Northwest Territory	15,786
ntmin.omf	Northwest Territory	226,126
ntmin.ond	Northwest Territory	18,346
numin.omf	Nunavut	15,960
numin.ond	Nunavut	561
onmaj.omf	Ontario	16,927,642
onmaj.ond	Ontario	377,221
onmin.omf	Ontario	41,965,959
onmin.ond	Ontario	562,256
pemaj.omf	Prince Edward Island	424,327
pemaj.ond	Prince Edward Island	10,368
pemin.omf	Prince Edward Island	783,501
pemin.ond	Prince Edward Island	15,702
qcmaj.omf	Quebec	14,089,277
qcmaj.ond	Quebec	248,909
qcmin.omf	Quebec	36,423,519
qcmin.ond	Quebec	436,654
skmaj.omf	Saskatchewan	6,691,379
skmaj.ond	Saskatchewan	283,386
skmin.omf	Saskatchewan	13,095,186
skmin.ond	Saskatchewan	379,344
ytmaj.omf	Yukon	200,769
ytmaj.ond	Yukon	30,001
ytmin.omf	Yukon	402,867
ytmin.ond	Yukon	34,517
Canada	Yukon	422,730,117