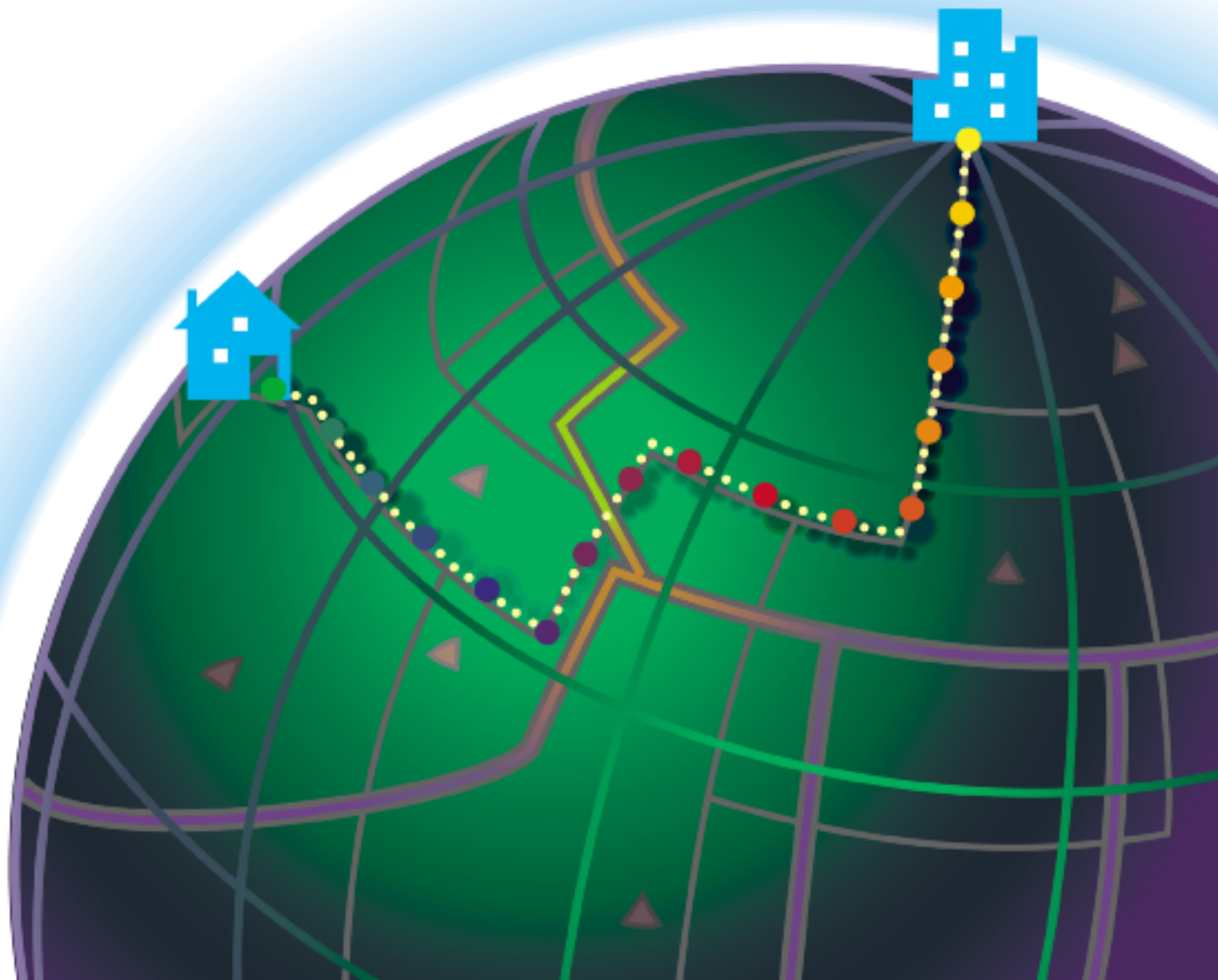


# MapInfo<sup>®</sup> *Routing J Server*



# MapInfo Routing J Server

*United States Data Information*



Information in this document is subject to change without notice and does not represent a commitment on the part of MapInfo or its representatives. No part of this document may be reproduced or transmitted in any form or by any means, electronic or mechanical, including photocopying, without the written permission of MapInfo Corporation, One Global View, Troy, New York 12180-8399.

©2002 MapInfo Corporation. All rights reserved.

Portions copyright ©2002 OPCOM Pty Limited. All rights reserved.

©2002 Geographic Data Technology, Inc. All rights reserved. This product contains proprietary and confidential property of Geographic Data Technology, Inc. Unauthorized use, including copying for other than testing and standard backup procedures, of this product is expressly prohibited.

©2002 Tele Atlas N.V.'s-Hertogenbosch. All rights reserved.

Java and all Java-based trademarks and logos are trademarks or registered trademarks of Sun Microsystems, Inc. in the United States and other countries.

MapInfo, MapInfo Professional, MapBasic, MapMarker, and the MapInfo "Rainbow" Logo are trademarks of MapInfo Corporation. Products named herein may be trademarks of their respective manufacturers and are hereby recognized. Trademarked names are used editorially, to the benefit of the trademark owner, with no intent to infringe on the trademark. MapInfo welcomes your comments and suggestions

Contact MapInfo Corporation on the Internet at: <http://www.mapinfo.com>.

**MapInfo Corporate Headquarters:**

Voice: (518) 285-6000

Fax: (518) 285-6060

Sales Info Hotline: (800) 327-8627

Federal Sales: (800) 619-2333

Technical Support Hotline: (518) 285-7283

Technical Support Fax: (518) 285-6080

**MapInfo Europe Headquarters:**

Voice: +44 (0)1753 848 200

Fax: +44 (0)1753 621 140

email: [uk@mapinfo.com](mailto:uk@mapinfo.com)

**Germany:**

Voice: +49 (0)6142-203-400

Fax: +49 (0)6142-203-444

email: [germany@mapinfo.com](mailto:germany@mapinfo.com)

Toll-free telephone support is available in the U.S. and Canada. Contact your MapInfo sales representative for details. For international customers, please use the Technical Support Fax number.

This documentation reflects the contributions of almost all of the women and men who work for MapInfo Corporation. It was specifically produced by Larry Strianese. Colleen Cox, Editor. Juliette Funciello-Vunk, Editor. These members of the Documentation Department are indebted to MapInfo's Quality Assurance Department and, of course, to all the members of the Product Development team that engineered this project.

**MapInfo Routing J Server 2.5  
August 2002**

# U.S. Routing Data Contents

## Data Source and Vintage

The MapInfo Routing J Server 2.5 is based on data from Geographic Data Technology (GDT) Dynamap/Transportation version 4.1(April 2002).

The new data contains a limited Canadian network from the North American Transportation Database (NORTAD 1998), U.S. Dept. of Transportation. This network allows you to take logical paths across Canada when it makes sense (e.g. Alaska to Seattle, Buffalo to Detroit, etc.).

## Routing Data File Size

This table contains the layout of states on CD-ROMs and the size of each file for street-level data.

State	State Name	Region	Size (MB)
IA	Iowa	MidWest	52
IL	Illinois	MidWest	119
IN	Indiana	MidWest	74
KY	Kentucky	MidWest	68
MI	Michigan	MidWest	102
OH	Ohio	MidWest	103
WI	Wisconsin	MidWest	74
CO	Colorado	Mountain	82
ID	Idaho	Mountain	51
MN	Minnesota	Mountain	79
MT	Montana	Mountain	73
ND	North Dakota	Mountain	36
NE	Nebraska	Mountain	51
NM	New Mexico	Mountain	79
SD	South Dakota	Mountain	36
UT	Utah	Mountain	44
WY	Wyoming	Mountain	54
CT	Connecticut	Northeast	24
DC	District of Columbia	Northeast	1
DE	Delaware	Northeast	6

## U.S. Routing Data Contents

---

<b>State</b>	<b>State Name</b>	<b>Region</b>	<b>Size (MB)</b>
MA	Massachusetts	Northeast	56
MD	Maryland	Northeast	43
ME	Maine	Northeast	18
NH	New Hampshire	Northeast	20
NJ	New Jersey	Northeast	59
NY	New York	Northeast	108
PA	Pennsylvania	Northeast	139
RI	Rhode Island	Northeast	10
VA	Virginia	Northeast	86
VT	Vermont	Northeast	13
WV	West Virginia	Northeast	37
AK	Alaska	Pacific	11
AZ	Arizona	Pacific	85
CA	California	Pacific	271
HI	Hawaii	Pacific	7
NV	Nevada	Pacific	47
OR	Oregon	Pacific	96
WA	Washington	Pacific	97
FL	Florida	South	176
GA	Georgia	South	109
NC	North Carolina	South	121
SC	South Carolina	South	83
AL	Alabama	SouthCentral	74
LA	Louisiana	SouthCentral	56
MS	Mississippi	SouthCentral	53
TN	Tennessee	SouthCentral	82
TX	Texas	SouthCentral	349
AR	Arkansas	US & Hwy CD	66
KS	Kansas	US & Hwy CD	68
MO	Missouri	US & Hwy CD	101
OK	Oklahoma	US & Hwy CD	74

## Highway and US CD Contents

This table describes additional highway and US file content that is found on the Mountain CD.

Entity	Name	Size in MB
MidWest Highways	mwsthwy.*	58
NorthEast Highways	nesthwy.*	50
South Highways	southwy.*	51
Central Highways	ctrlhwy.*	49
Pacific Highways	pacfhwy.*	33
Canadian Highway	canhwy.*	2
US Files	usmaps.st	27

## Highway File Distribution

This table contains information on what states are contained in each highway file.

State Abbreviation	State Name	Highway File
AZ	Arizona	Central
CO	Colorado	Central
ID	Idaho	Central
KS	Kansas	Central
MT	Montana	Central
NE	Nebraska	Central
NM	New Mexico	Central
ND	North Dakota	Central
OK	Oklahoma	Central
SD	South Dakota	Central
TX	Texas	Central
UT	Utah	Central
WY	Wyoming	Central
IL	Illinois	Midwest
IN	Indiana	Midwest
IA	Iowa	Midwest
KY	Kentucky	Midwest
MI	Michigan	Midwest

## U.S. Routing Data Contents

---

<b>State Abbreviation</b>	<b>State Name</b>	<b>Highway File</b>
MN	Minnesota	Midwest
MO	Missouri	Midwest
OH	Ohio	Midwest
WI	Wisconsin	Midwest
CT	Connecticut	Northeast
DE	Delaware	Northeast
DC	District of Columbia	Northeast
ME	Maine	Northeast
MD	Maryland	Northeast
MA	Massachusetts	Northeast
NH	New Hampshire	Northeast
NJ	New Jersey	Northeast
NY	New York	Northeast
PA	Pennsylvania	Northeast
RI	Rhode Island	Northeast
VT	Vermont	Northeast
VA	Virginia	Northeast
WV	West Virginia	Northeast
AK	Alaska	Pacific
CA	California	Pacific
HI	Hawaii	Pacific
NV	Nevada	Pacific
OR	Oregon	Pacific
WA	Washington	Pacific
AL	Alabama	South
AR	Arkansas	South
FL	Florida	South
GA	Georgia	South
LA	Louisiana	South
MS	Mississippi	South
NC	North Carolina	South
SC	South Carolina	South
TN	Tennessee	South